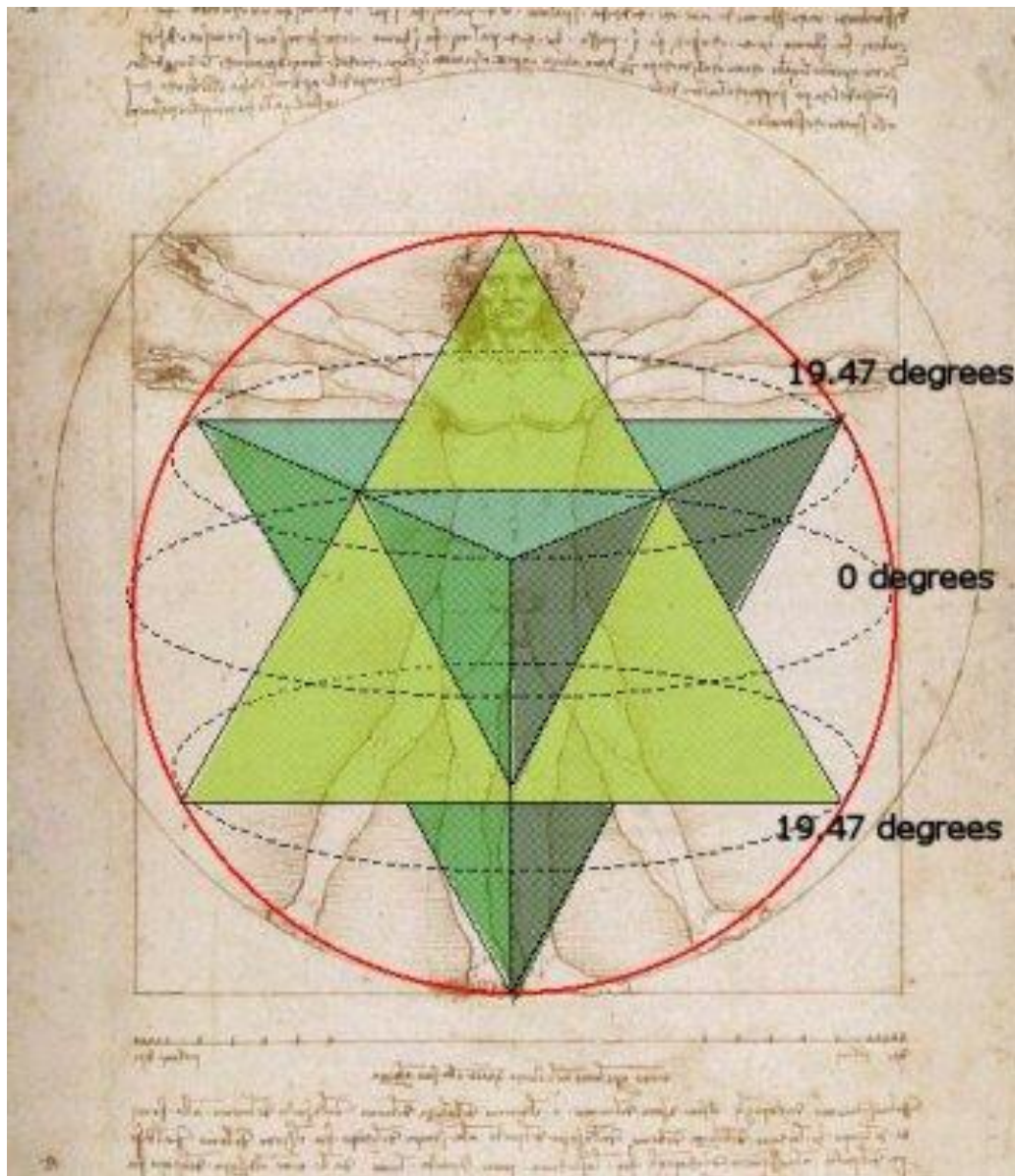
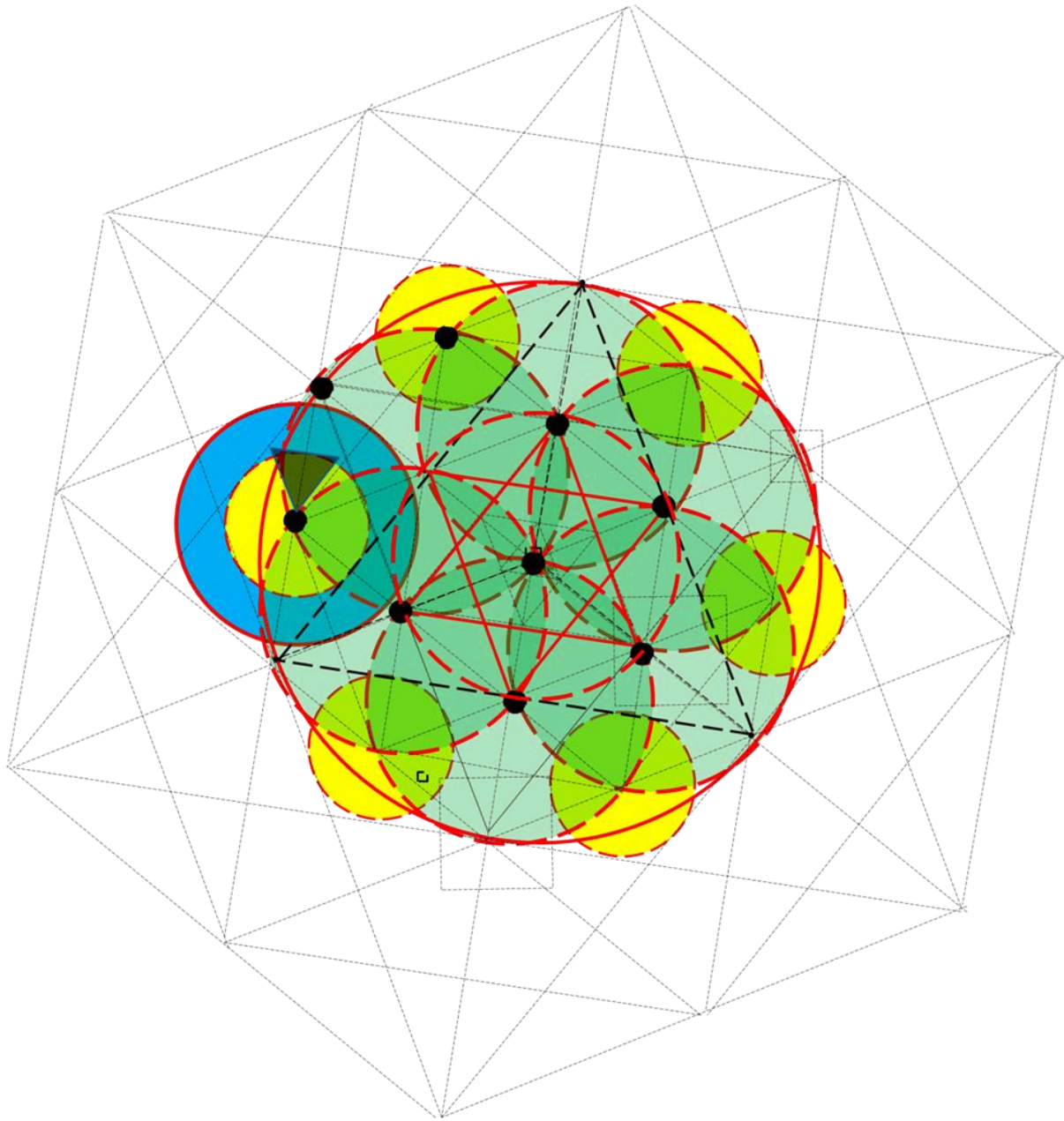


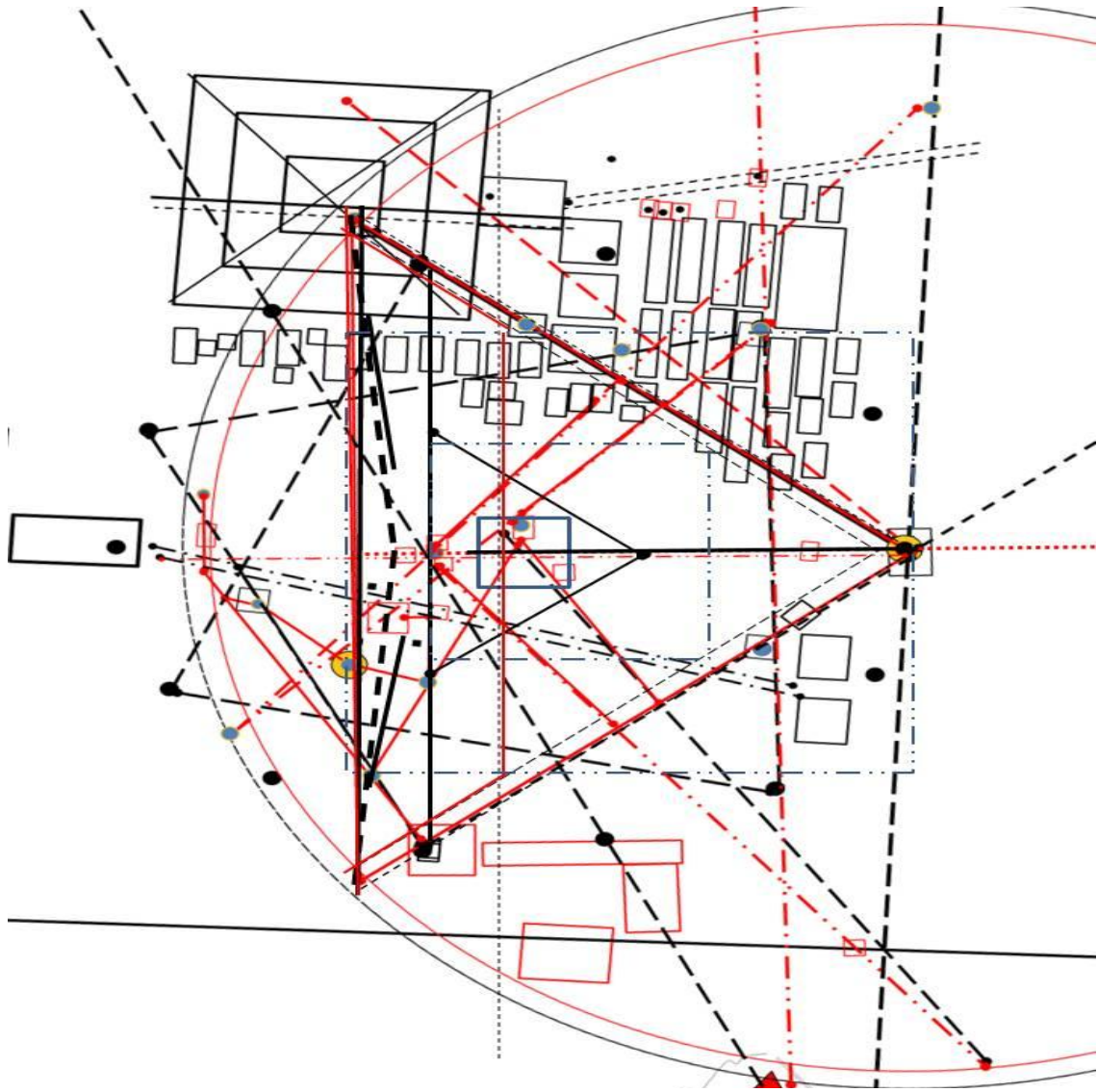
'Sacred Mathematics'

Geometries that help define how tombs and structures were placed on the ground at the Giza Plateau, Egypt.





SECRETS OF CUBING OF THE SPHERE



1.....SACRED MATHEMATICS

**2.....SECRETS OF CUBING OF THE
SPHERE
LOGO OF THE CUBED SPHERE**

3-4.....INDEX

5-6.....PREFACE

**7-14....MATHEMATICAL RELATIONSHIPS AT
THE GIZA PLATEAU
....ANCIENT KNOWLEDGE REVEALED
ABOUT OUR PAST.....**

**15-28.....- Introduction
ATLANTIS IS IT REAL DOCUMENTATION...
Osiris Tomb - different Tombs and Shafts**

**29-35.... CHAPTER ONE
Defining the Secrets of the Giza
Plateau.....Geometry of the Giza Plateau**

**36-52. -CHAPTER TWO:
Merkaba-Star-Tetrahedron- Merger Cygnus
Star Constellation and planetary Alignment
7.9.2009**

53- 69....CHAPTER THREE- **Tree of Life**

**71-75.... CHAPTER FOUR
-**Locating the hidden temples****

**76-84.....CHAPTER FIVE –
-**Geometries of Perfection****



PREFACE

The path I have chosen over the past 15 years of study along with the 41 personal trips to the Giza Plateau, Egypt has given me the background to put the mathematical formula into working the Final Analysis Diagrams that show the exact locations as well as ground penetration radar evidence to scientifically verify what is shown in the details of the diagrams.

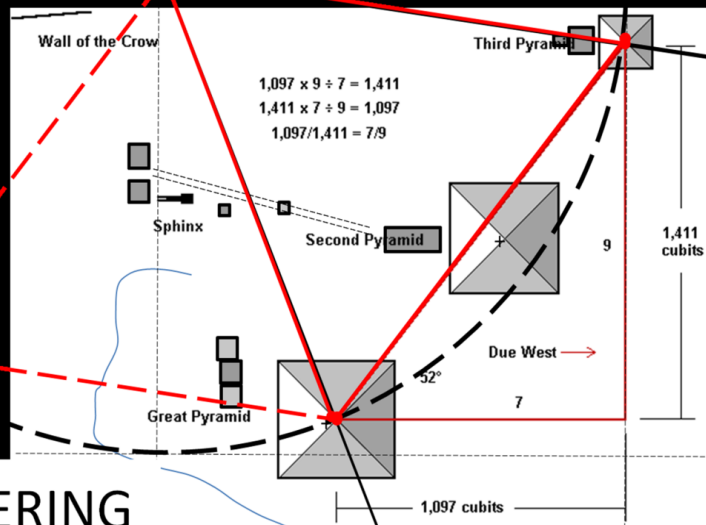
The plan is to disclose the possibilities of various locations from the field research and apply it to an official excavation program at the Giza Plateau,

Egypt.



I am an American Civil Engineer, Egyptology researcher and writer presenting new evidence developed by the latest geometries and GPR studies about the Pyramid areas of the Giza Plateau near Cairo, Egypt.^{8.}

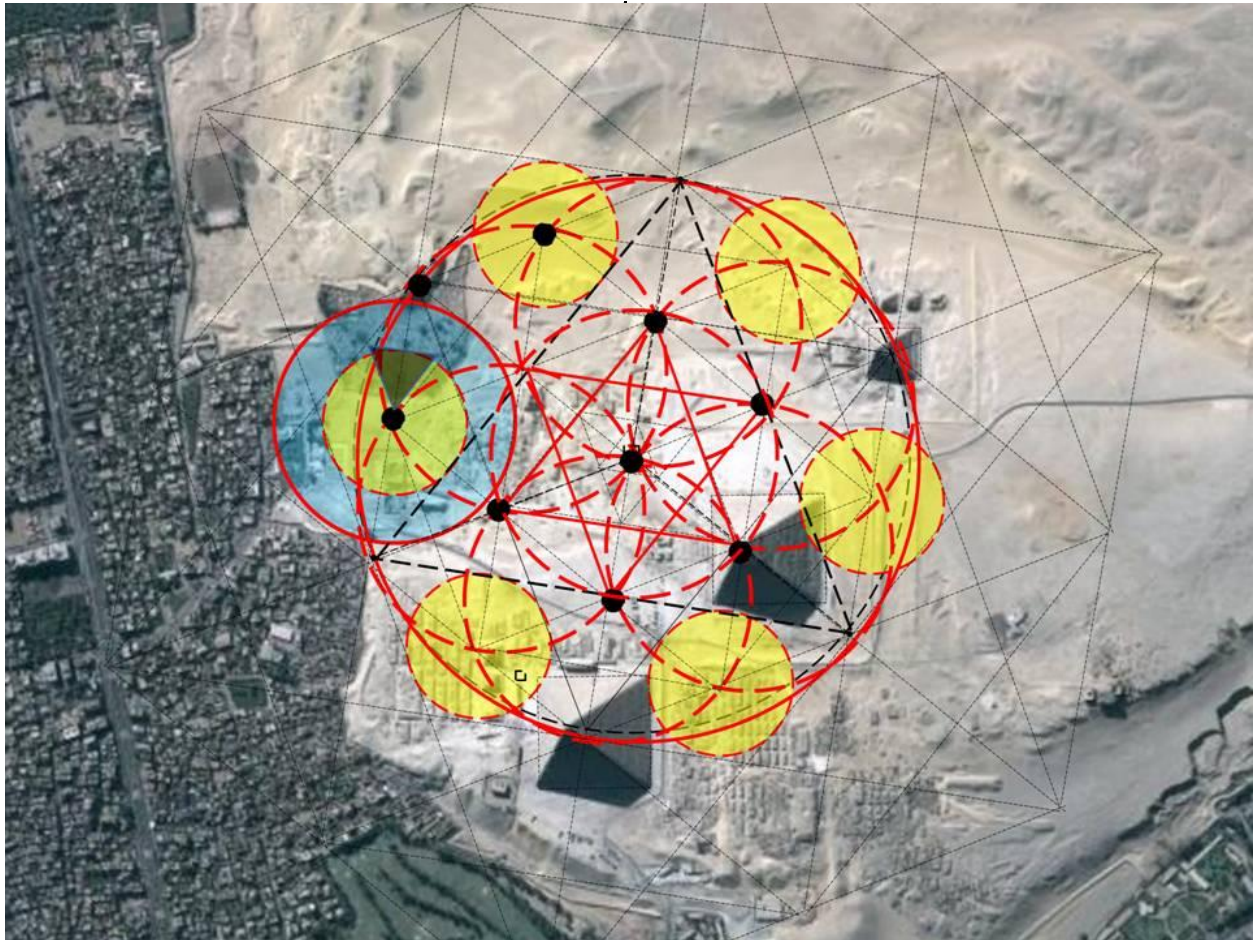
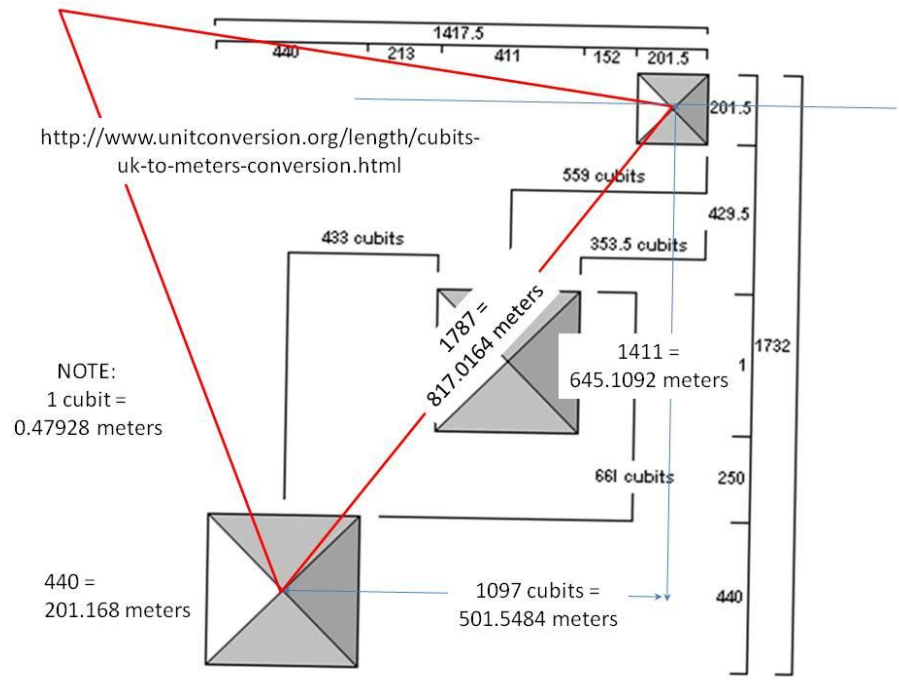
The slope distance from the
Great Pyramid Apex Point
To the 3rd Pyramid Apex Point
is exactly the same distance as the
'Radius' of the Great Circle
Makin Design of an Equilateral Triangle

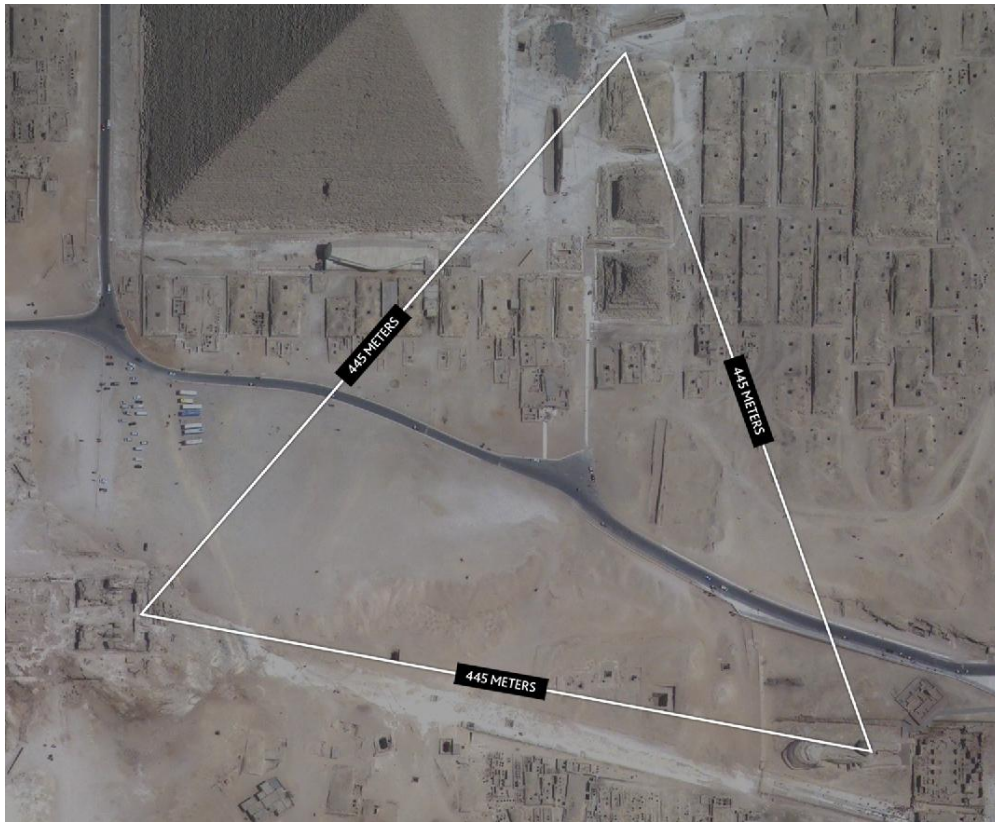


ENGINEERING
DESIGN OF THE
GIZA PLATEAU

The slope of the three pyramids at Giza
from the apex of the Great Pyramid to the
apex of the third pyramid is 9/7, which is an
angle of 52° south of due west.

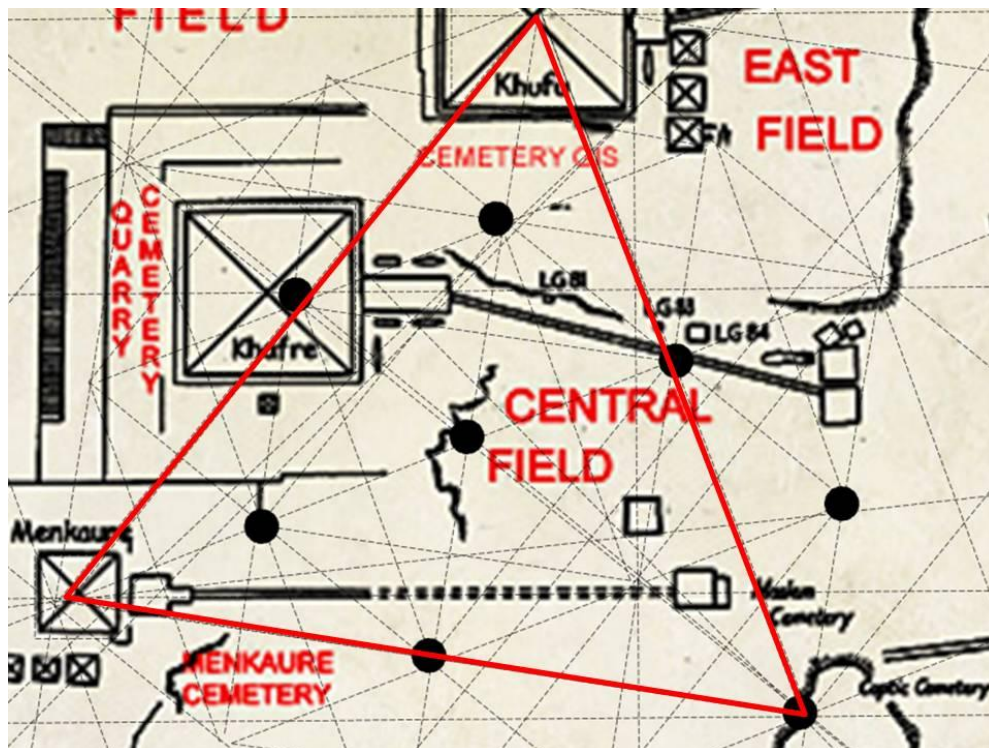
***MATHEMATICAL
RELATIONSHIPS AT THE
GIZA PLATEAU, EGYPT***





GIZA

PLATEAU GEOMETRY SIMILARITIES



HALLS OF RECORD LOCATION



The Halls of Record may soon be discovered in a position of unusual location.

Many ancient records indicate that our SOLAR SYSTEM 'Sun' rose and set in the East on the same day.

This event would have created the scenario of a western sunrise the next day.

ANCIENT KNOWLEDGE REVEALED

...The impact of the asteroid hit at an angle to the plane of the Earth's rotation caused the planet's axis of rotation to alter, tipping the North Pole southwards.

At first the pole tipped 20° from its original angle which before the Flood was around 9°. With time, under the influence of inertia, the tilt of the axis gradually changed.⁴⁰

According to the ancient text after the asteroid impact the Earth partially turned over.

Then the points of the compass changed places. The Sun rose on the western horizon and set in the east.

In his History Herodotus wrote:

«At that time, so the priests said, the sun rose four times not in its usual place: that is, twice it rose where it now sets and twice it set where it now rises».

The Chinese treatise Huai-Nan-Tzu describes this event and the change in the tilt of the Earth's axis in this way:

«The celestial vault fractured, the Earthly balance was broken. The sky tilted to the north-west. The Sun and the stars moved. The Earth to the south-east proved hollow and so the water and silt rushed there...

In those distant times the four poles were destroyed; the nine continents broke apart... fire blazed constantly, the waters raged incessantly».

The terrible impact slightly slowed the Earth's speed of rotation, which at first caused a colossal tidal wave that swept away everything in its path. Then the tilt of the axis and the retarded rotation disrupted the mechanism of precession and "the whole system of the Universe was thrown into disorder." The priests who kept track of all that took place left a record that the constellations lying along the line of the ecliptic changed the direction of their precessional motion to the opposite. The Ancient Egyptian papyrus asserted that the seasons changed:

«Winter came like summer; the months followed in reverse order and the hours became confused».

Instead of the customary, natural movement anticlockwise in respect of the Sun rising on the horizon, the constellations began to roll up from behind the horizon in clockwise order.

Thinking.....Outside the Box

"Do not allow yourself to be limited by that which you have been taught" –

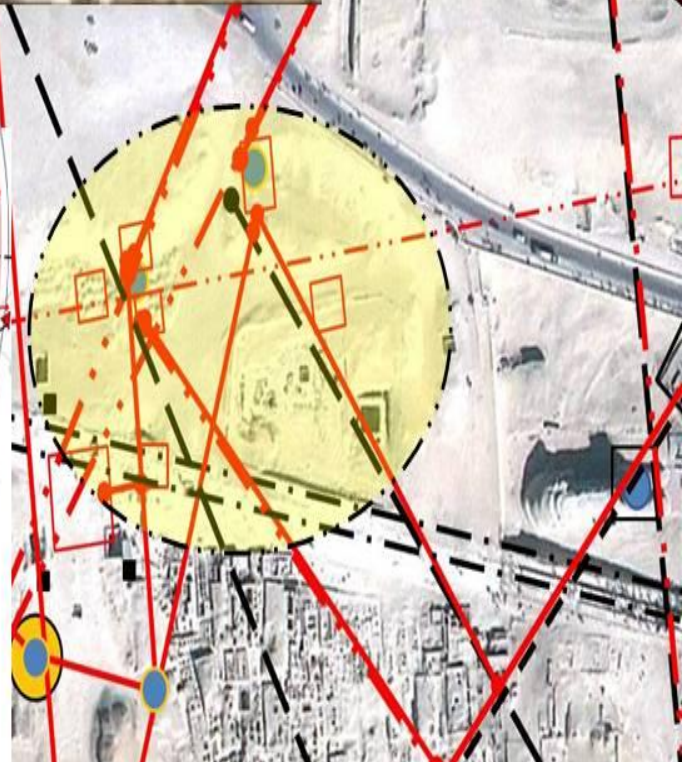
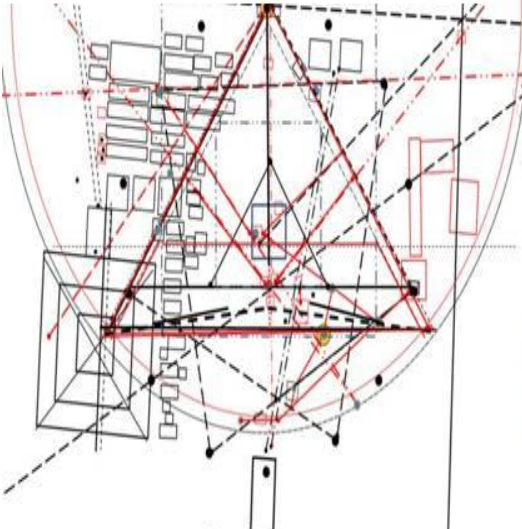
To live within the boundaries of what has been taught is to limit your own experience.

Prior knowledge becomes the pivotal point, the springboard from which to access new and more complete truths.

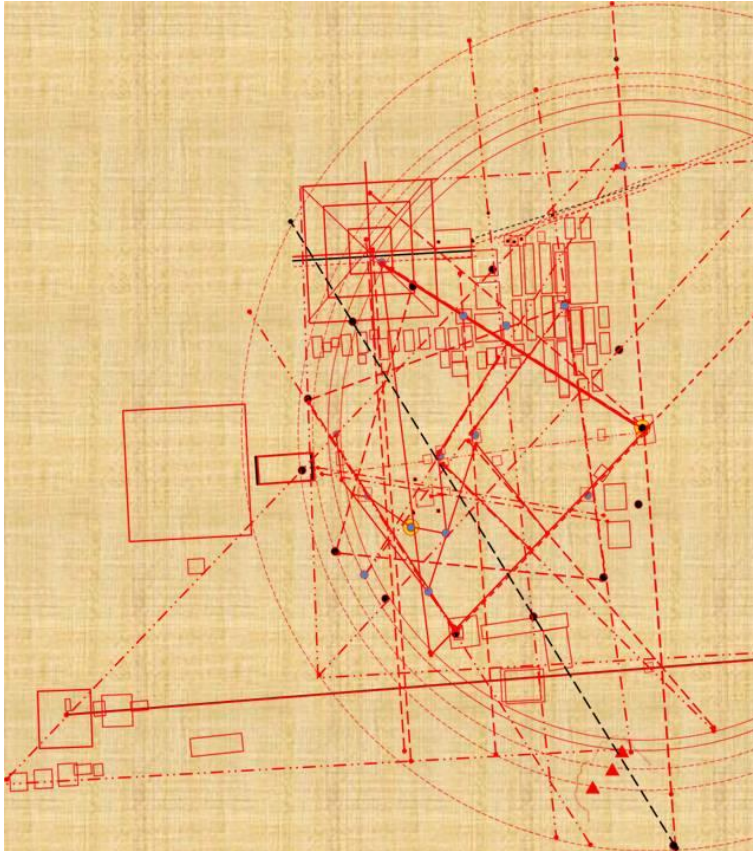
- The greatest crime of the 'religious' teachings is that it makes the devotee think they know it all
- when really all they know is what the Matrix wants them to believe,
-never comprehending that there is something totally beyond that which their 'limited' experience and 'mind' can conceive.



ATLANTIS IS IT
REAL?

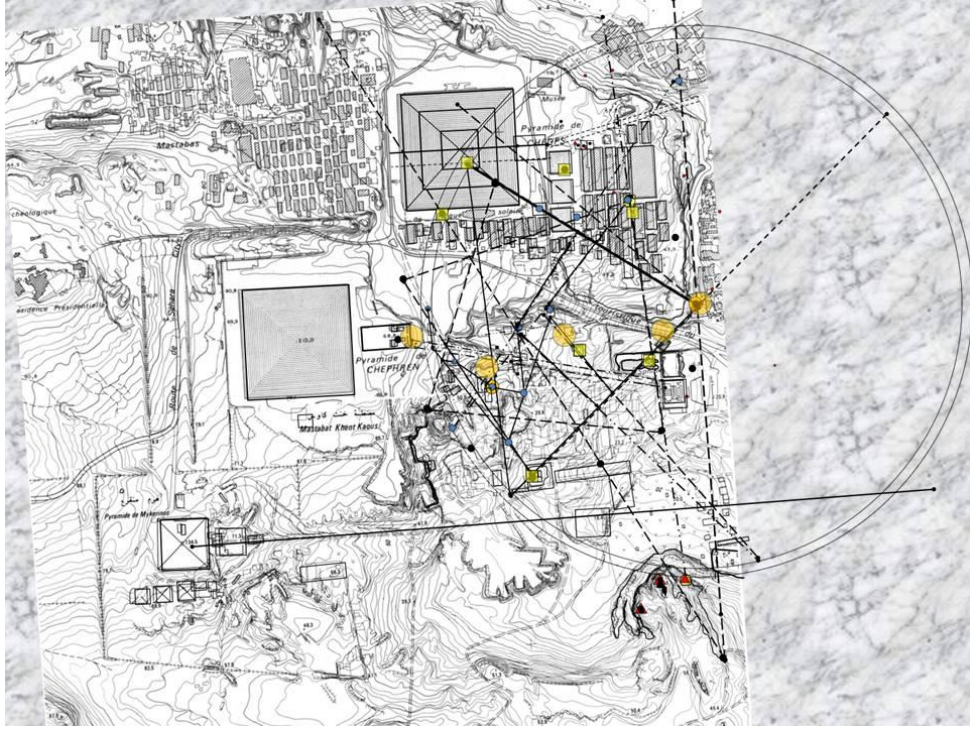


INTRODUCTION

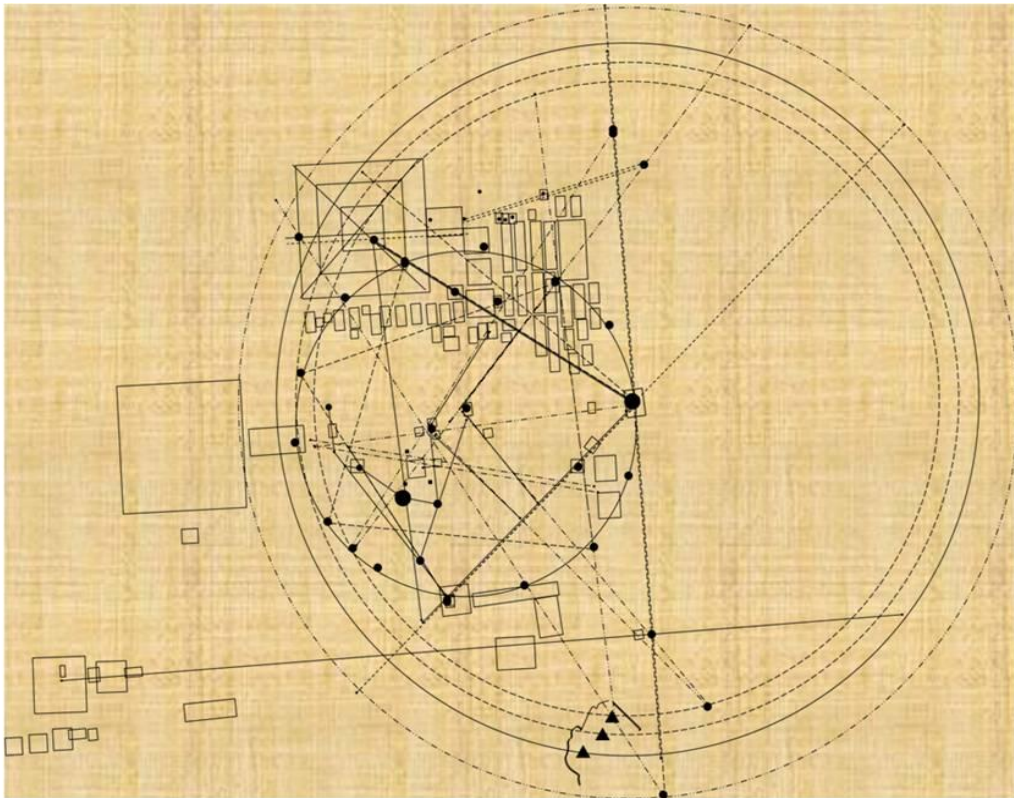


**THE FINAL
DESIGN
ANALYSIS
OF THE
GEOMETRIES
THAT DEFINES
THE GIZA
PLATEAU,
EGYPT**

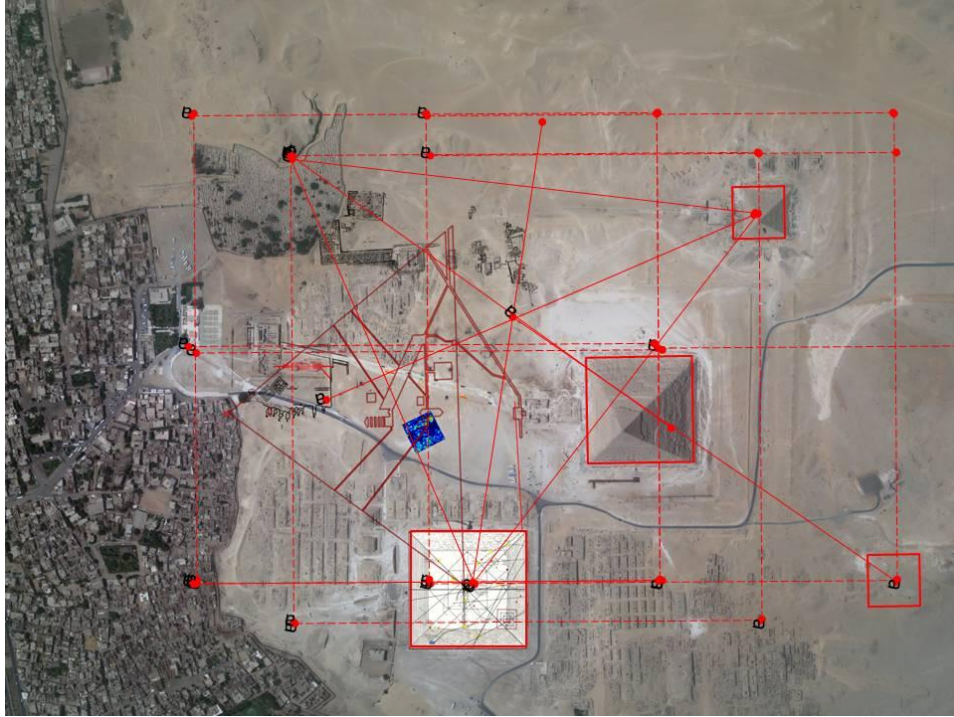
**THE SITE PLAN DESIGN OF THE ENTIRE
GIZA PLATEAU IS A MIRROR OF AS ABOVE
SO BELOW REALITY. The ancient
underground world is mirrored in the
design features used to build the Great
Pyramid indicating exact locations of
rooms above and below ground as shown
in the line diagrams above.**



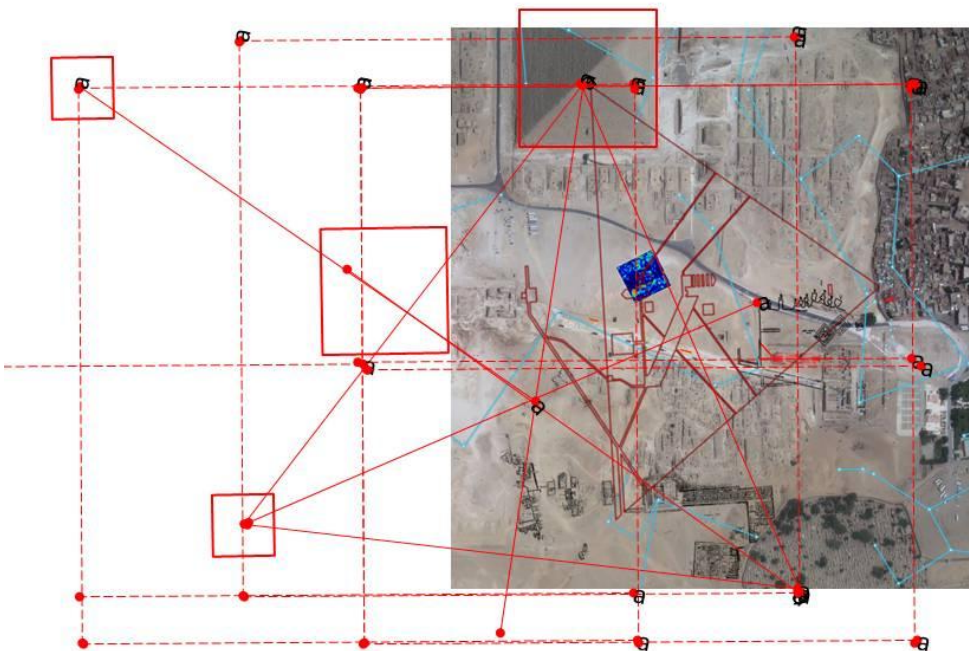
The Mathematics Diagrams of Giza

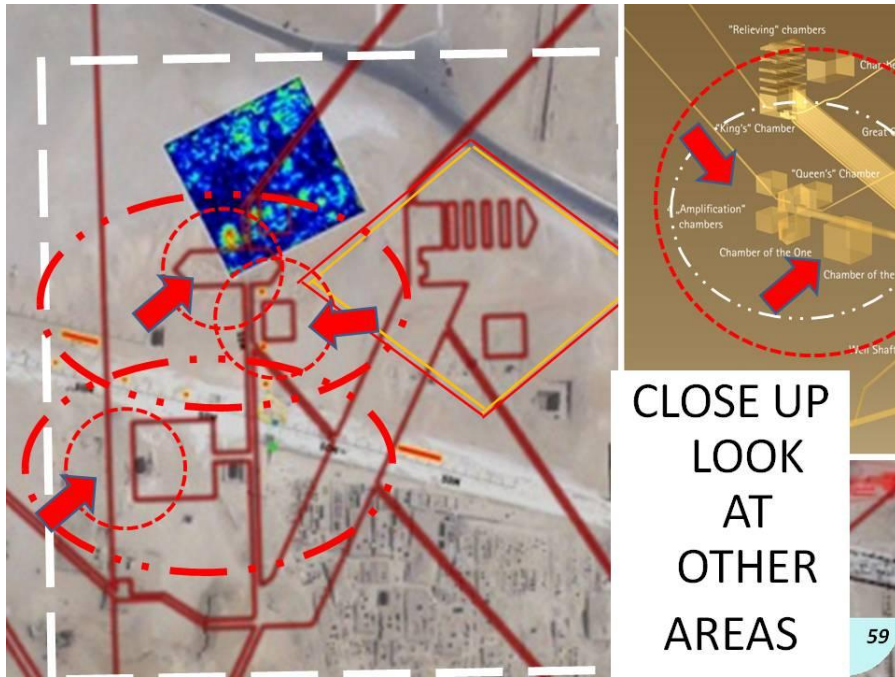


1



MATHEMATICS OF THE GIZA PLATEAU, EGYPT



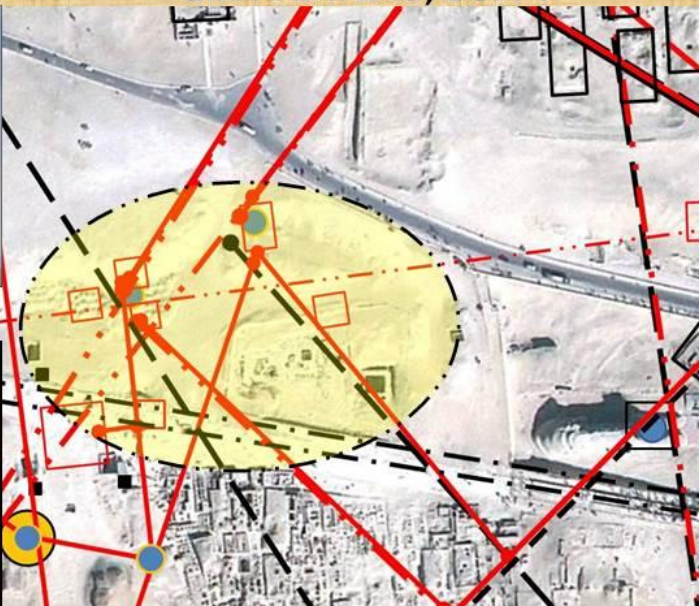


PLAN LOCATIONS

**2006 TV SHOW by USA
National Geographic's
Interview
PLAN LOCATIONS of
UNDERGROUND ROOMS AT THE
GIZA PLATEAU, EGYPT**



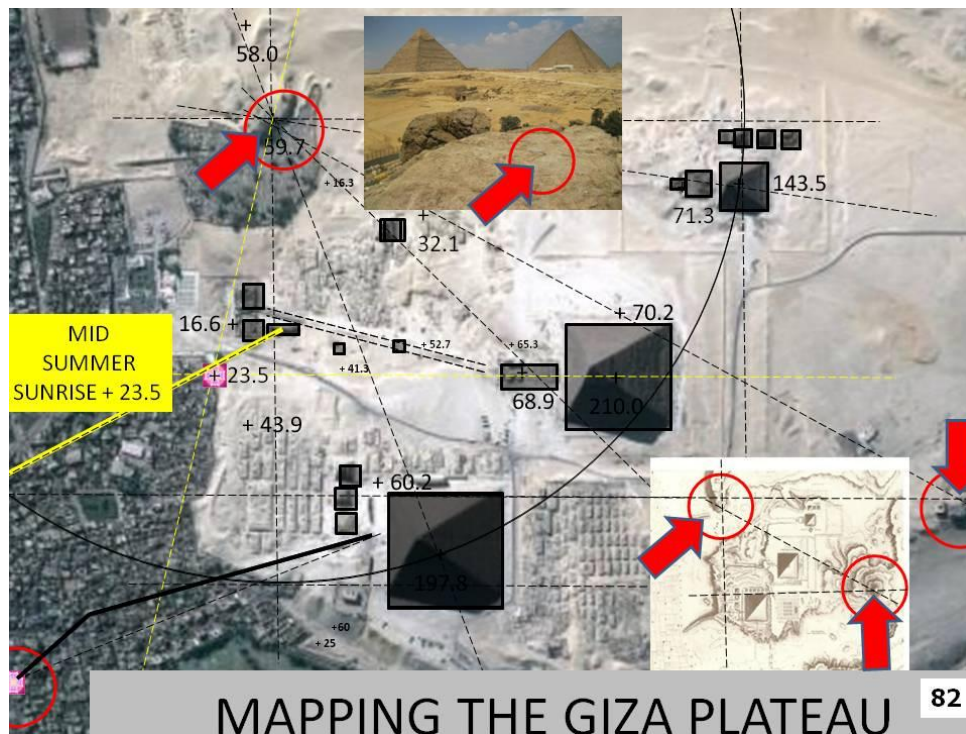
GPS LOCATIONS

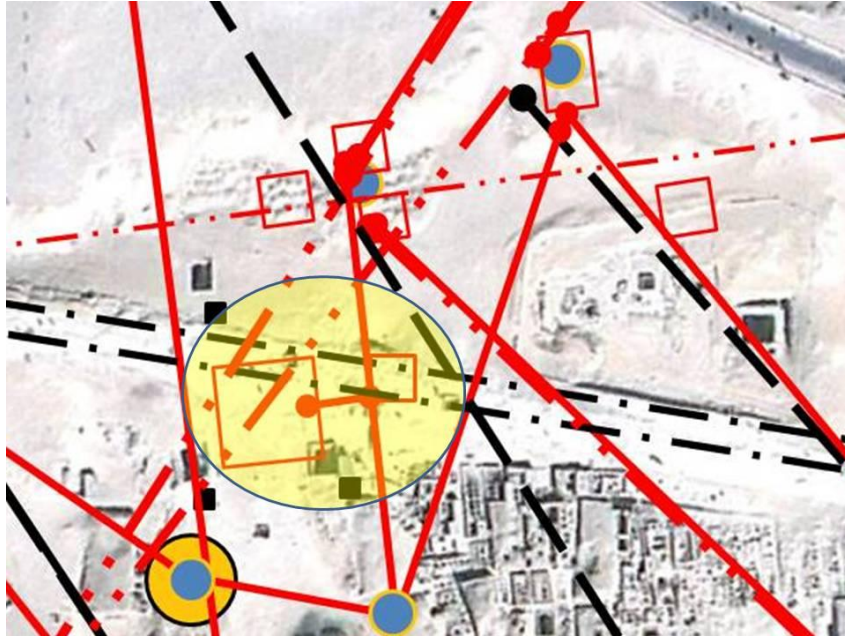




THE UNDERGROUND WORLD OF THE GIZA PLATEAU

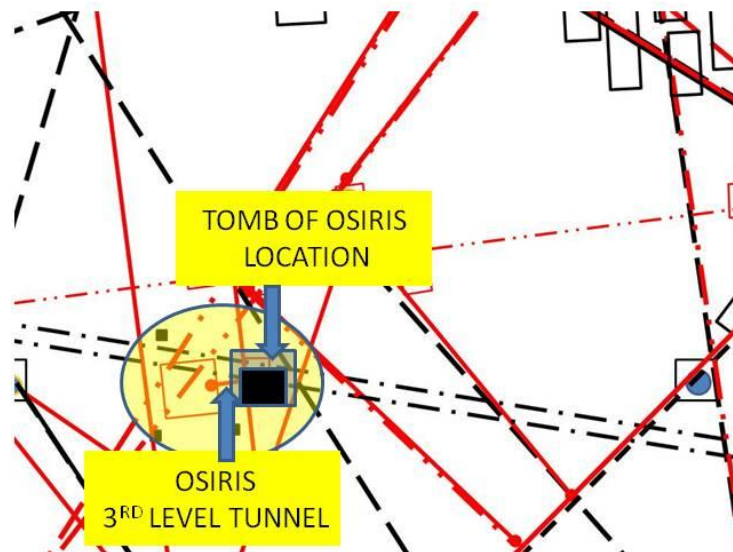
AS ABOVE..... SO BELOW





**THE MYSTERY OF THE 3RD LEVEL OSIRIS NW TUNNEL EXPLAINED
IS BASED ON THE LOCATION OF AN UNDERWORLD TOMB SHOWN IN
THE YELLOW AREA ABOVE IN THE LINE DIAGRAM BELOW....**

LOCATION OF UNDERWORLD TOMB



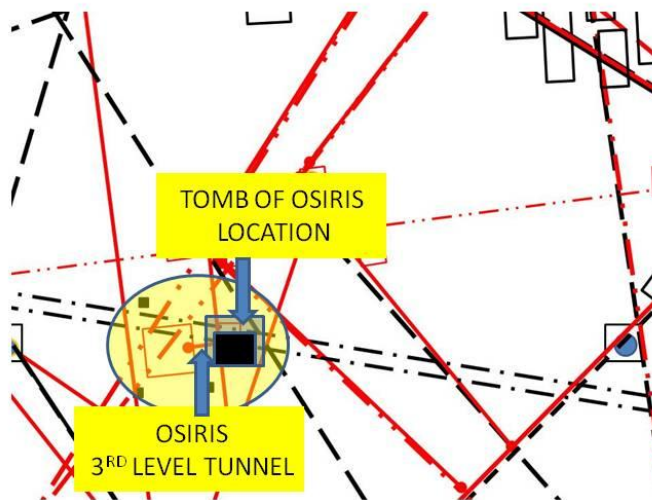
LOCATION OF POSSIBLE NEW UNDERWORLD TOMB UNDER THE SPHINX CAUSEWAY

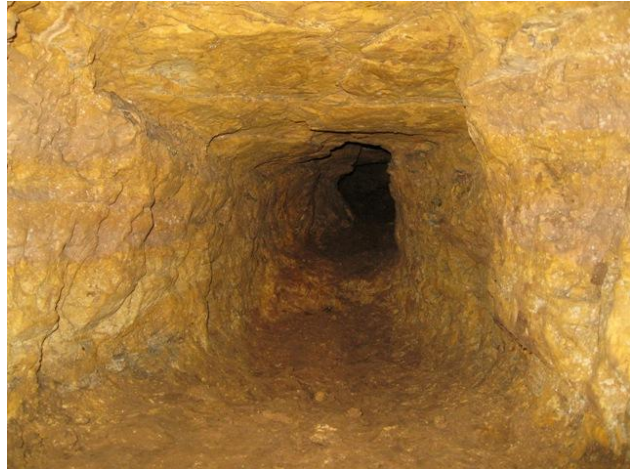


ENLARGEMENT DIAGRAM (ABOVE)

OF THE INNER PYRAMID DIAGRAM AS SHOWN BELOW

LOCATION OF UNDERWORLD TOMB





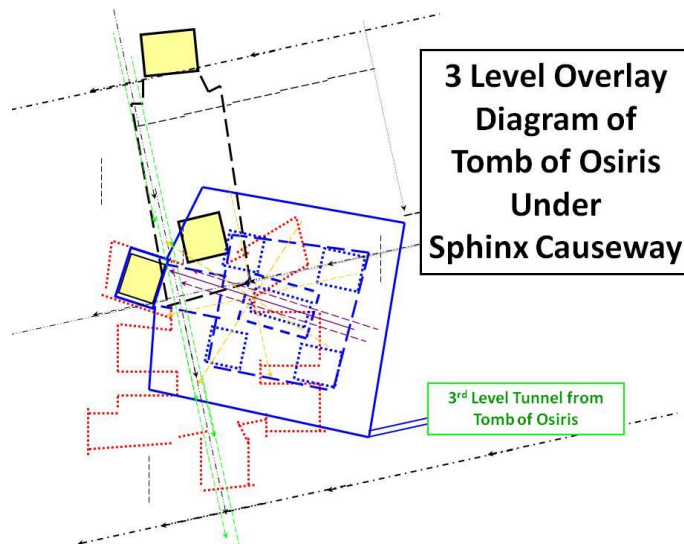
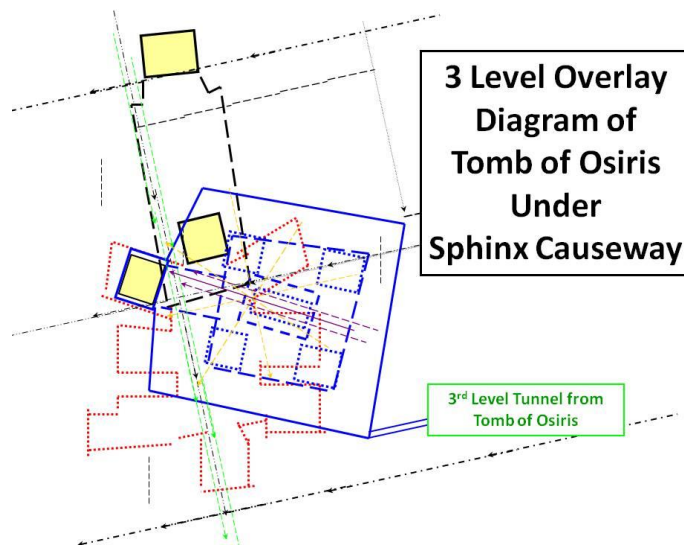
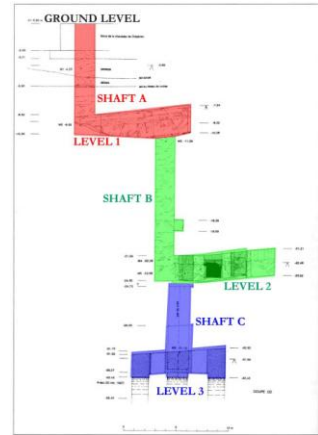
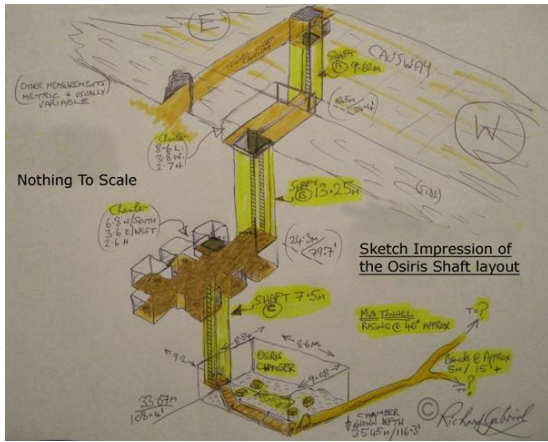
Picture Source: <http://www.richardgabriel.info/OSIRIS.html>

The referenced picture above was taken by my friend Richard Gabriel as he crawled up the incline of the tunnel. It rises at about 40 degrees, and after a few meters swings to the left - which would be somewhere in a rough Westerly direction.

He was able to distinguish that there may have been a branch in the tunnel to the right, but was unable to get deep enough to confirm. As you will see in subsequent pictures, there are certainly undetermined shaft anomalies on the surface which would tie up with the mud tunnel direction!

Read also about other links to see how Zahi Hawass has licensed Japanese researchers to map the whole tunnel. As with so many other promising research initiatives, whatever was really found is being kept for Zahi Hawass attention at this time.

Following this article you will be able to go to see my colleague website for a continuation of this story and possible reasons for the deep subterfuge which has strangled it.



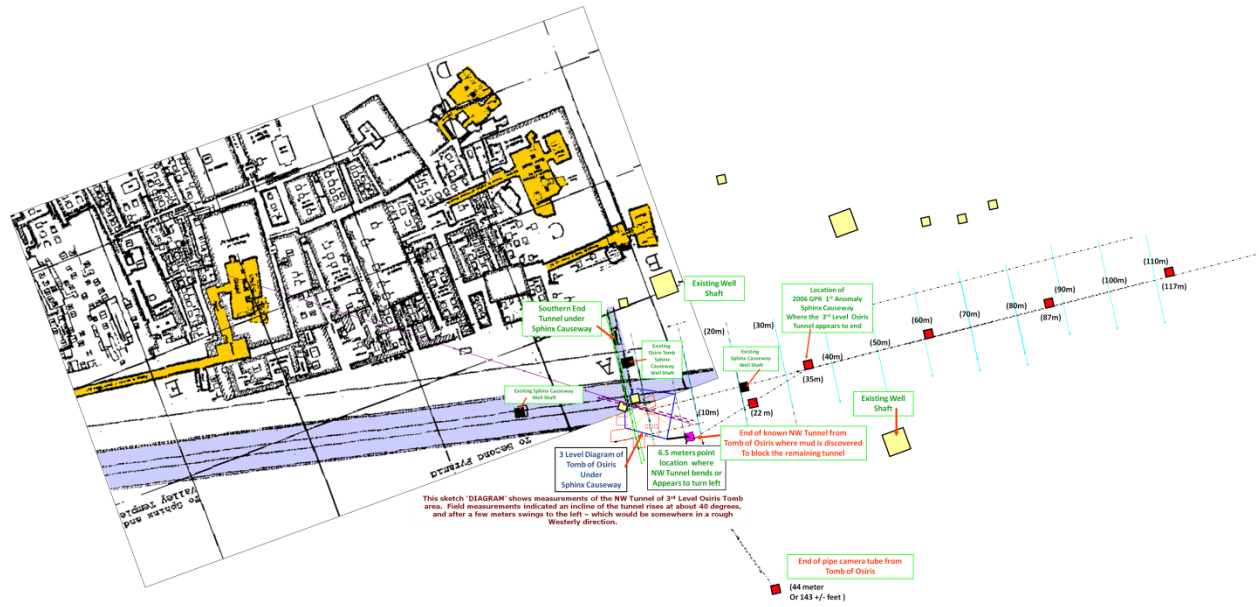


DIAGRAM OF OSIRIS TOMB

AT THE SPHINX CAUSEWAY

Details of the 3rd level Osiris Tomb northwest tunnel that appears to lead to the exact spot location of a 2006 GPR scan of the Sphinx Causeway

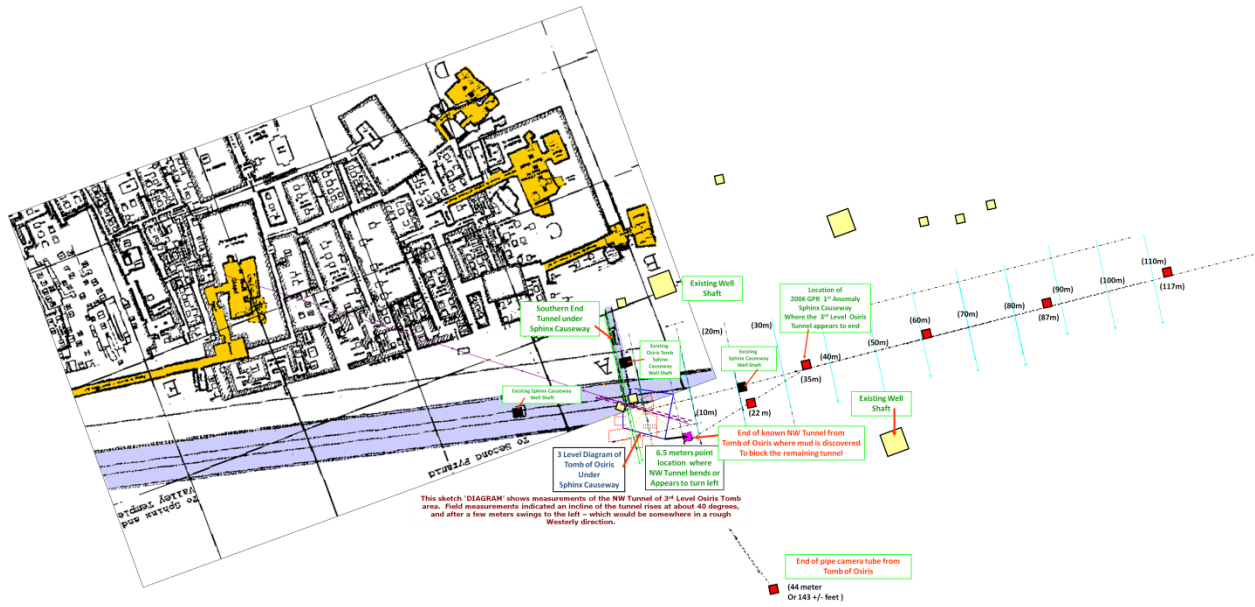


DIAGRAM OF OSIRIS TOMB

AT THE SPHINX CAUSEWAY

Details of the 3rd level Osiris Tomb northwest tunnel that appears to lead to the exact spot location of a 2006 GPR scan of the Sphinx Causeway





**The beginning of the end of
.....The tunnel....**



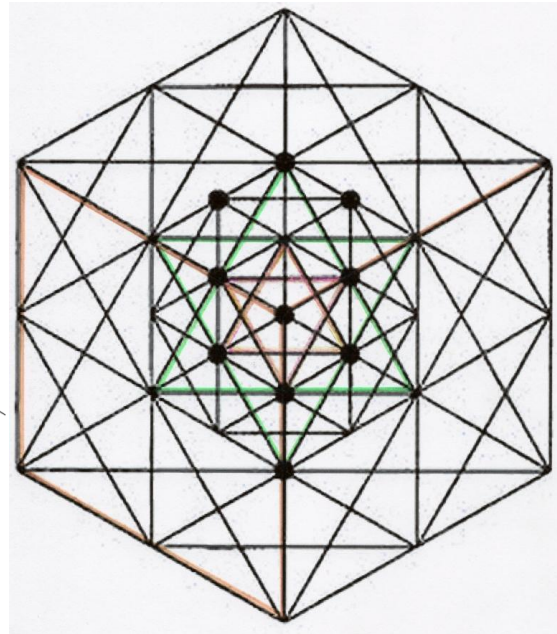
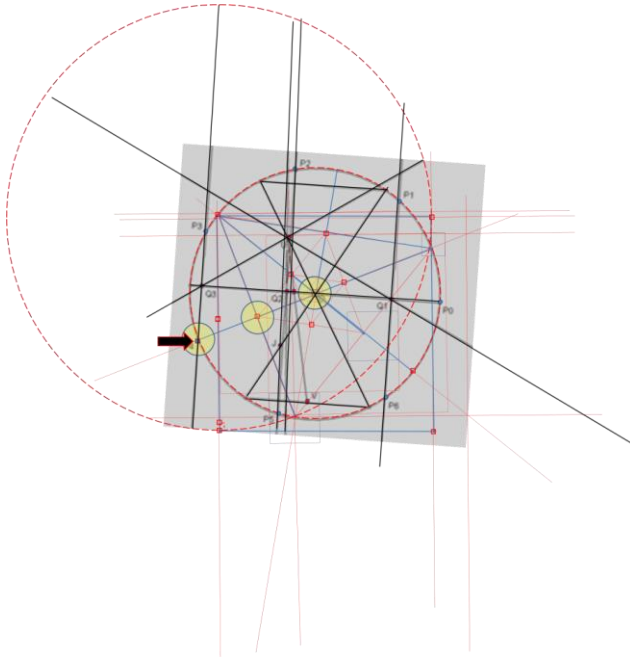
The End of the Tunnel of the 3rd Level Tomb of Osiris

Where does it go?

**For more information relating to this article refer
to the following posted website article:**

JUNE 2011

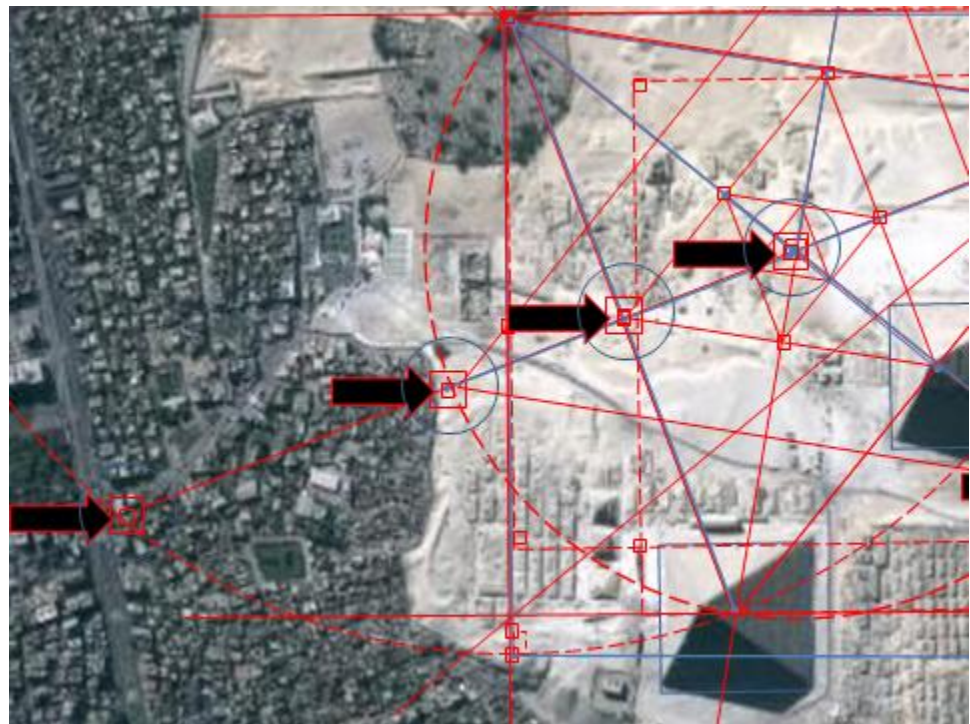
<http://www.richardgabriel.info/OSIRIS.html>



THINKING OUTSIDE THE BOX

DEFINING THE SECRETS OF GIZA PLATEAU, EGYPT

CHAPTER ONE

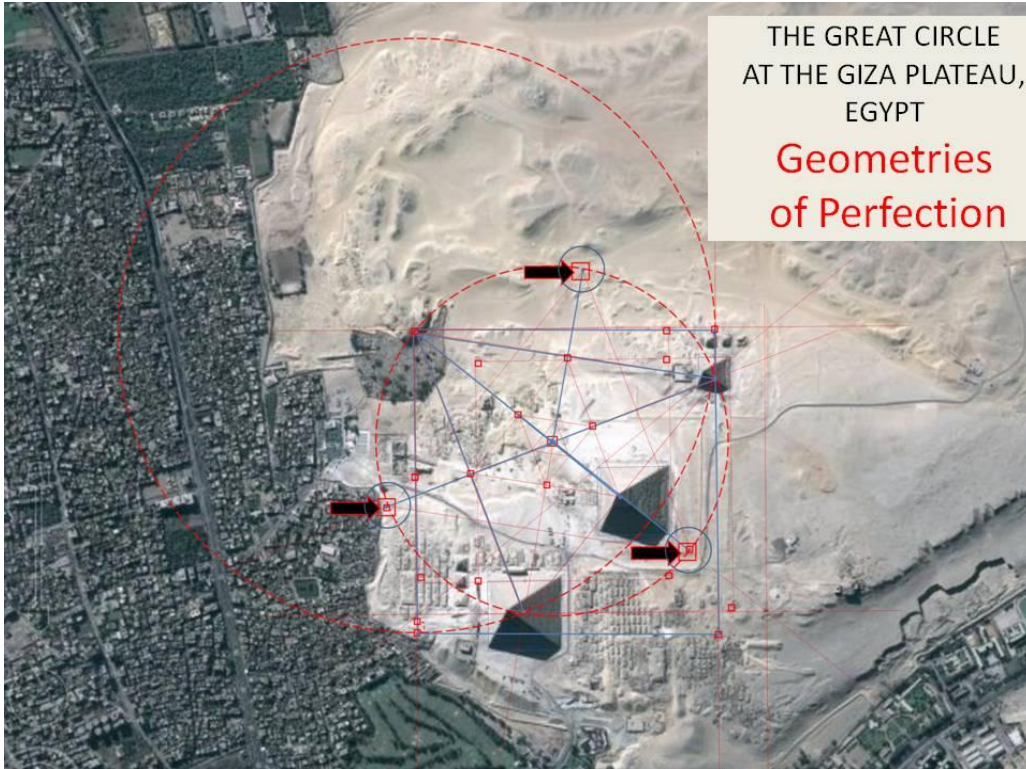




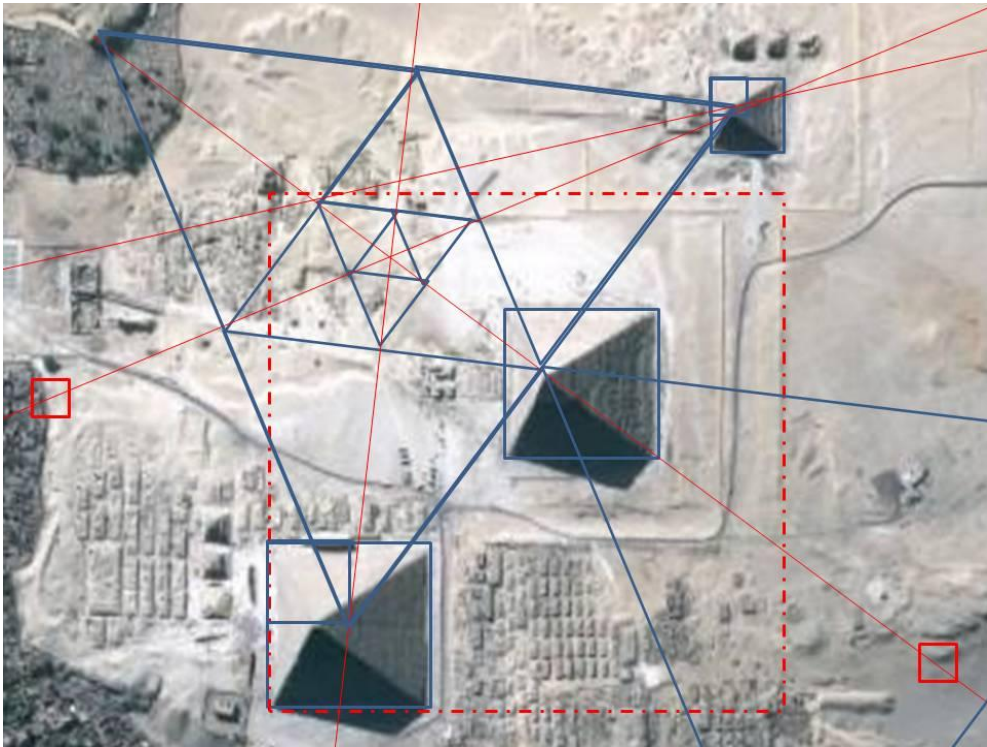
DOES THE GEOMETRICAL IMAGE ABOVE LOOK LIKE ANYTHING YOU HAVE SEEN BEFORE?

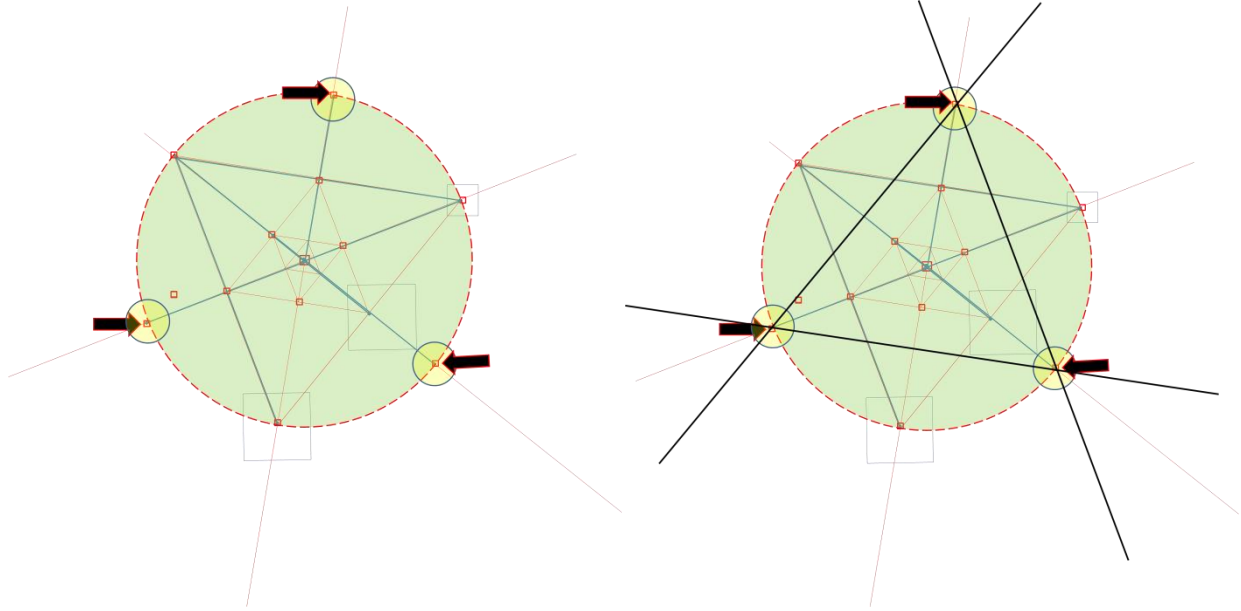
A series of landmark locations have been found to correlate with the symbol giving challenging questions as to whether it is just a coincidence or designed that way on purpose into the landscape of the Giza Plateau, Egypt.

You be the judge after evaluating the following information.

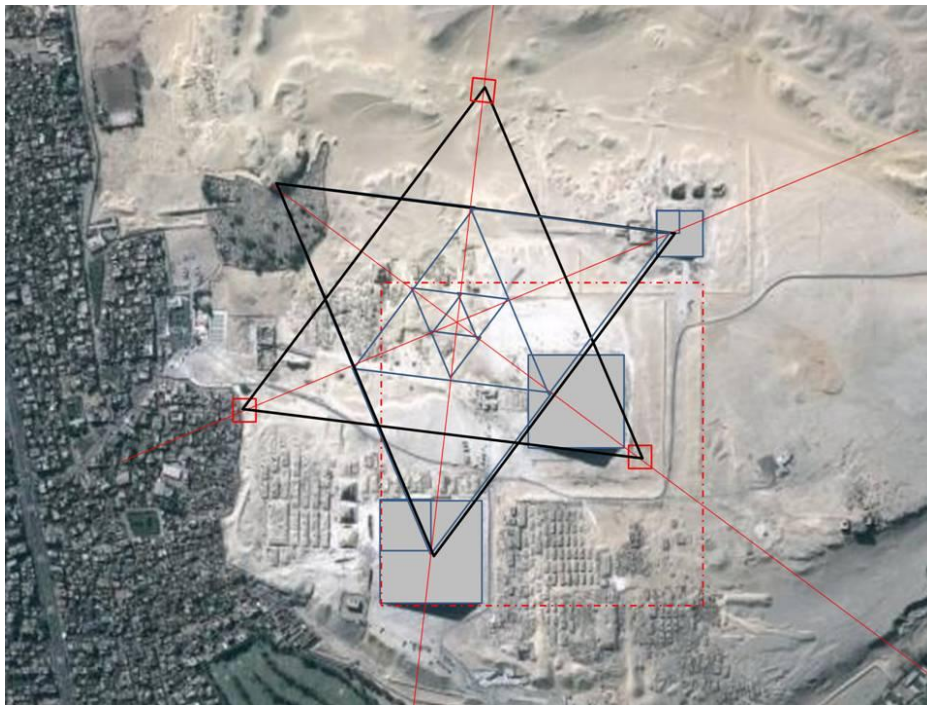


THE GREAT CIRCLE DIAGRAM IS COMPOSED OF VARIOUS EQUILATERAL TRIANGLES AS SHOWN IN THESE DIAGRAMS

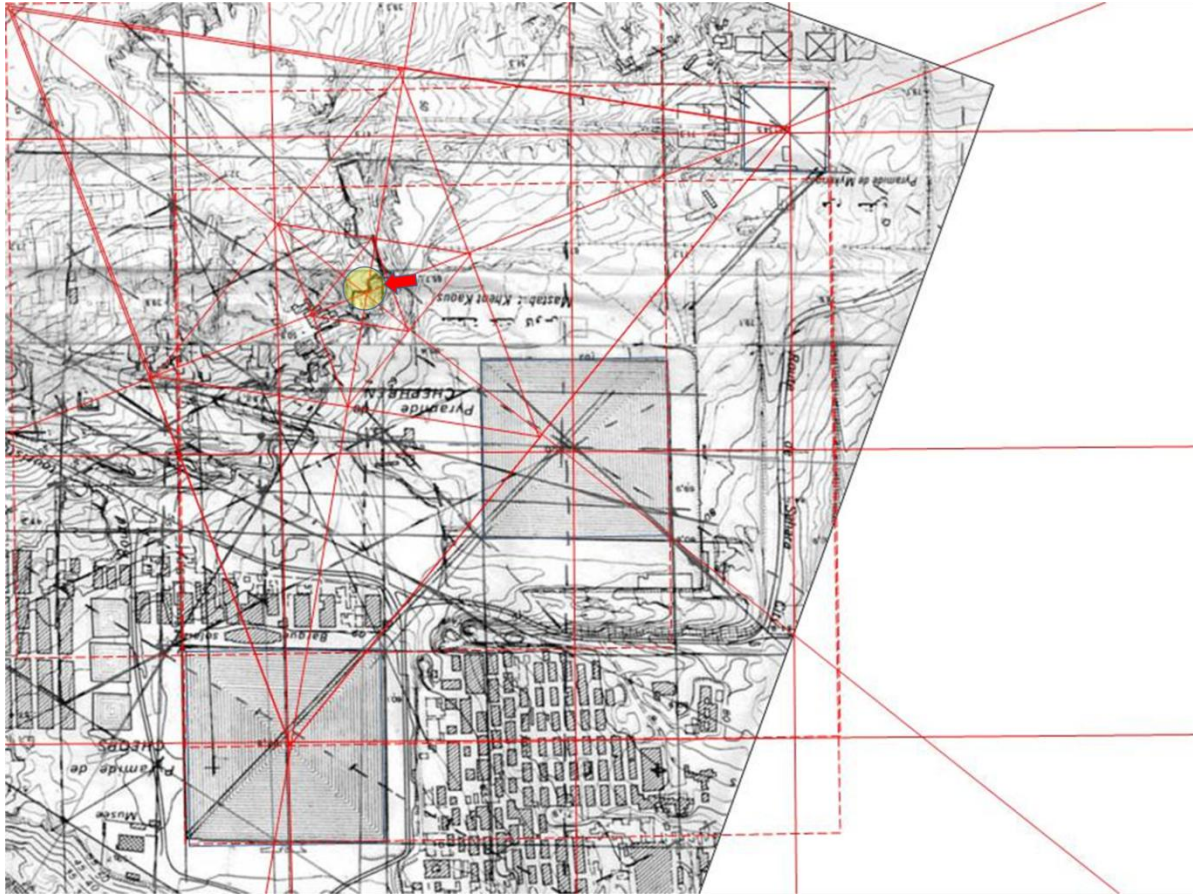




**MATHEMATICS OF ROTATING TRIANGLES CREATING A
'STAR OF DAVID' GEOMETRICAL IMAGE**

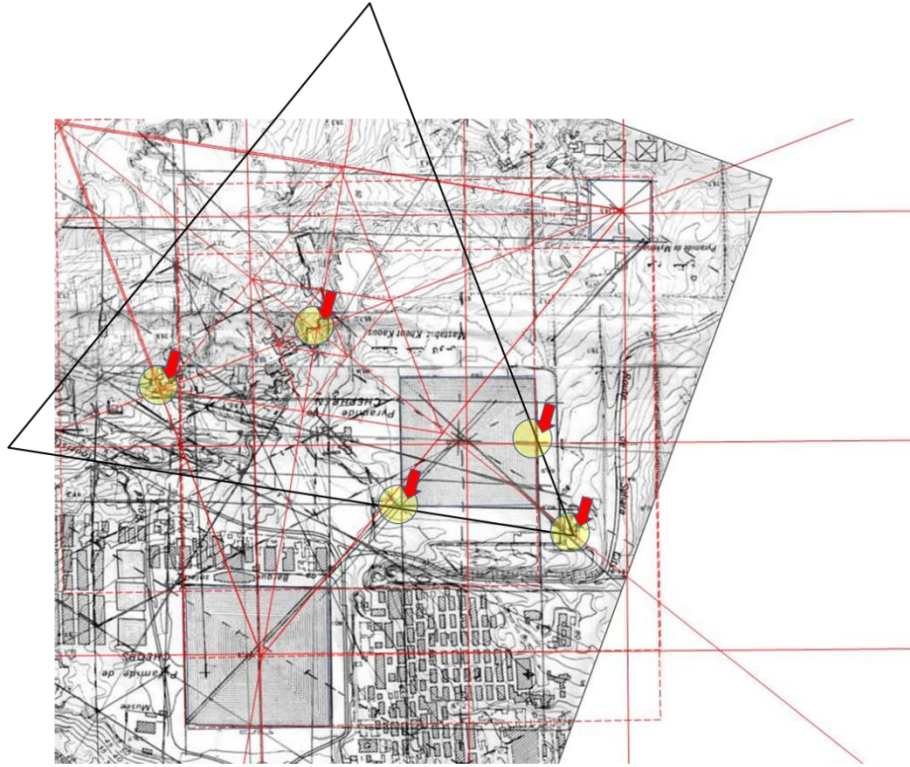


Giza Plateau Image of Star of David Triangle



THE CENTER POINT OF THE GIZA PLATEAU

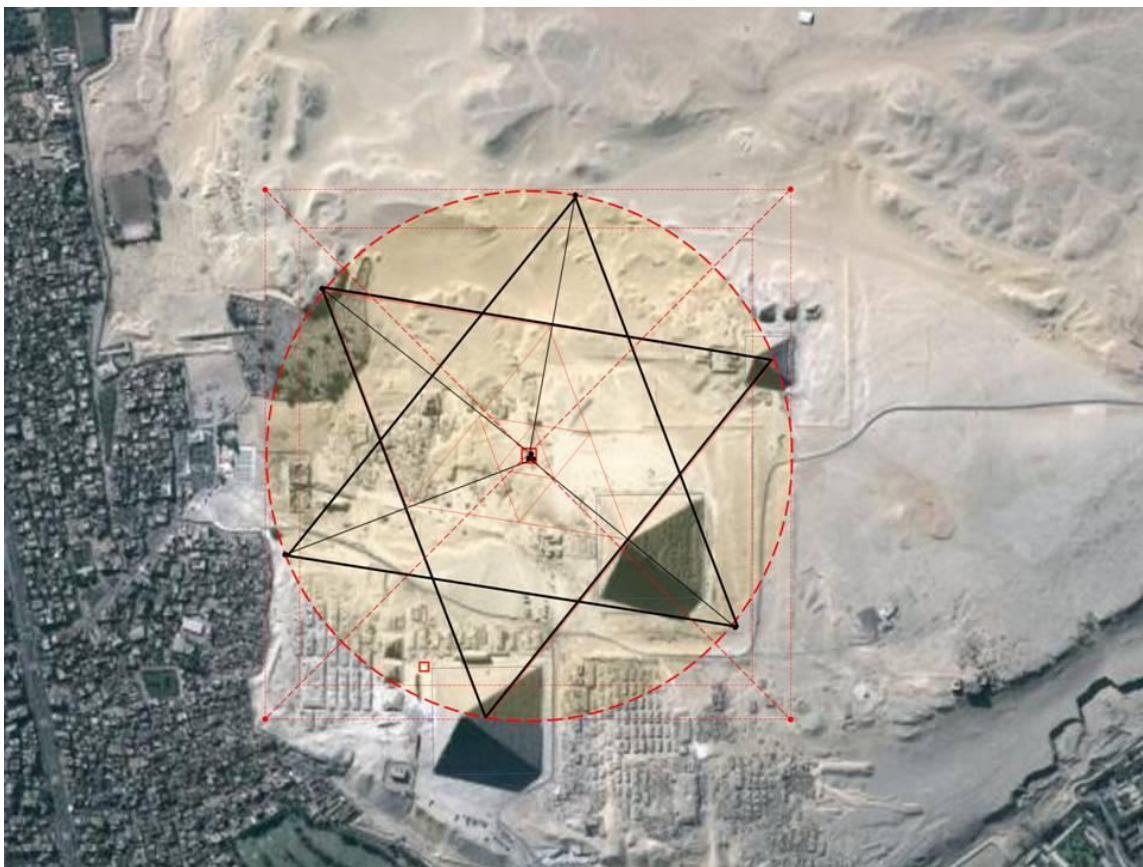




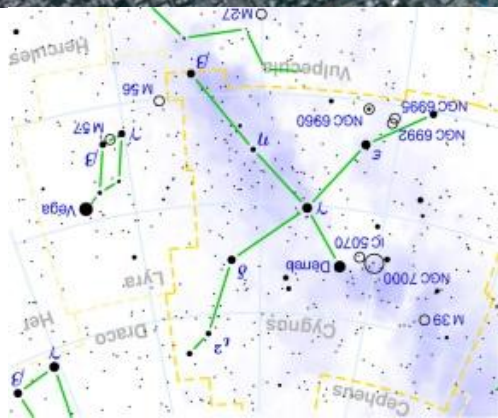
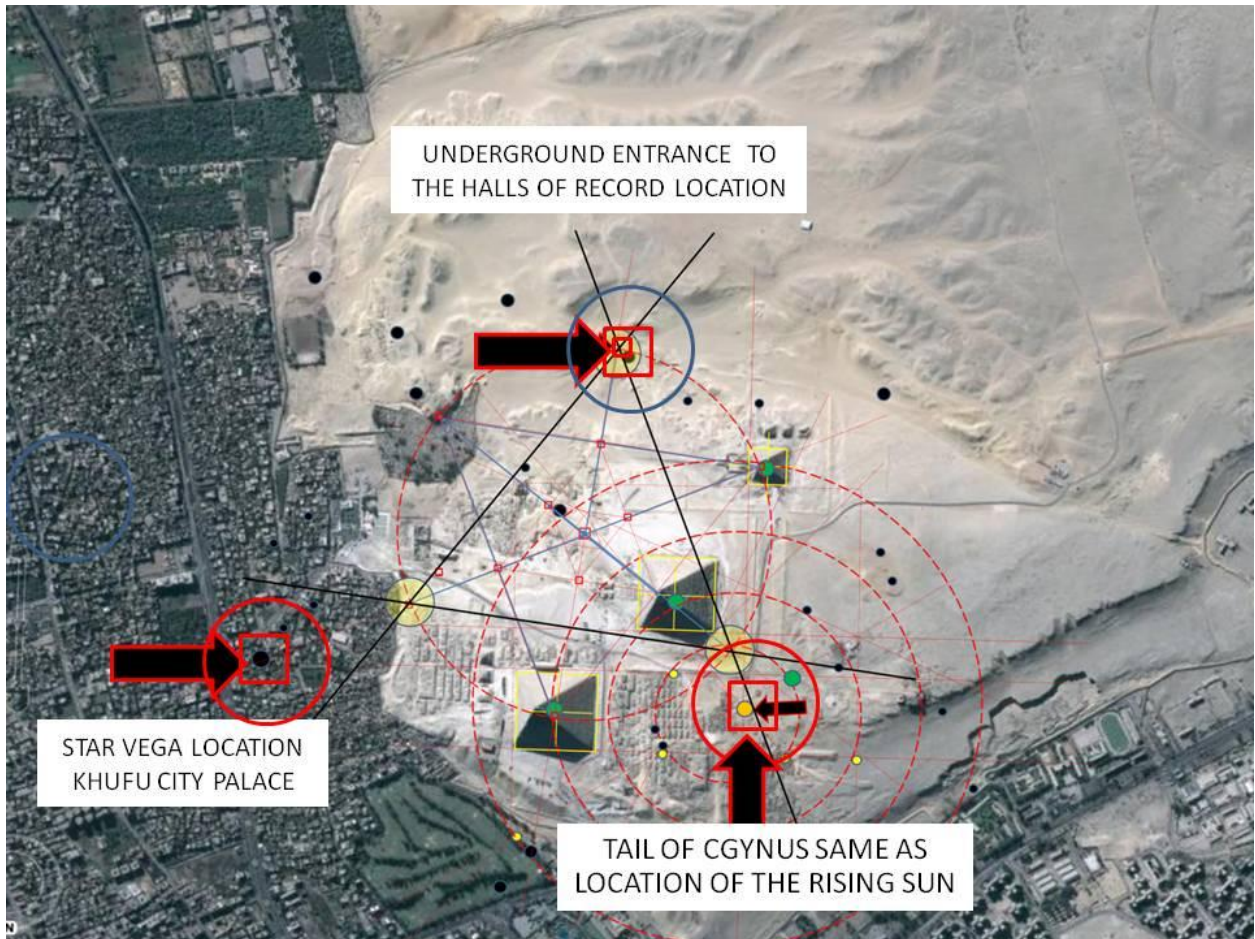
While one triangle pin points the apex location of the Great Pyramid and 3rd Pyramid with a point at the top of Gebel Gibli, the other triangle begins to define the markers on the ground of other important locations.

Here we see the NE corner of the 2nd Pyramid as well as its western midpoint. The apex of this triangle establishes the rock cut corner of the cliff area that defines the level area of the 2nd Pyramid.

The center of the geometry of the double triangle has already identified itself at the same corner of the rock cut cliff defining the quarry area of the building materials of the pyramid.



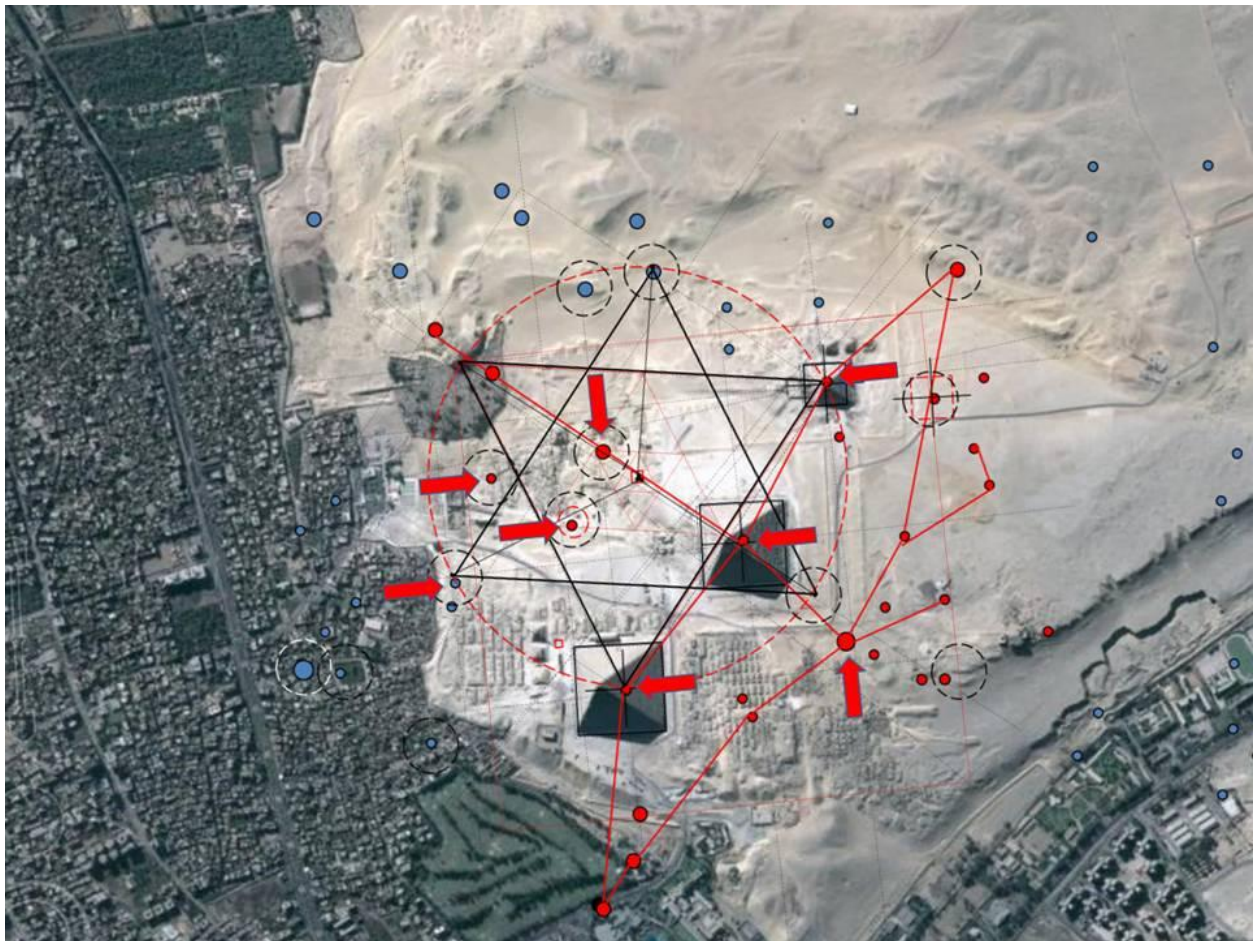
Other coordinate points identified by the apex points of this geometrical pattern as shown above will be discussed in the next part of this writing.



CHAPTER TWO

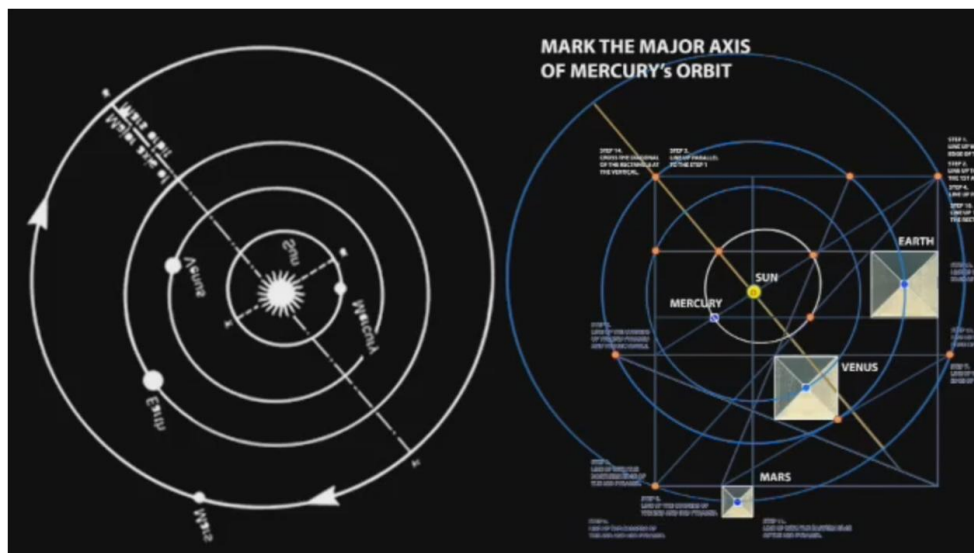
The Cygnus Constellation and Vega Star to ground correlate to interesting ground locations at Giza.

What does a geometrical design image called a Merkaba Star Tetrahedron aligned to a specific star constellation known as the Cygnus based on a specific future date tell us about the ancient knowledge of the Egyptians?



Why does every point of the Merkaba star image define a specific point on the ground?

***IT POSSIBLE THAT... the alignment of
the THREE Pyramids of Giza Egypt
matches an important 'astrological'
date about a celestial event encoded
within a message given to us by the
ancient Egyptians?***

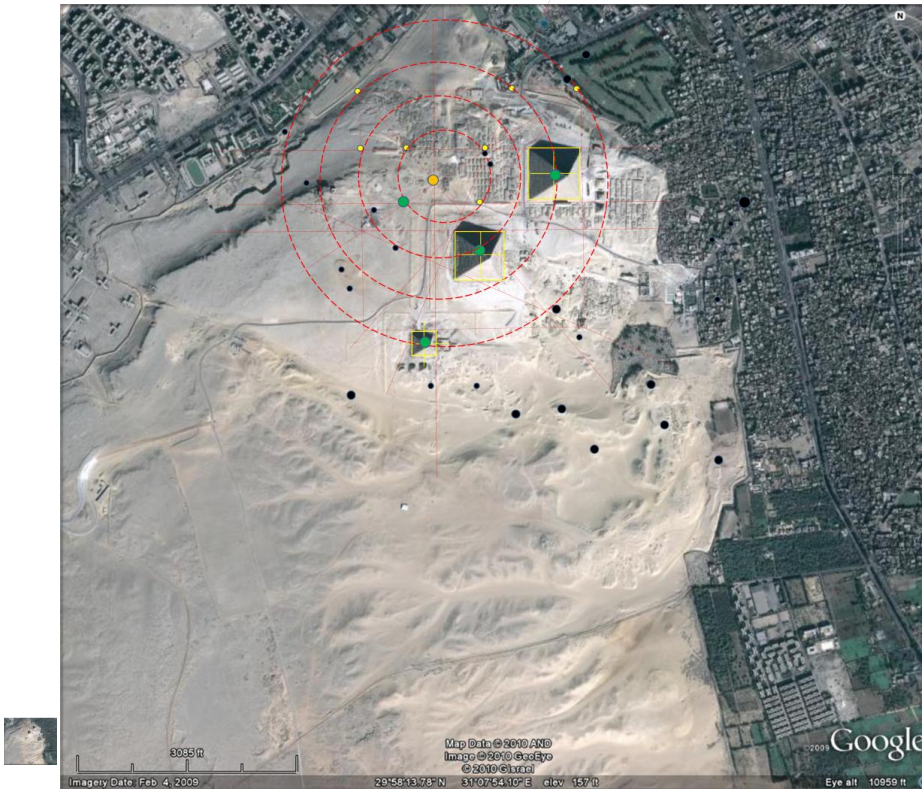


**July 9, 2009 Astrological~Planetary Alignment
....overlay at the Giza Plateau, Egypt....**

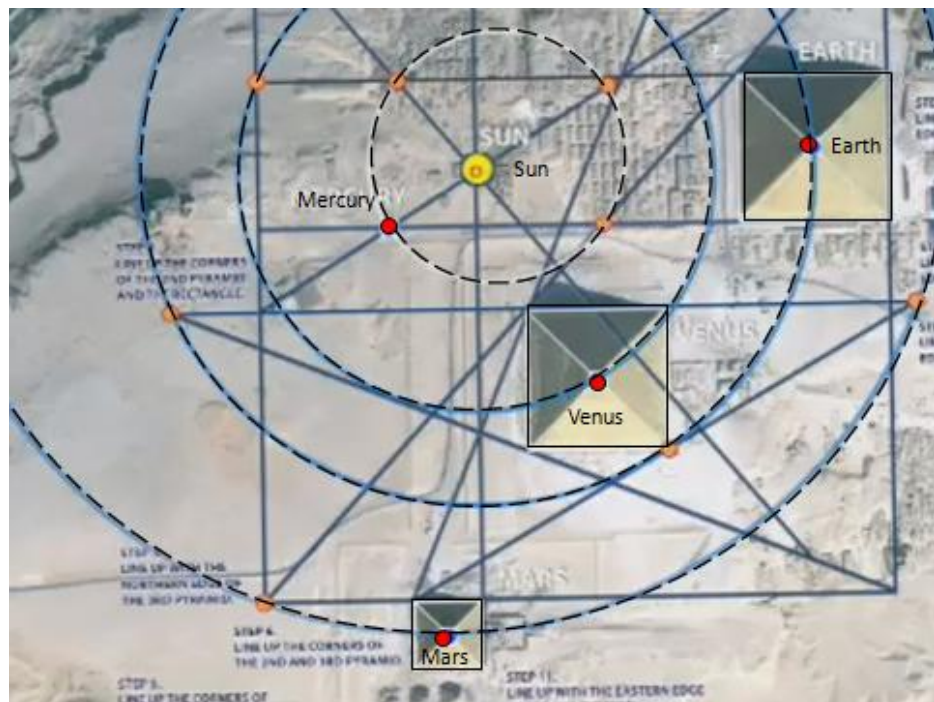


PLANETARY ALIGNMENT OF JULY 09, 2009 AT THE GIZA PLATEAU, EGYPT

**An overlay of the 4 inner planets of our
Solar System matching perfectly the
alignment of the three (3) Pyramid at Giza**



PLANETARY ALIGNMENT OF JULY 09, 2009 AT THE GIZA PLATEAU, EGYPT





PLANETARY ALIGNMENT OF...
...EARTH ... VENUS ...AND MARS...
JULY 09, 2009 CELESTIAL EVENT THAT
MATCHING THE APEX POINTS OF THE THREE
PYRAMIDS AT GIZA PLATEAU, EGYPT

**A PLANETARY ALIGNMENT RECENTLY
APPEARED IN THE COSMIC ORDER OF THE
UNIVERSE ON JULY 9, 2009.**

**Due to the nature of re-occurring astrological
events, it is challenging to consider the
possibility that this may have happened in the
distant past.**

**Could the Egyptians have known about it at that
time or are they speaking about a 'cycle' event?**



THE ANSWER:

The ASTROLOGICAL image shown above is that of the star constellation of Cygnus known as the Great Mother; (The Swan)

is flying in a direction headed directly toward what is defined as the Holy Mountain (Gebl Gibli)

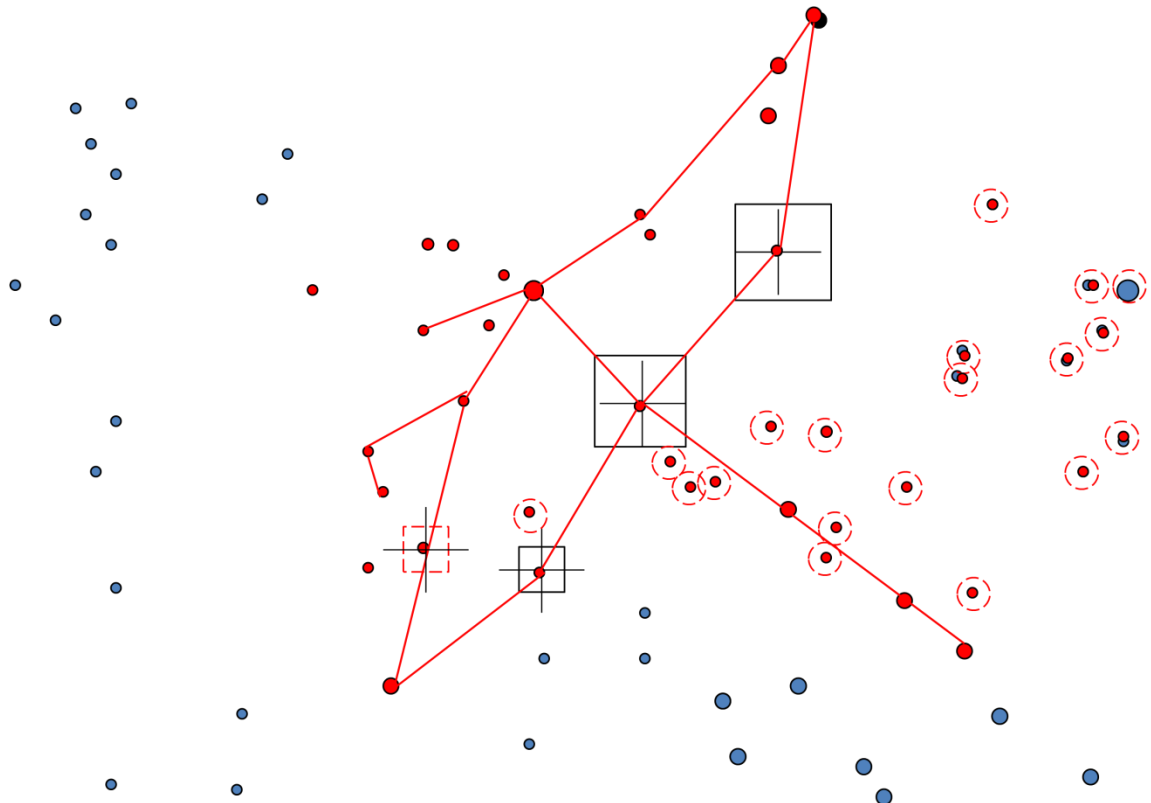
....matching the Cosmic Event of July 9, 2009



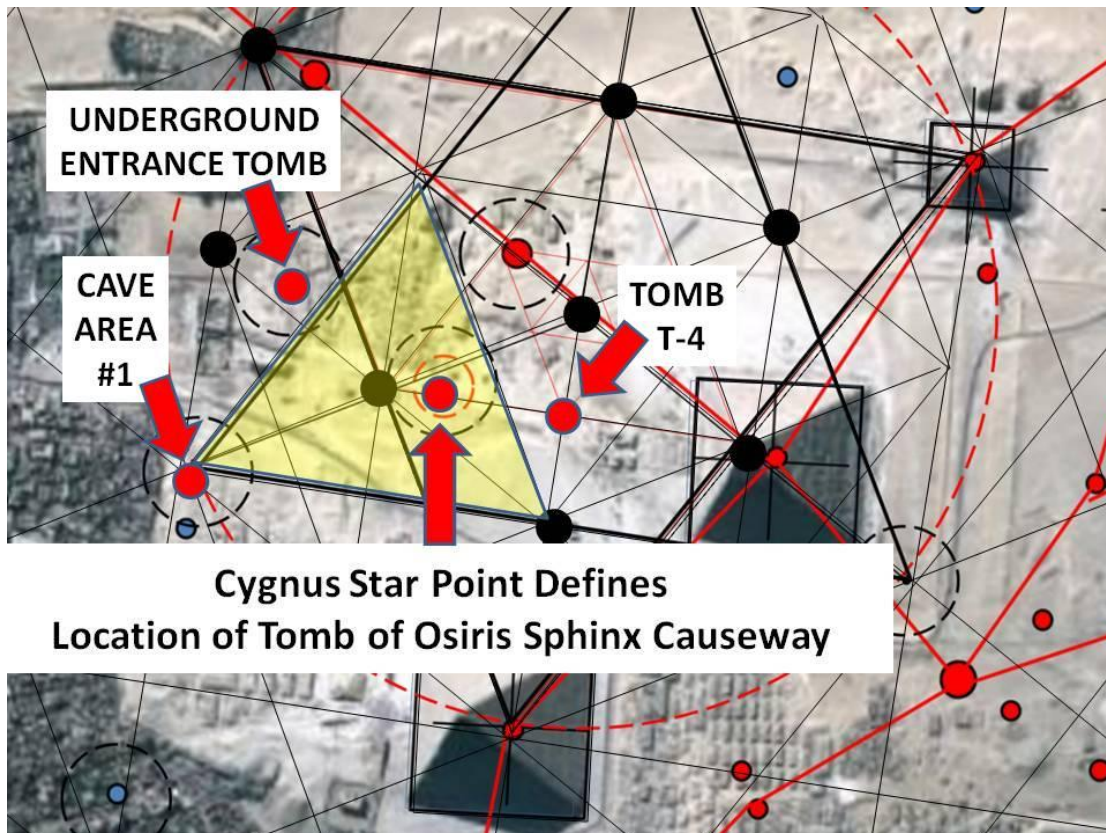
This Cosmic Event specifies that the planets of Earth, Venus and Mars match the apex points of each pyramid

And that today

... it represents the true and exact placement format of the Three Pyramids at Giza Plateau, Egypt....



CYGNUS STAR TO GROUND LAYOUT



The Cygnus Star Point Diagram above indicates the existence of several stars ‘resting’ upon the back of the Swan image. Is there significance to this pattern?

These star points have been identified to match specific ‘tomb’ locations on the ground i.e. Tomb of Osiris, possible tomb T-4, Cave Area #1 and a known underground entrance point.

Is there significance to these star pattern location points or merely a coincidence?



Figure 7Figure 8

The 'Rider' of the Swan

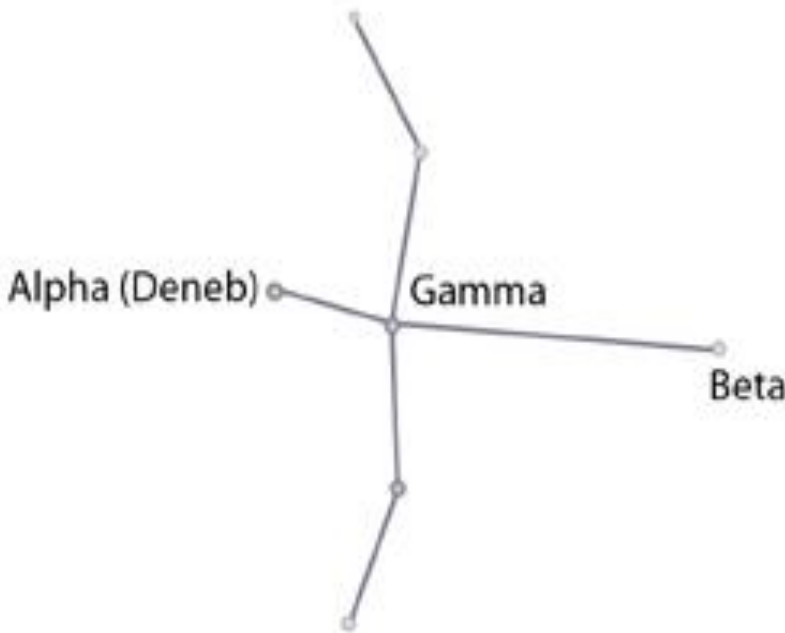
The Greek goddess 'Aphrodite' was often pictured sitting or riding on a variety of animals, particularly birds such as swans or geese.

Figure 7 portrays her riding on a swan, while in Figure 8 she is seated on a goose.

This association with the sky reinforces the existence of Aphrodite Urania, the heavenly goddess who also patroned animals.

In addition, such images also support Aphrodite as the Queen of Heaven, with an important place in the natural world.

**Cygnus (swan)
also (modern) Northern Cross**



The story behind the name: Cygnus is one of the older constellations recognized by early

civilizations.

It was first seen as a bird or a hen, but became associated with several Greek myths involving swans.

The shape of the constellation with a short tail and long neck stretching out suggests a flying swan more than the other birds.



Why is the image shown flying upside down?

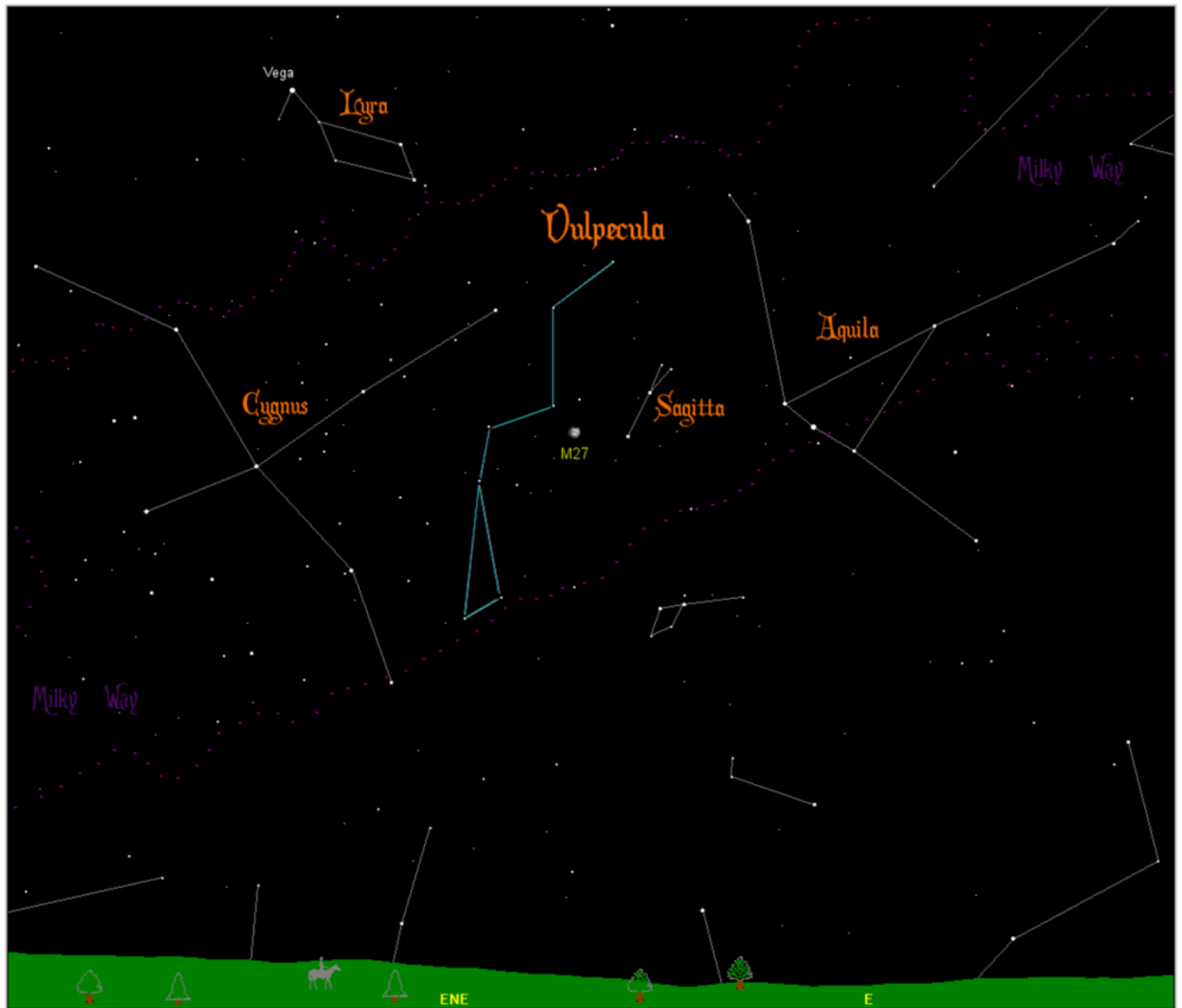
<http://chandra.harvard.edu/photo/constellations/cygnus.html>



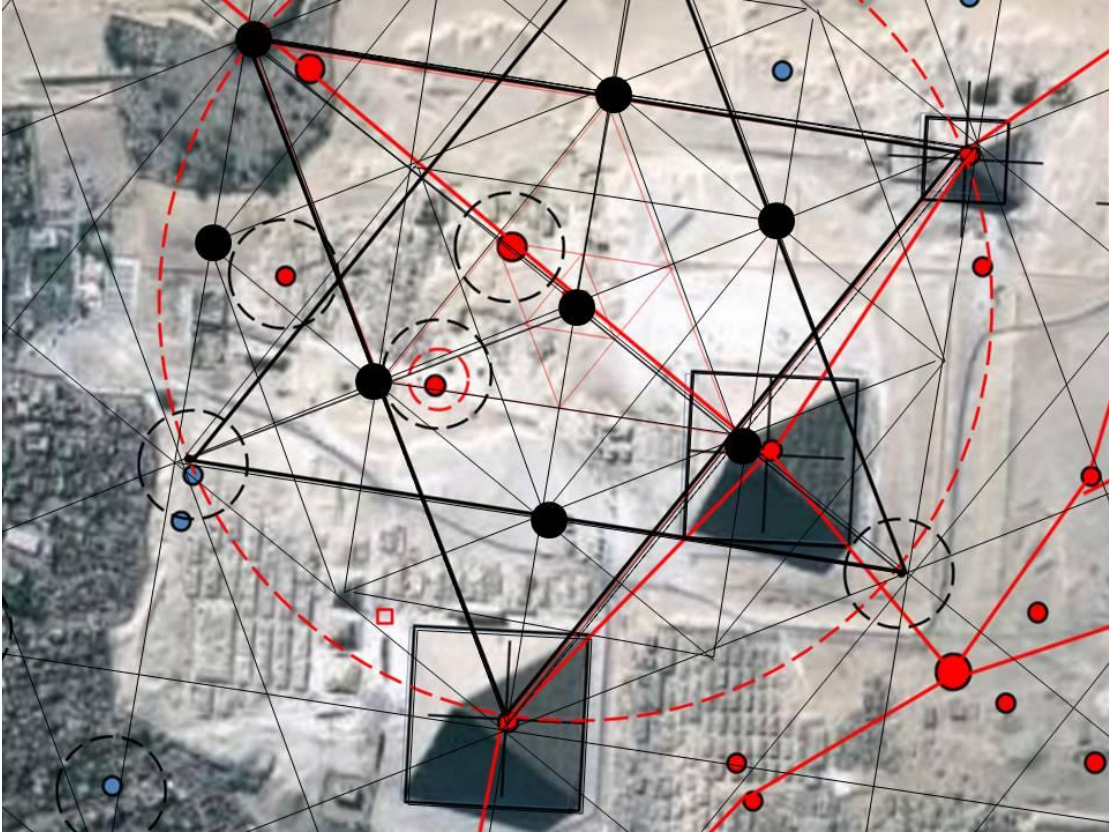
Shown reversed or right side up this night sky image indicates other star points overhead with the “Lyra” (the Harp) constellation. Could a ‘missing’ rider being playing the harp?

**FLYING UPSIDEDOWN (ON ITS BACK)
IS THE CYGNUS (SWAN)
WITH THE THREE PYRAMID STARS AS
SHOWN IN THIS IMAGE BELOW**





Cygnus as we see it in the night sky today with the 'Lyra' Constellation above.



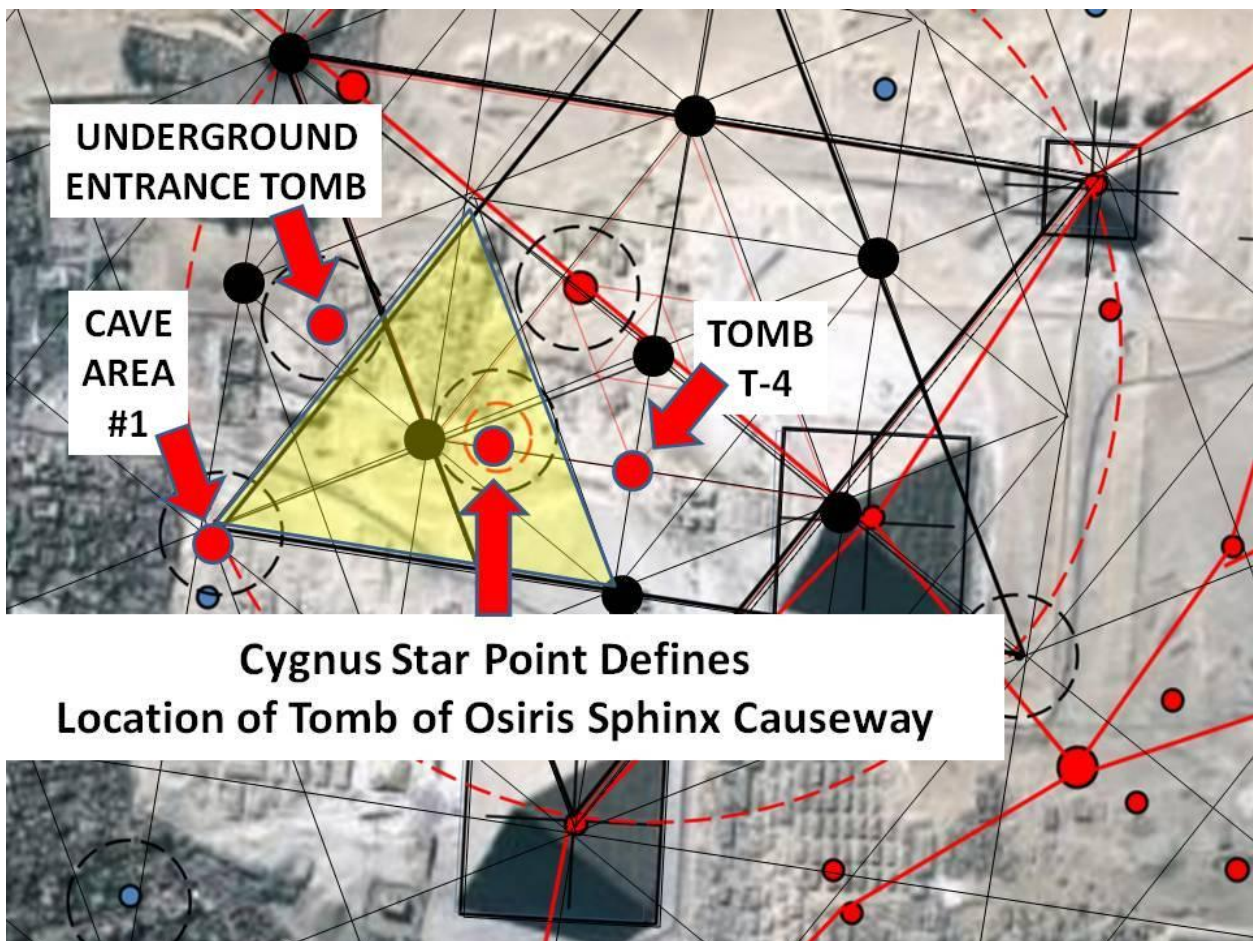
CHAPTER THREE

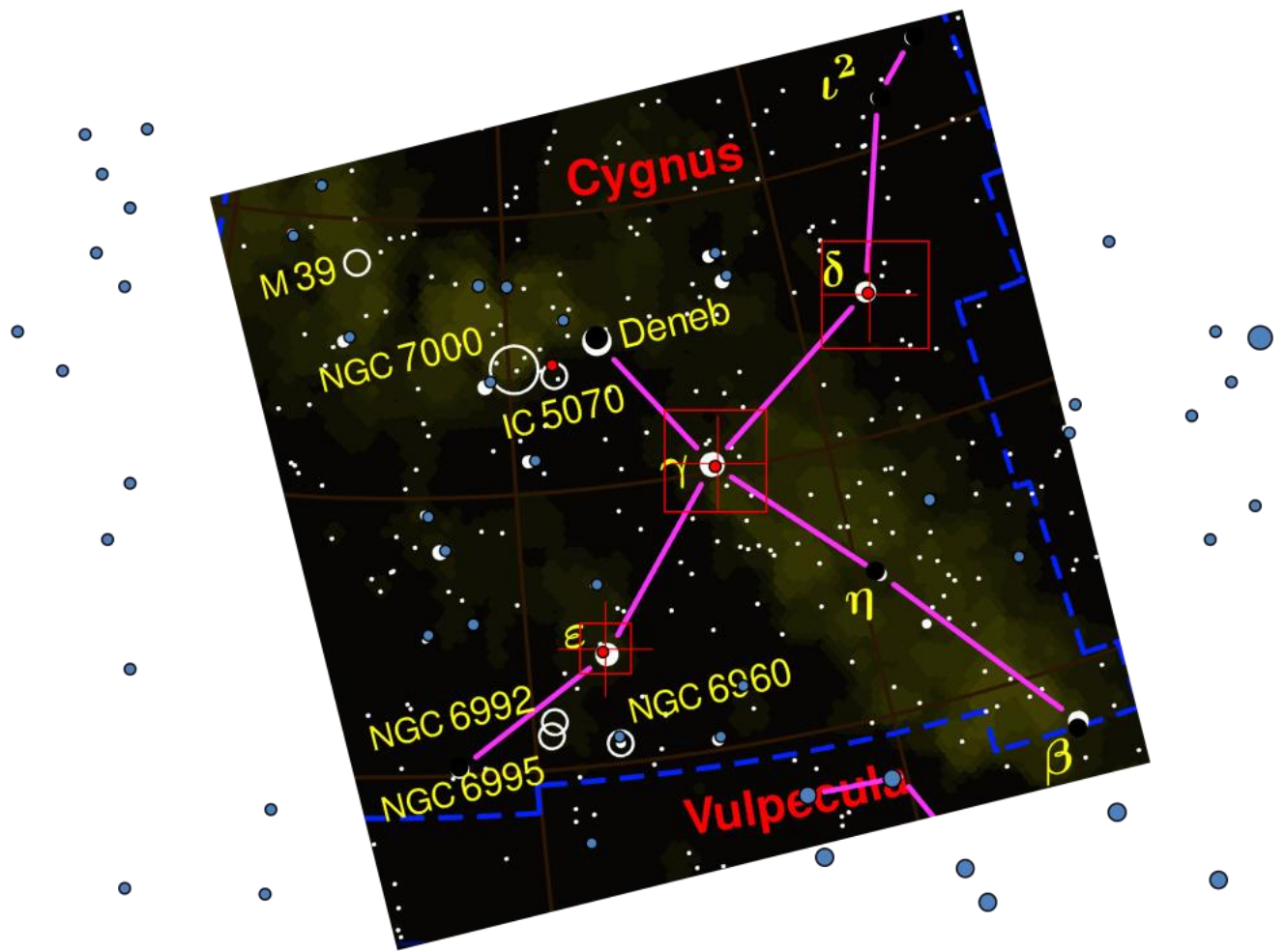
The 'Geometry' of the

Cosmos Defined

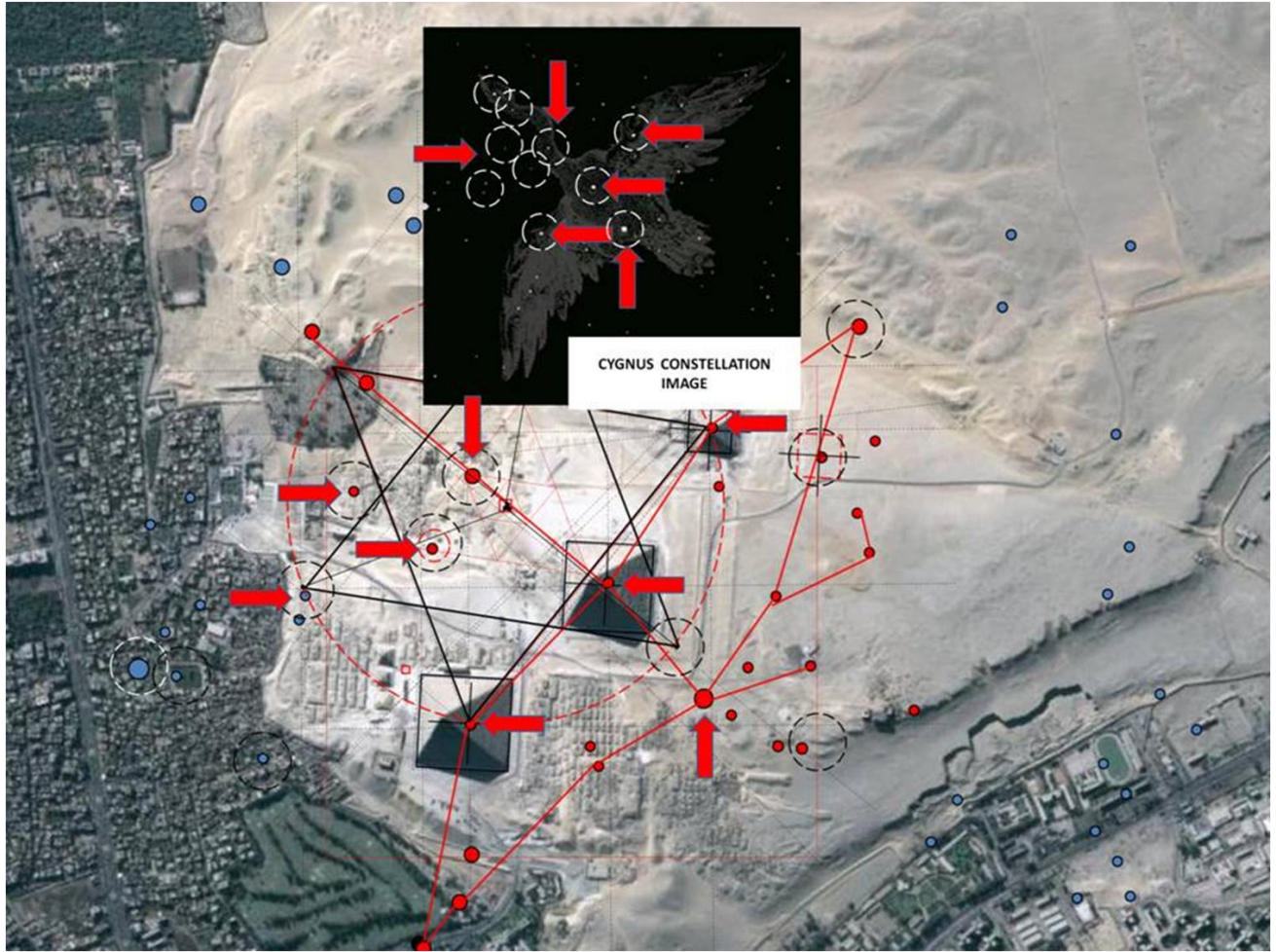


**A combination of Cygnus Constellation
star to ground Giza Plateau location
overlay with Tree of Life Diagram
defines the first areas of discussion as
shown below**



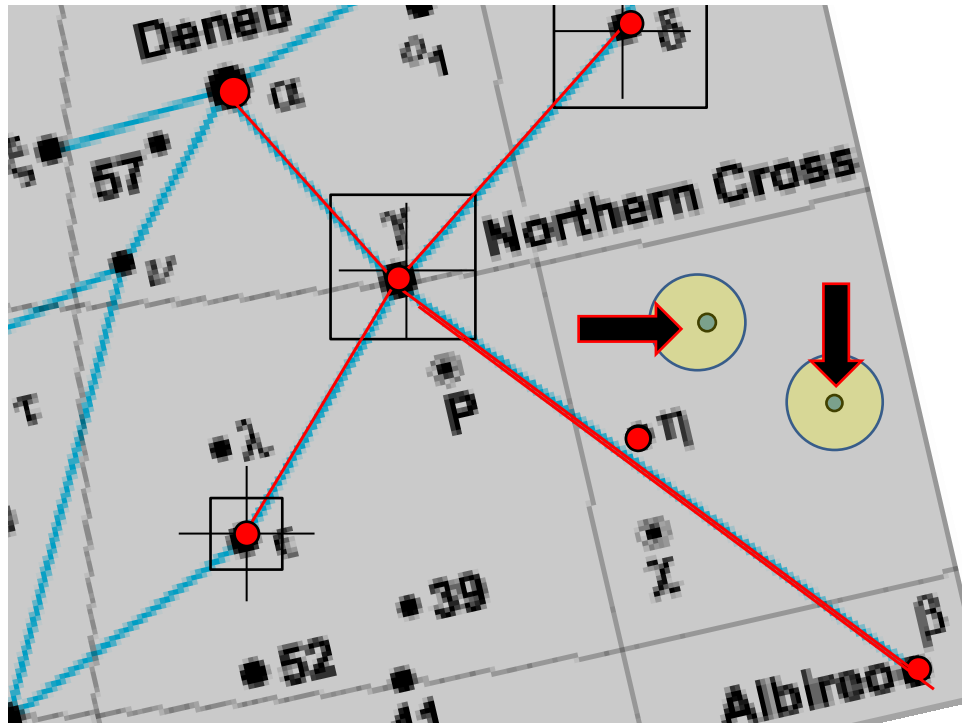


**Giza Pyramids as shown by
astrological analysis reports of
star to ground 'theory'
accepted today.**

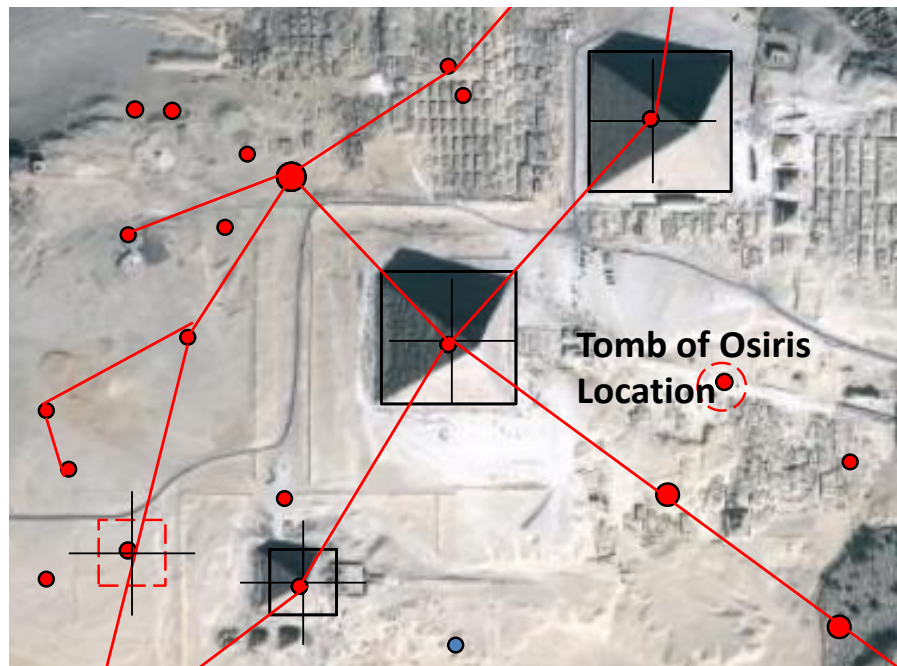


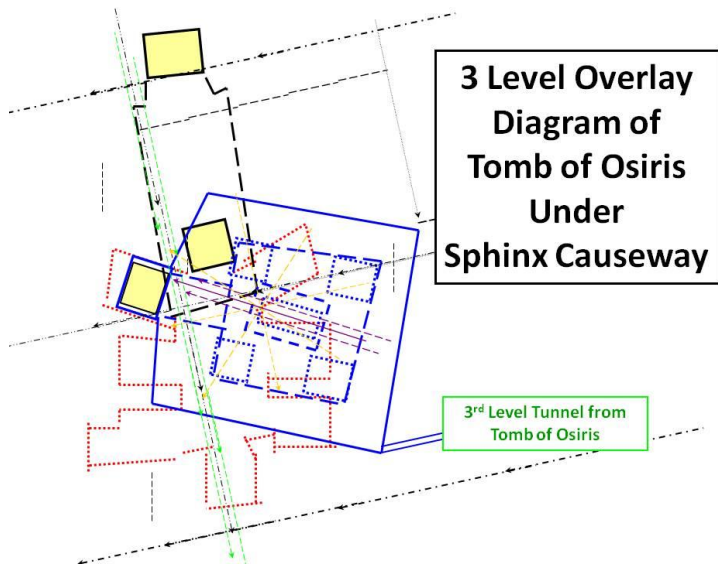
THESE 'STAR TO GROUND' POINTS HAVE NOW BEEN FURTHER IDENTIFIED AS IN THIS IMAGE ABOVE INDICATING THAT ONE PARTICULAR STAR POINT MARKS THE 'TOMB OF OSIRIS' PLACEMENT ON THE GROUND.

Are these stars of Cygnus or of the adjacent Constellation of Lyra?



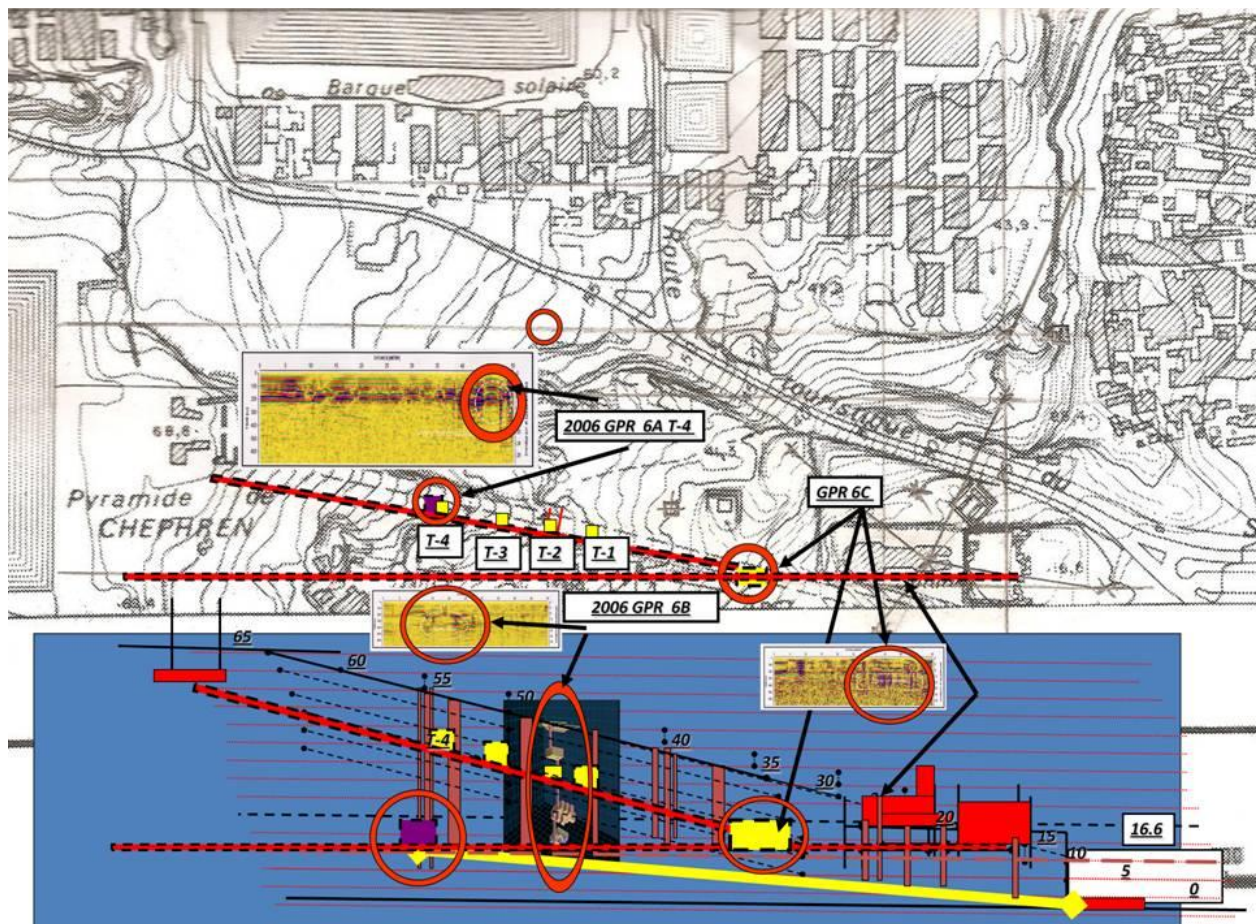
IN EITHER CASE, THE POSITION IN THE NIGHT SKY DEFINES THE EXACT ENTRANCE ON THE GROUND OF THE TOMB OF OSIRIS AS SHOWN

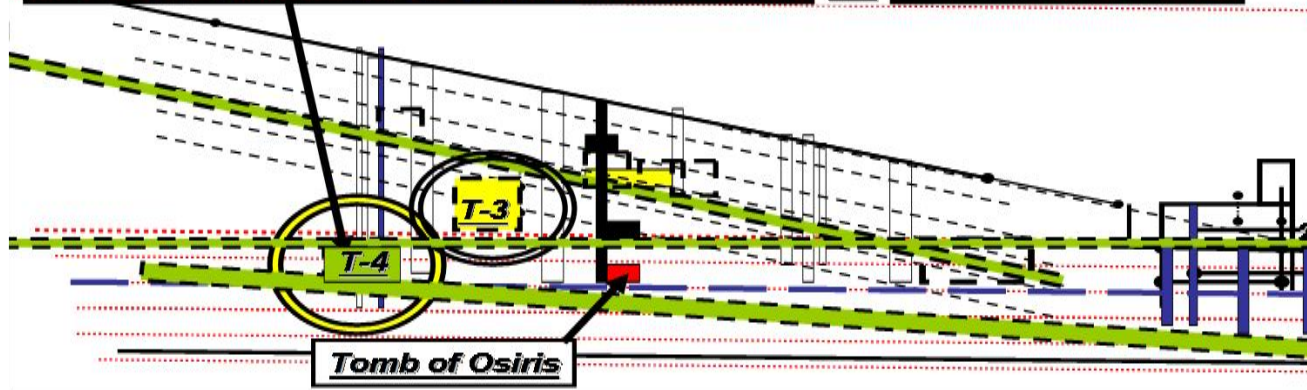
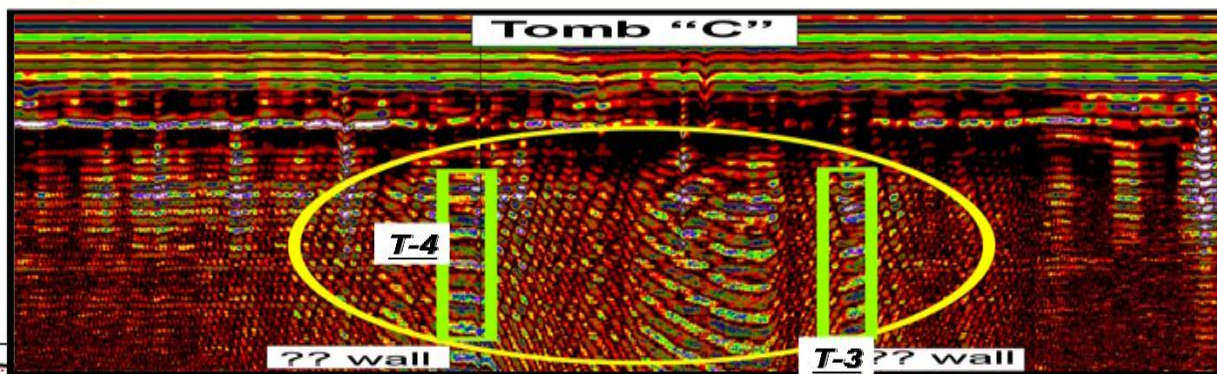
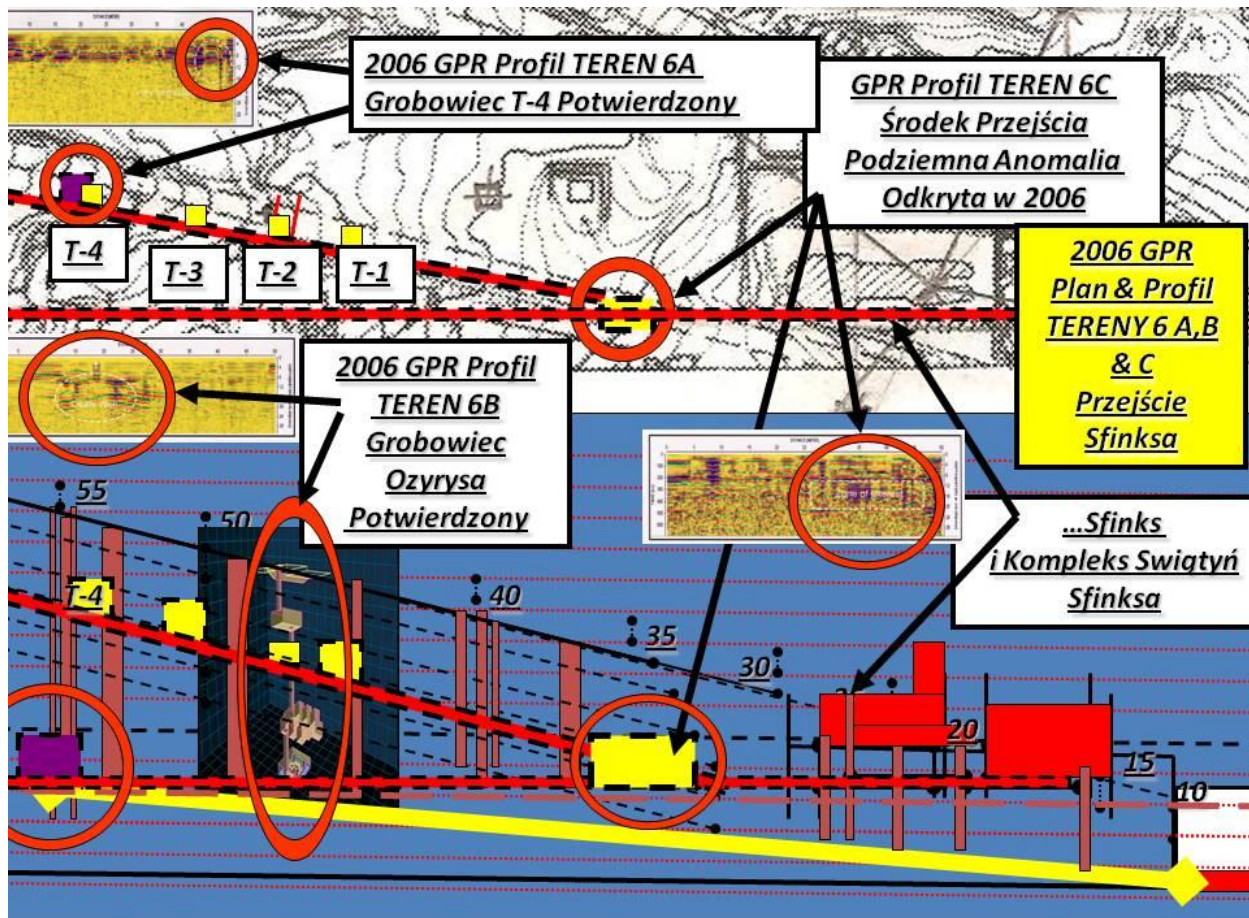




...New evidence now shows how this star to ground placement matches with February 2006 Ground Penetrating Radar Study Report and may just lead to a new update of underground tombs in the area!

Possible New Tomb Map along the Sphinx Causeway now under more investigation!







TABLET OF LOCATION

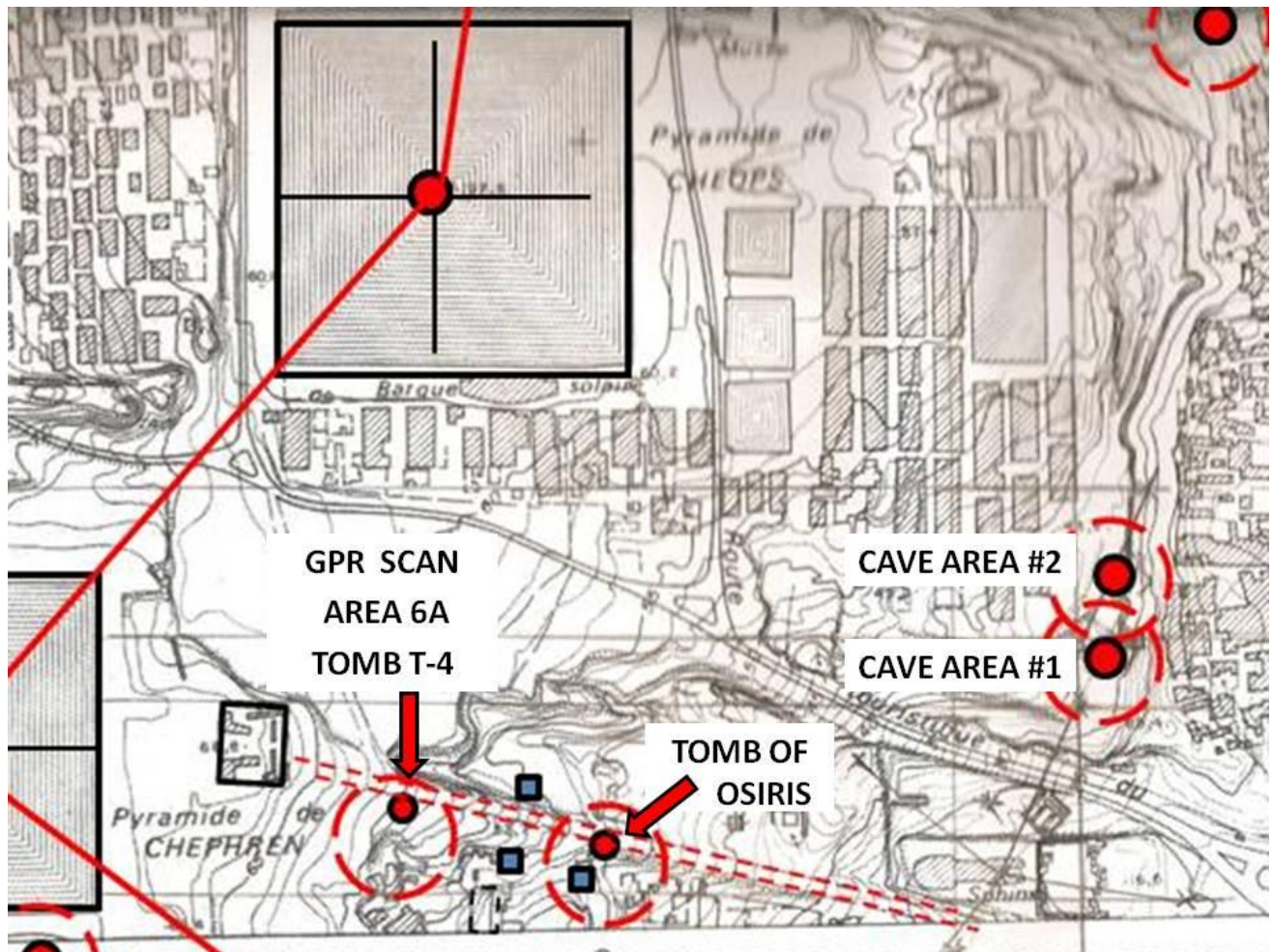
1 – Cave Area #1 Cleanup In Progress

2 – Cave Area #2 Future Investigation

3 – Tomb of Osiris Area #1

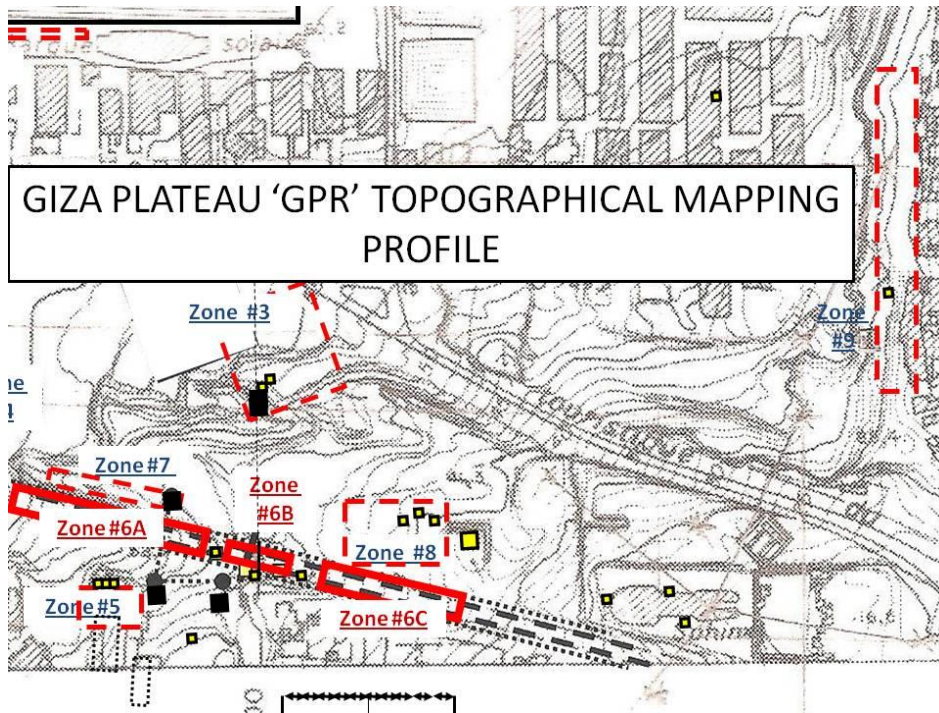
4 – GPR 6A – Tomb T-4

5 – 10 Other sites to be discussed later

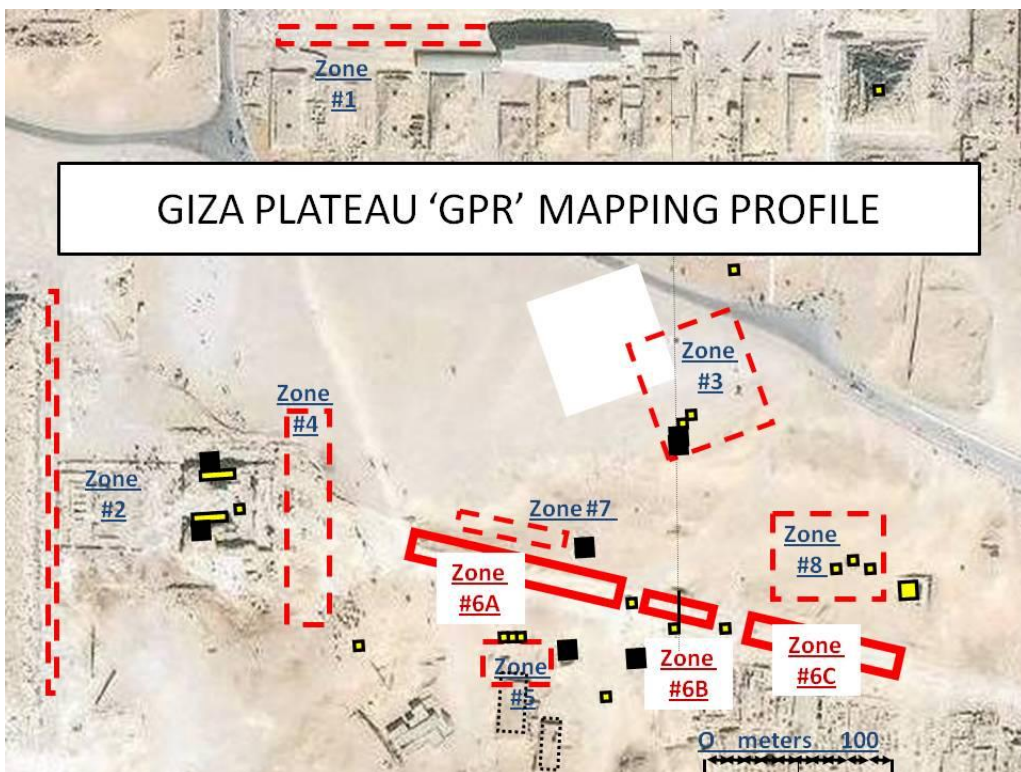


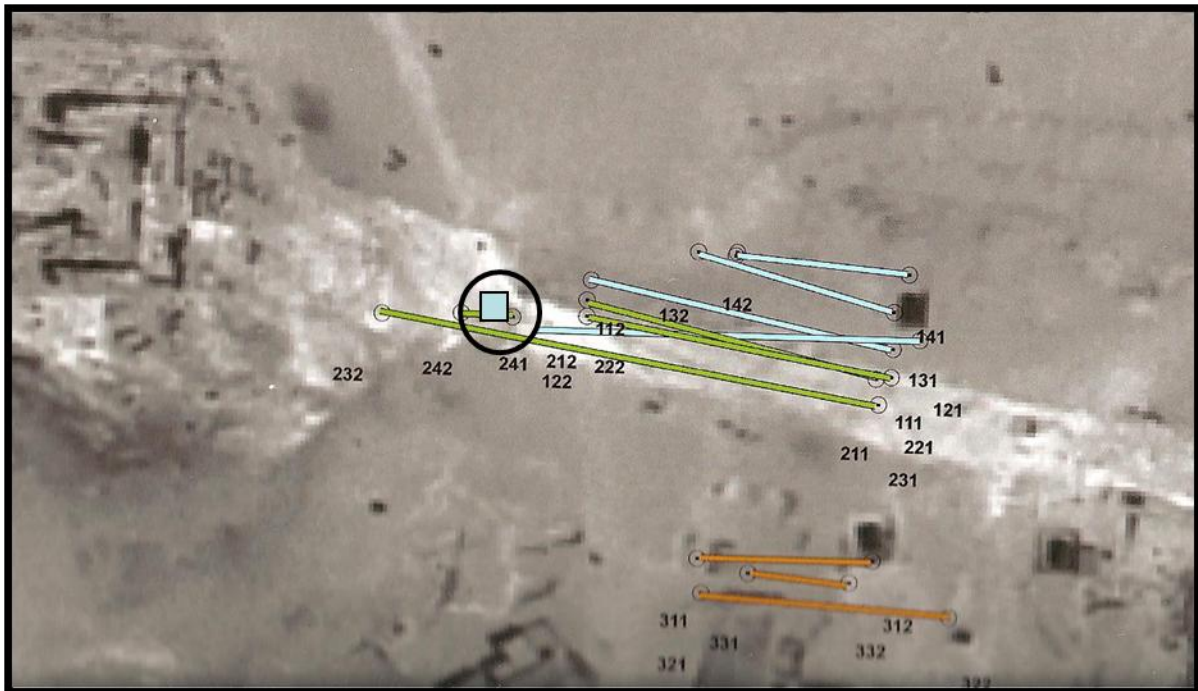
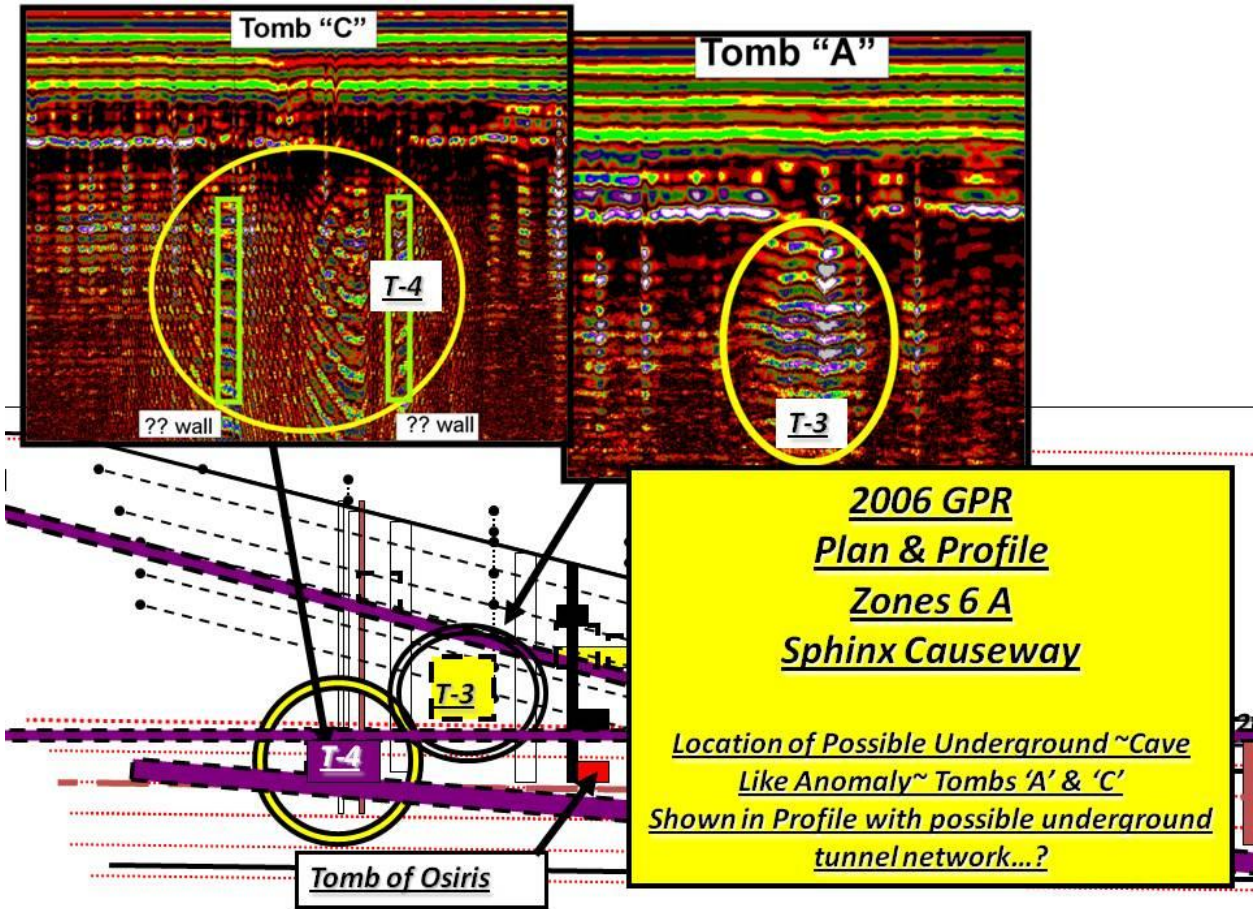
Topographical map of the Giza Plateau area indicating the location of the 2006 Ground Penetrating Radar (GPR) scans performed in February 2006.

Area 6A is of great interest as the star to ground map indicates a possible tomb identified in the report as T-4.

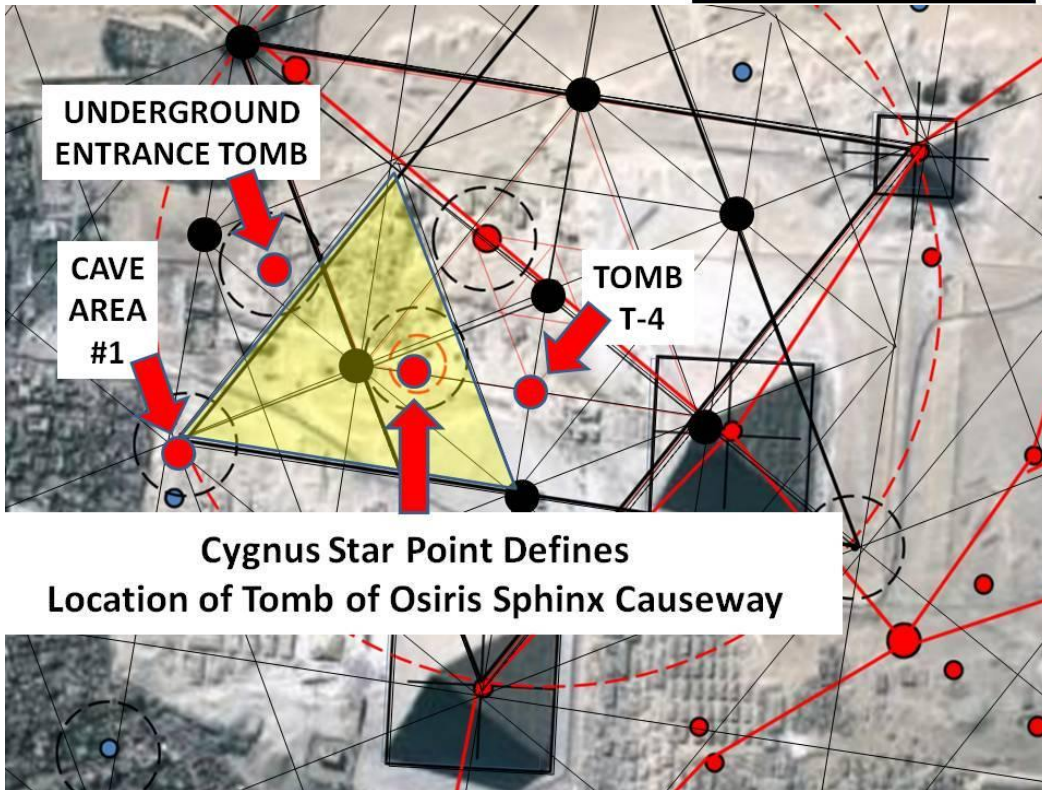
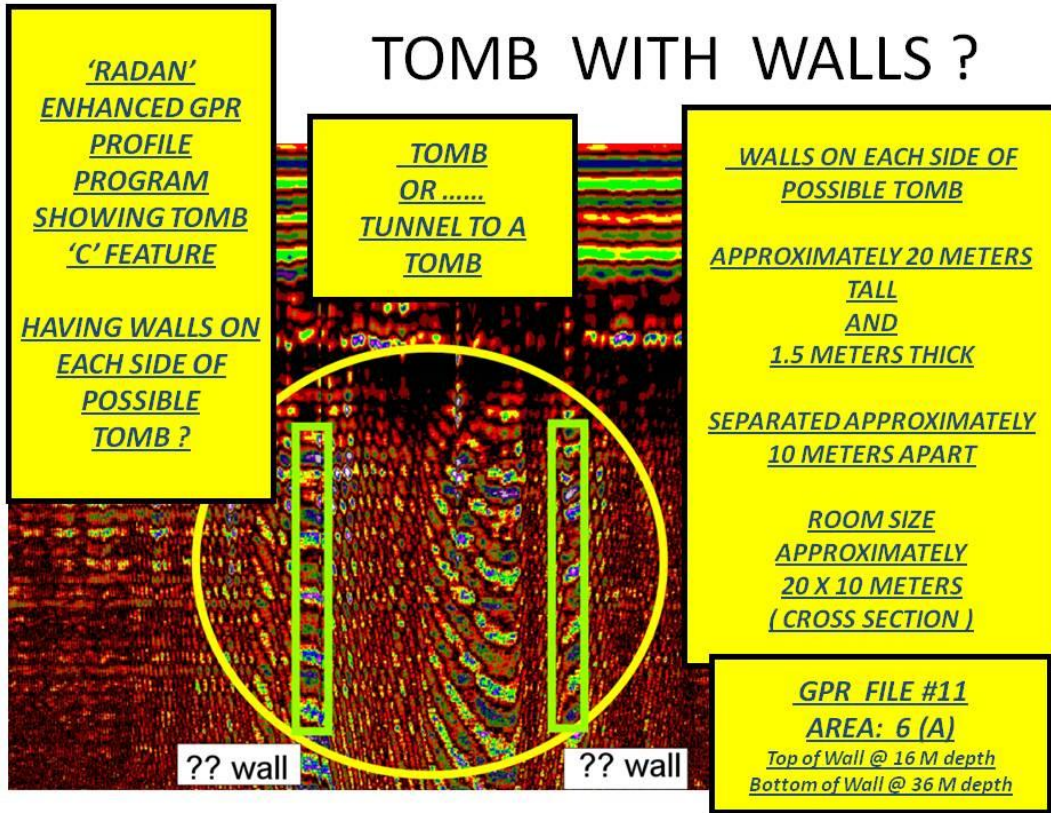


2006 GPR SCAN LOCATION MAPS

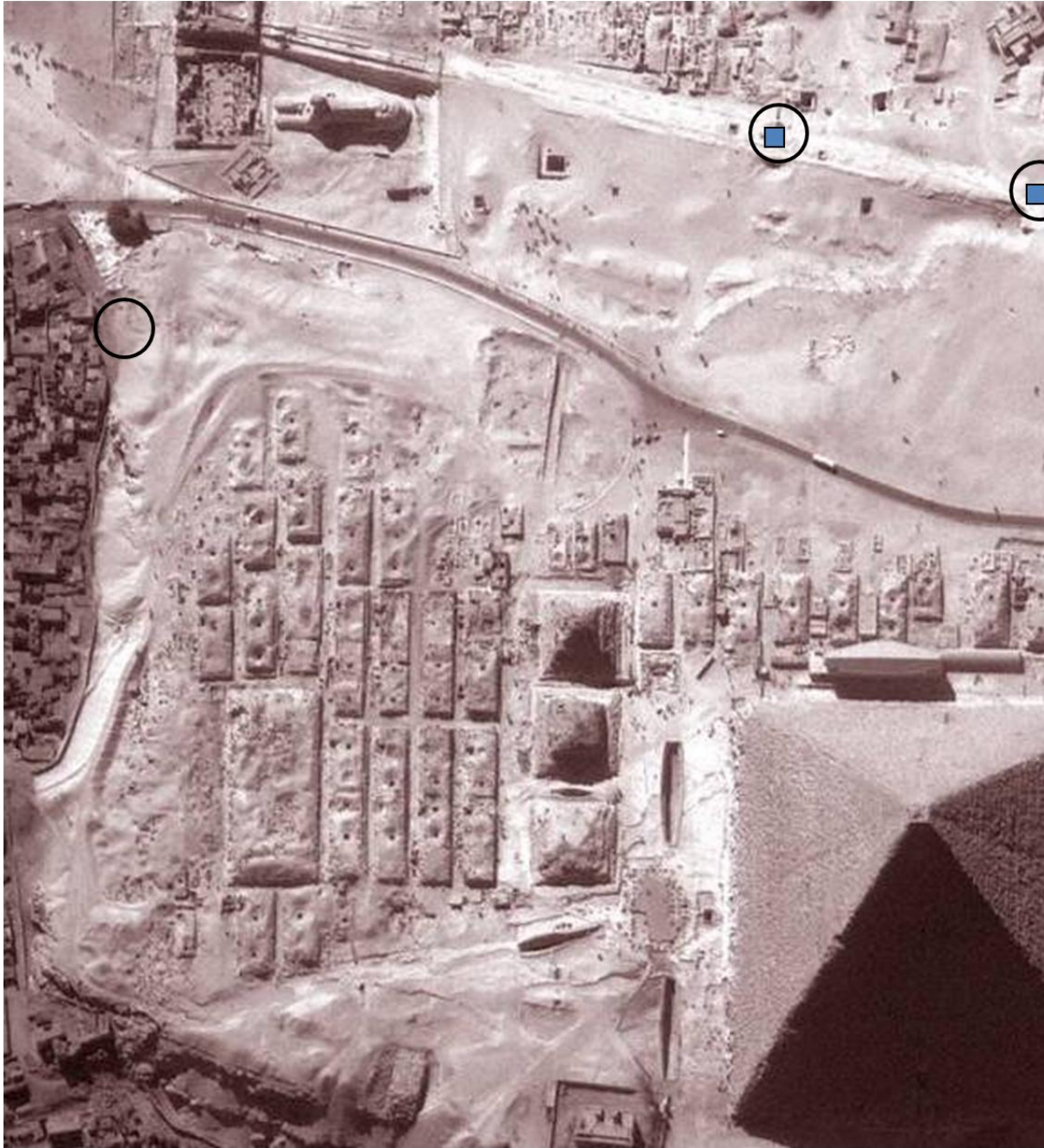




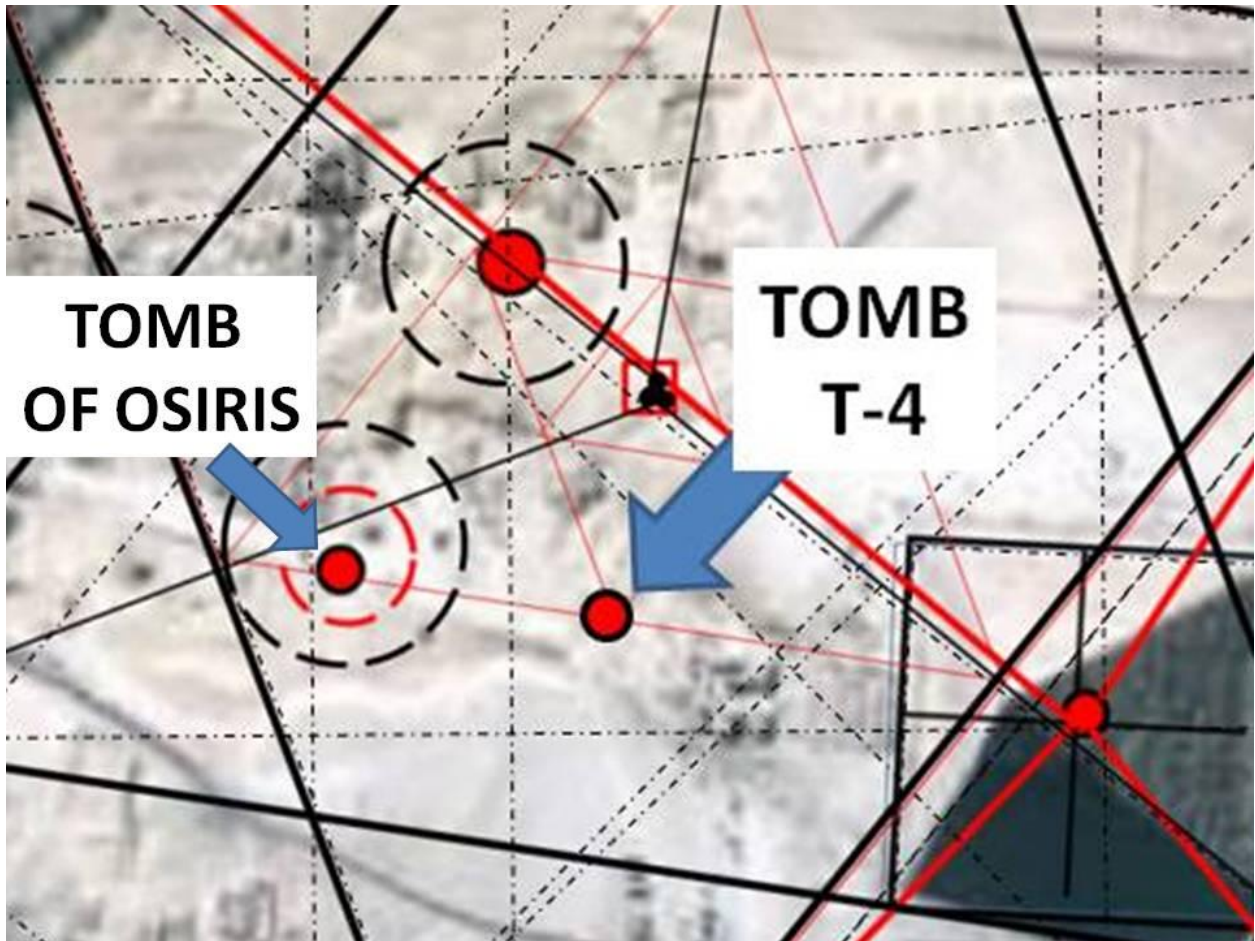
TOMB WITH WALLS ?



...AREA OFT-4....DEFINED...

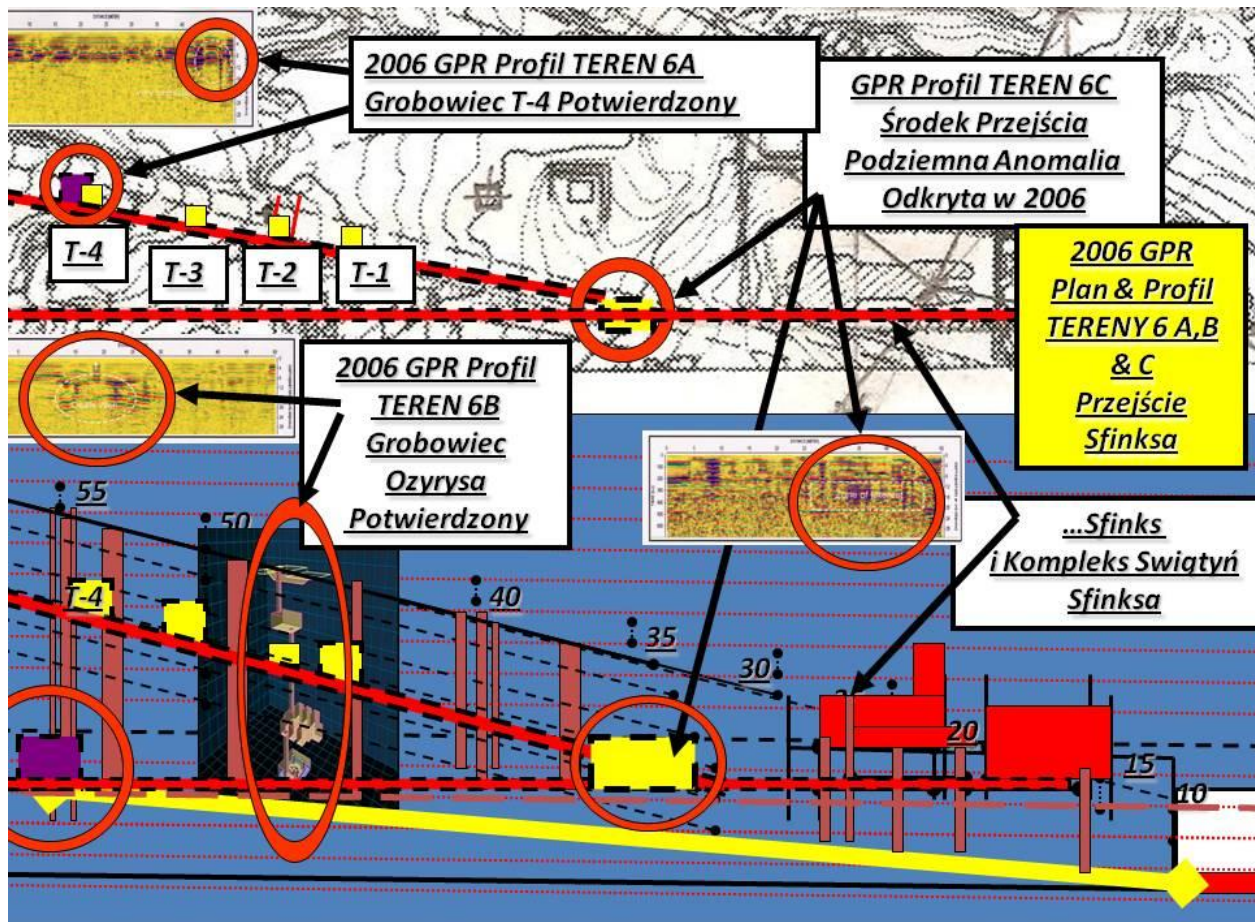


**THE TWO STAR POINTS OF CYGNUS
DEFINING THE LOCATION OF KNOWN
AND POSSIBLY A NEW TOMB**



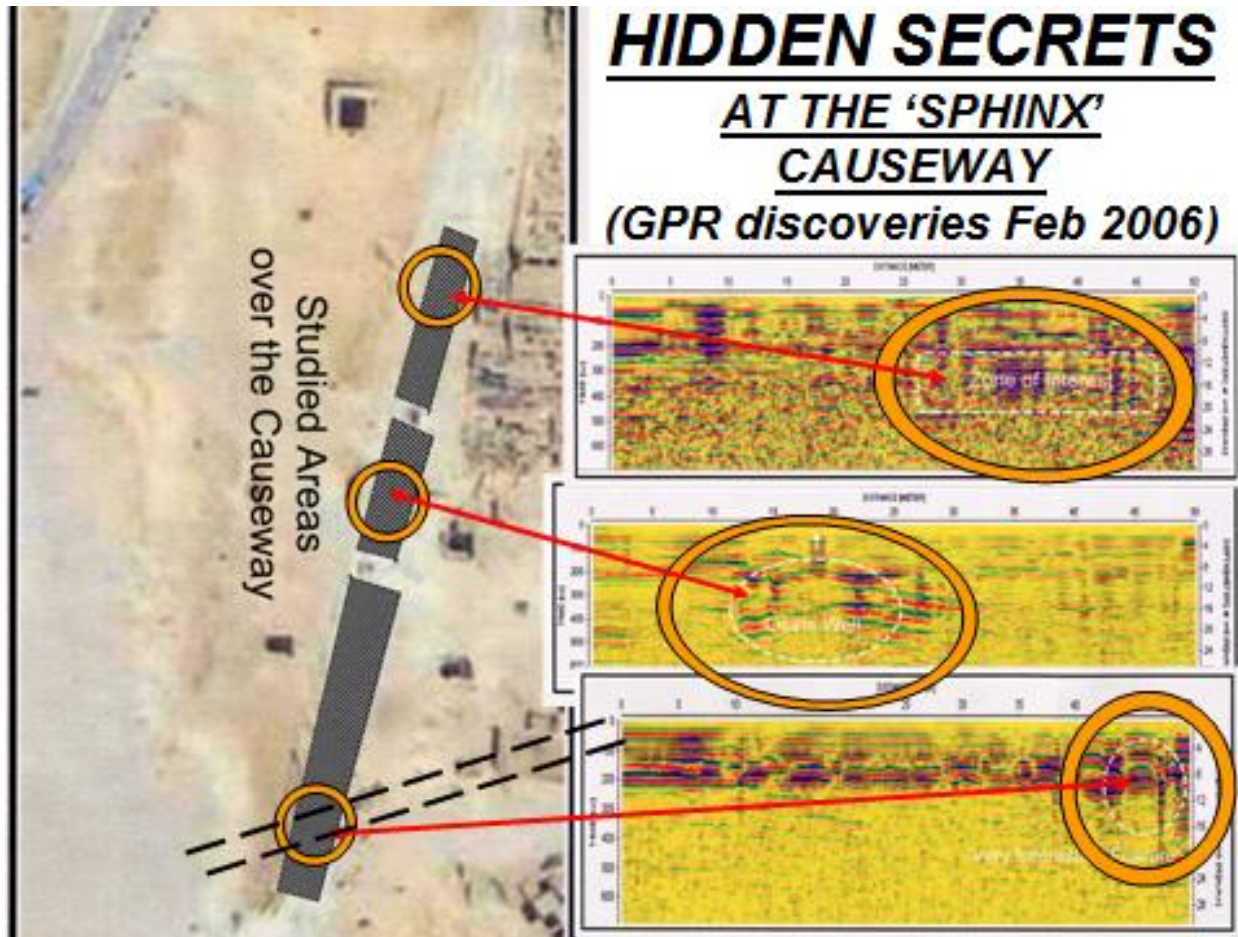
Is there a connection to the Tomb of Osiris and the possible Tomb T-4?

GPR scans, star map associations and sacred geometry appear to show some kind of correlation.

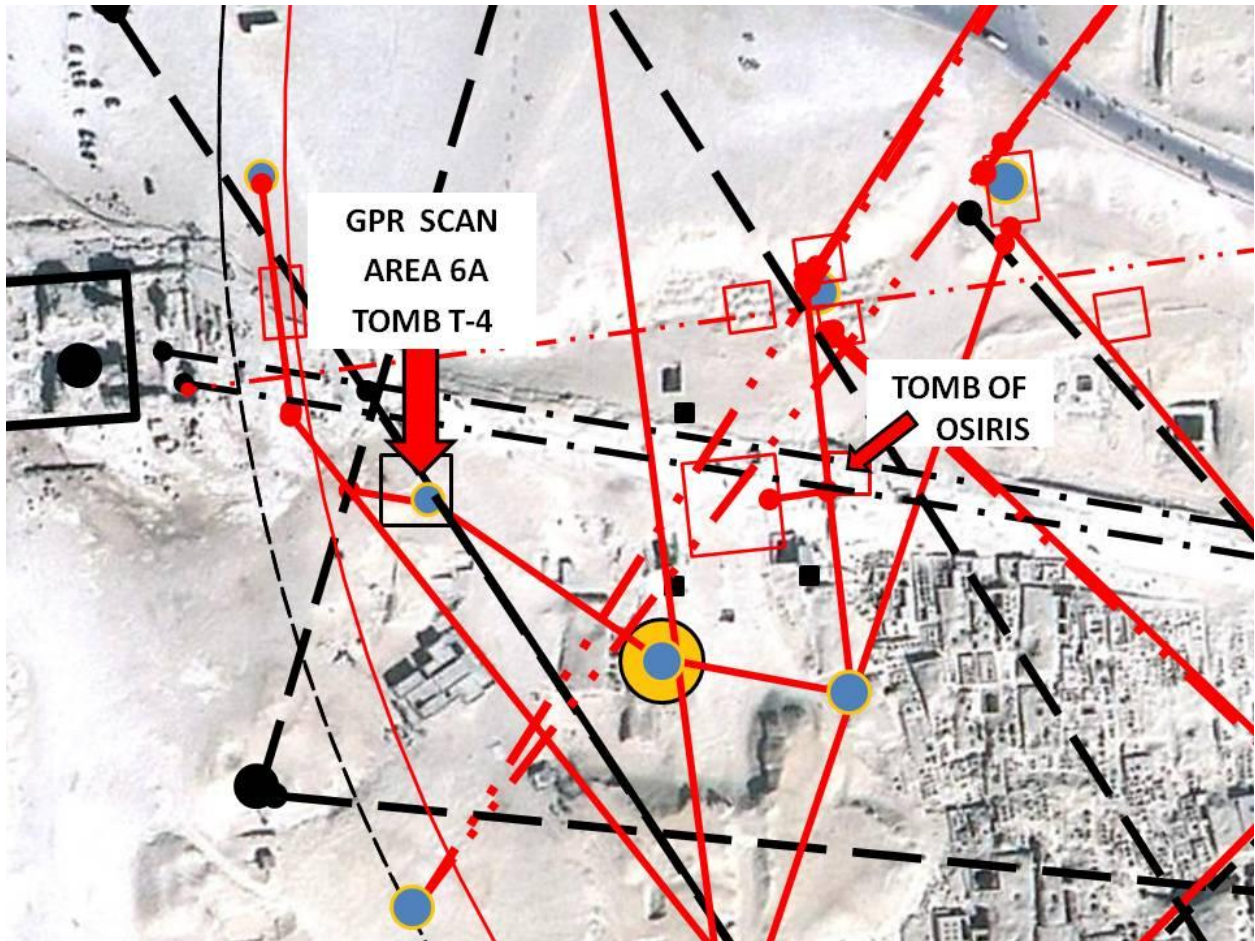


In the diagram above there appears to be a link concerning an underground tunnel system.

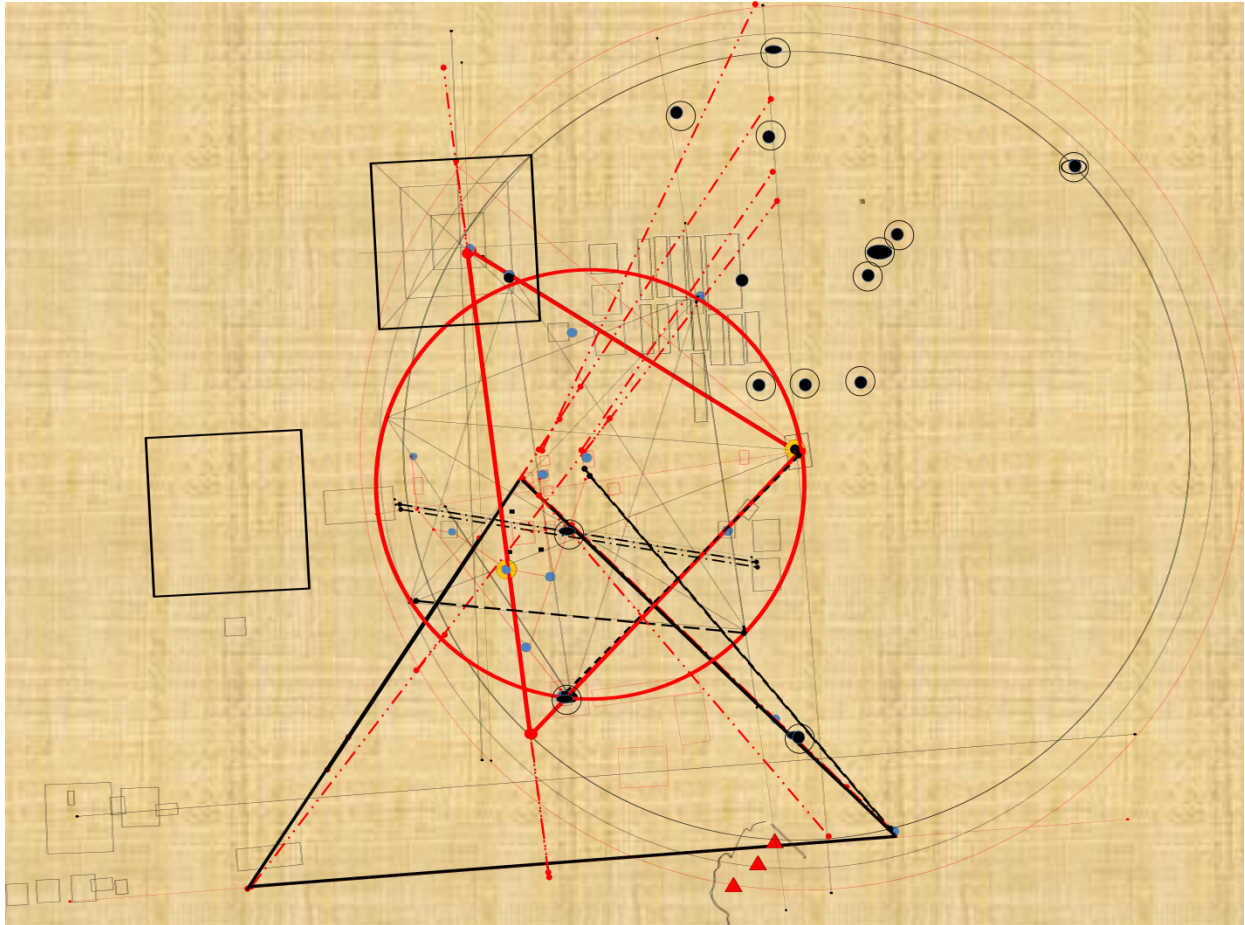
Does it exist and is there any current information about it?



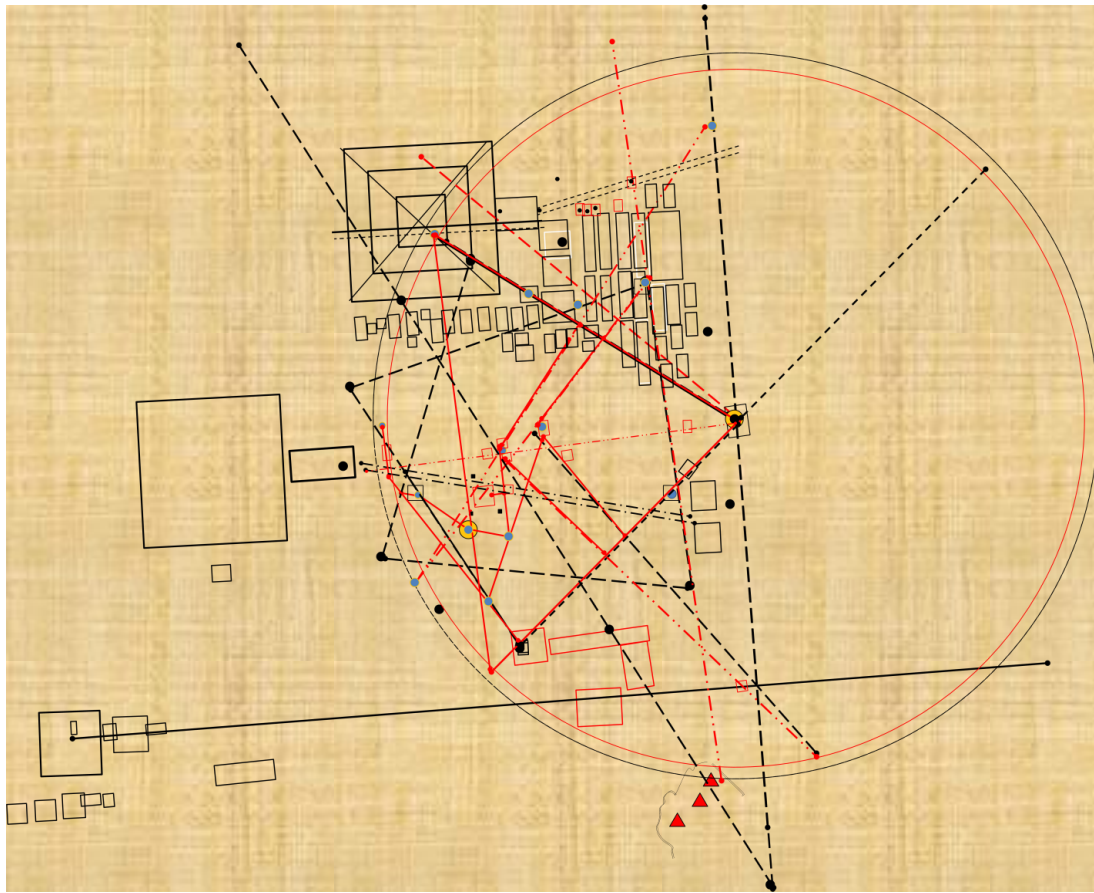
**THE 2006 GRP SCANS INDICATE THAT
SOMETHING IS IN THE LOCATION
DEFINED BY CYGNUS STAR POINT.
THE STAR MAP SAYS SOMETHING IS
THERE.
IS THERE ANY OTHER EVIDENCE?**



THE UNDERGROUND GROTO OF THE GREAT PYRAMID LAYOUT PLAN IS SHOWN ABOVE AND WILL BE PRESENTED AS NEW MATHEMATICAL FORMULAS TO INDICATE MANY OTHER TYPE TOMB LOCATIONS AT THE GIZA PLATEAU, EGYPT.



**LOCATING THE HIDDEN
TEMPLES OF
GIZA PLATEAU, EYGPPT
CHAPTER FOUR**



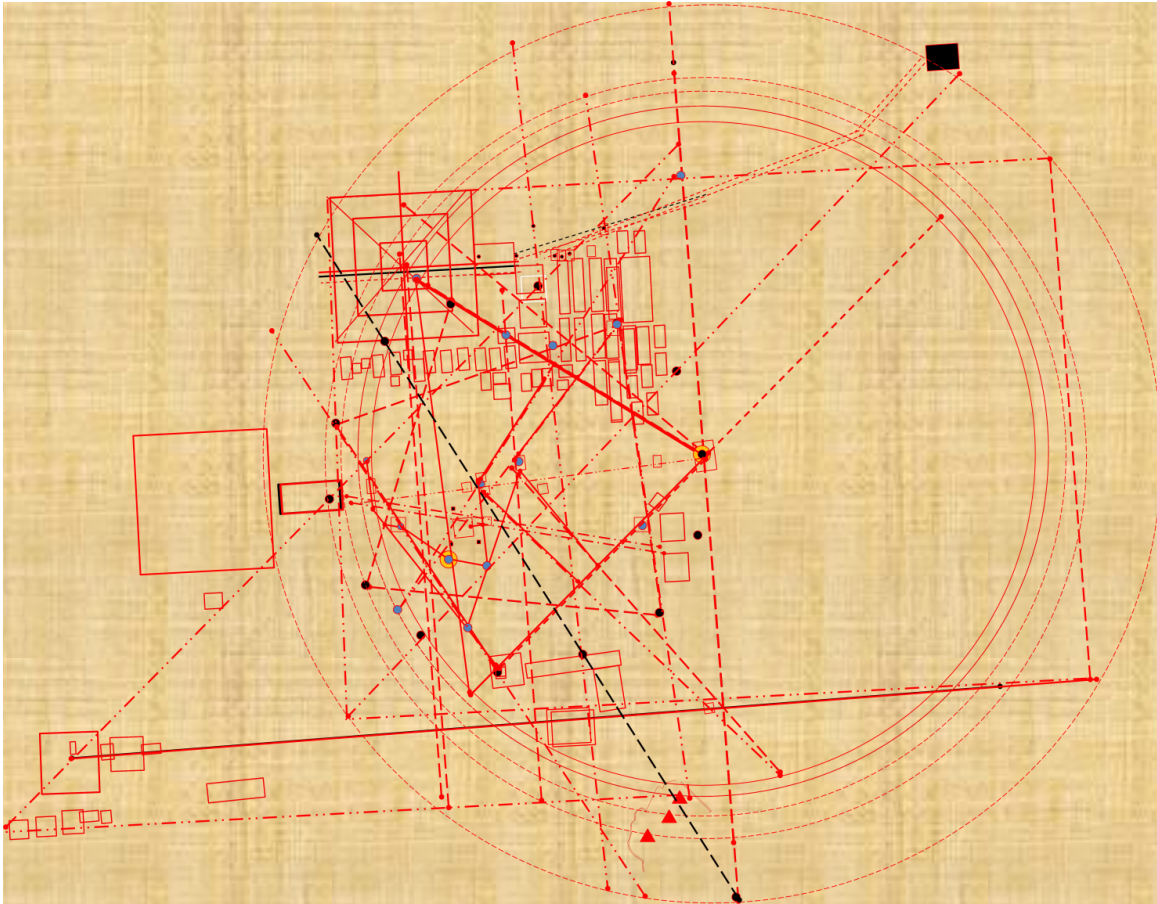
**THE FINAL DESIGN ANALYSIS OF SACRED
GEOMETRIES DEFINES THE GIZA PLATEAU TEMPLE
LOCATIONS as shown above as developed in**

THE FORMULA OF PERFECT GEOMETRY

FORMAT AS SHOWN ABOVE BASED ON A REGULAR 'HEPTAGON' CONFIGURATION

ESTABLISHING GEOMETRY POINTS TO DEFINE VARIOUS LOCATIONS

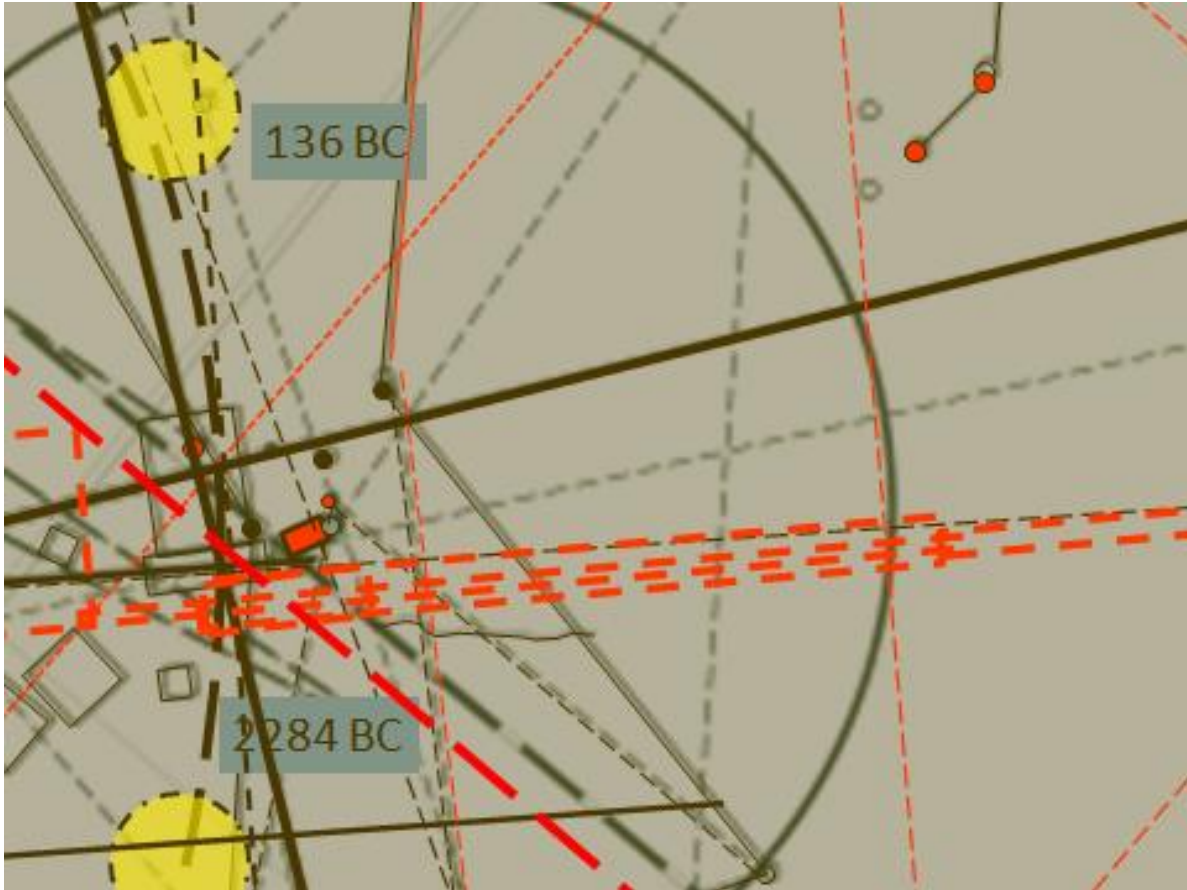
**THE PERFECT PLACEMENT OF TOMB AND
TEMPLE LOCATIONS**



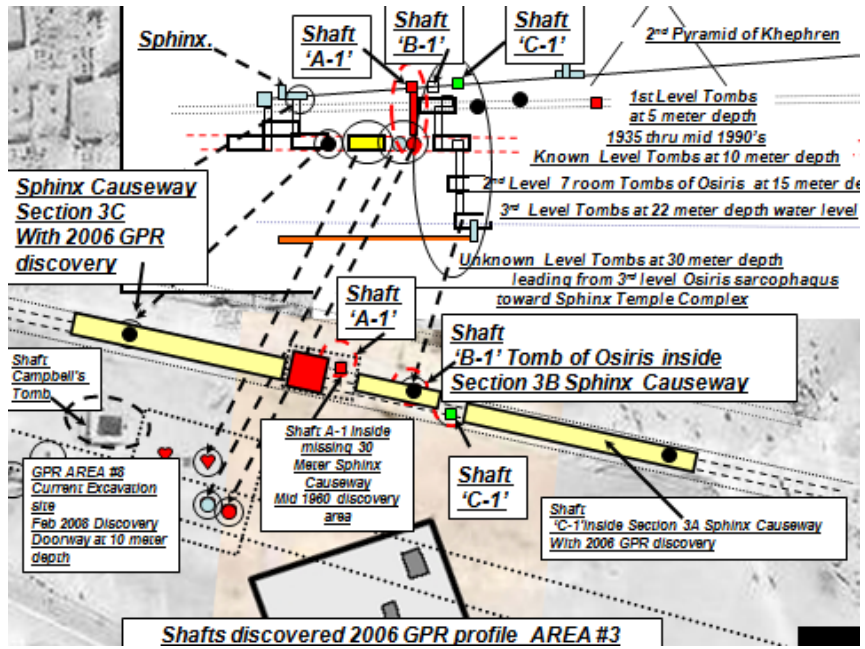
H-e-p-t-a-g-o-n

**THE FINAL DESIGN ESTABLISHED
UNDERGROUND TEMPLE LOCATIONS BASED ON
*THE FORMULA OF PERFECT GEOMETRY***

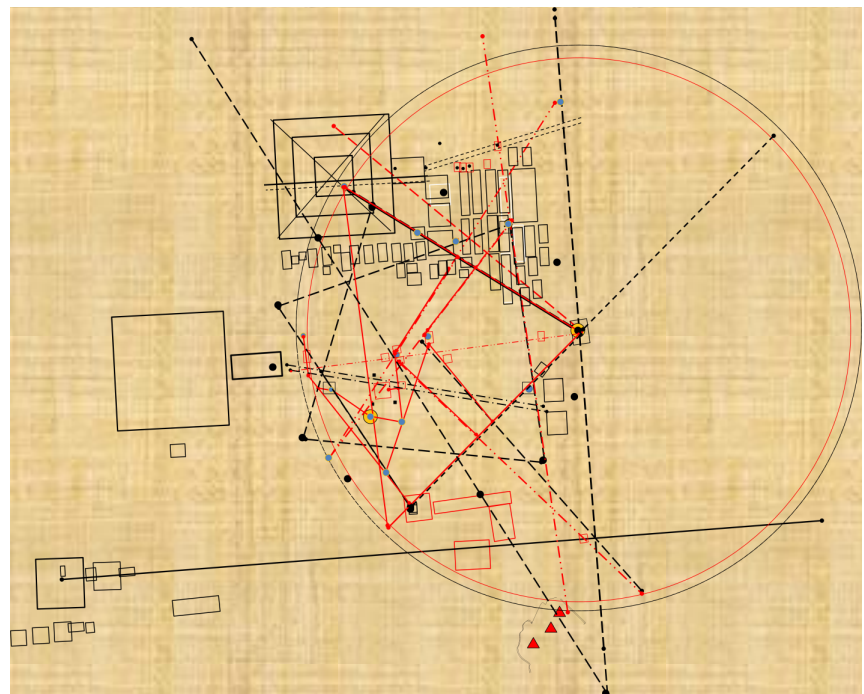
**UNDERGROUND LOCATIONS HAVE BEEN
FIELD VERIFIED IN SOME CASES GIVING
EVIDENCE THAT NEW TOMBS AND TEMPLES
MAY BE DISCOVERED SOON**

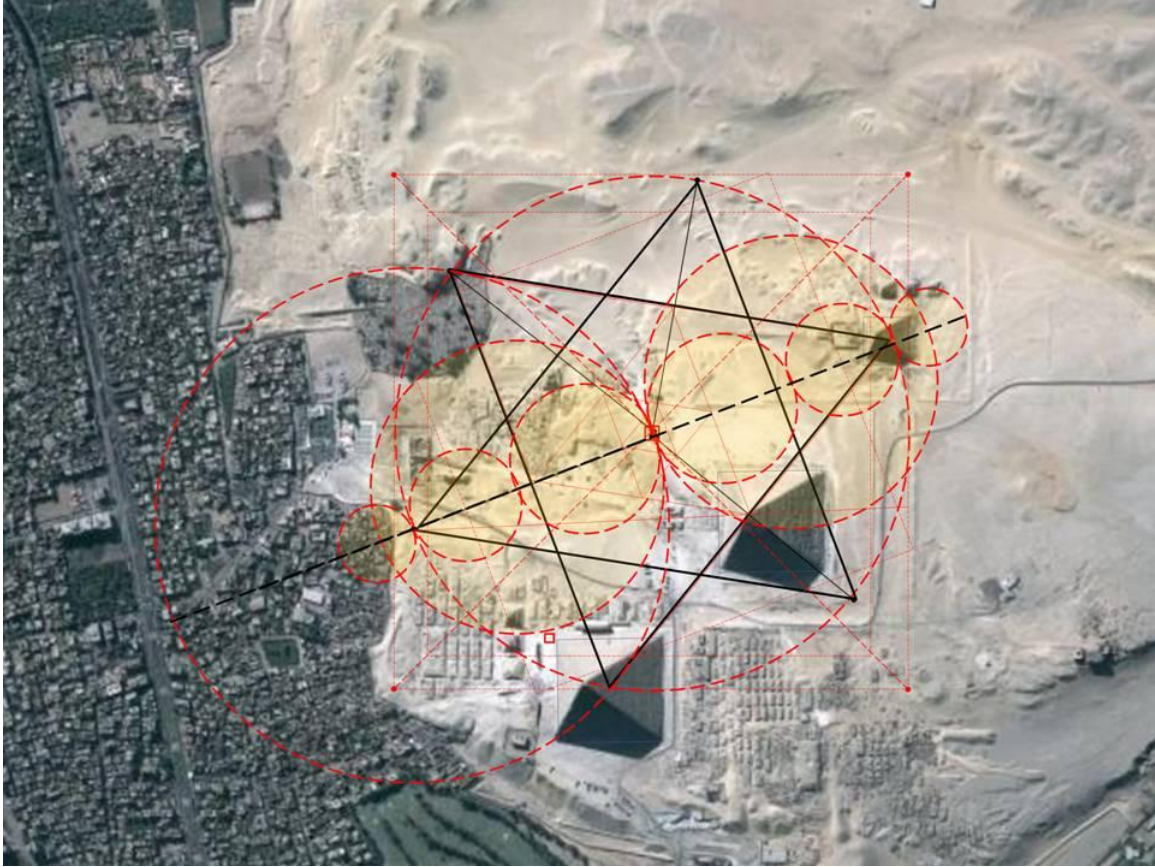


...The underground tombs and temples truly do exist and a better understanding of the geometries about these places will soon to be discovered and exactly as defined in these geometrical formula locations.....



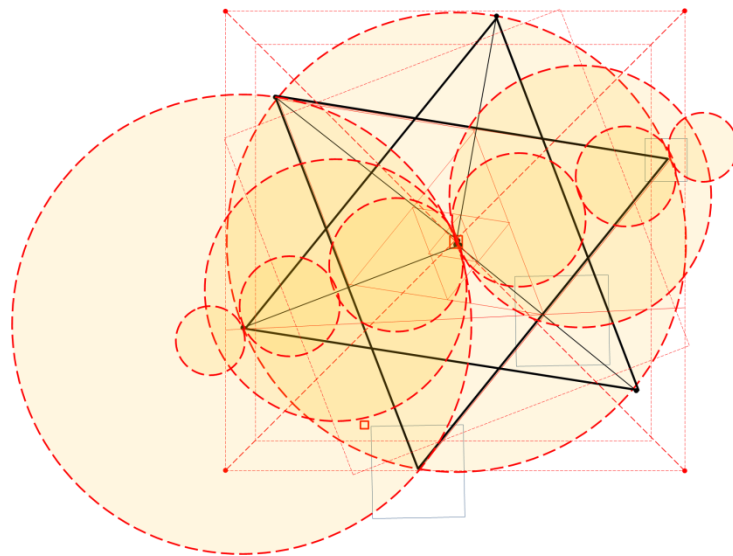
Verification will come from the Geometries as shown ...As Above.... So below

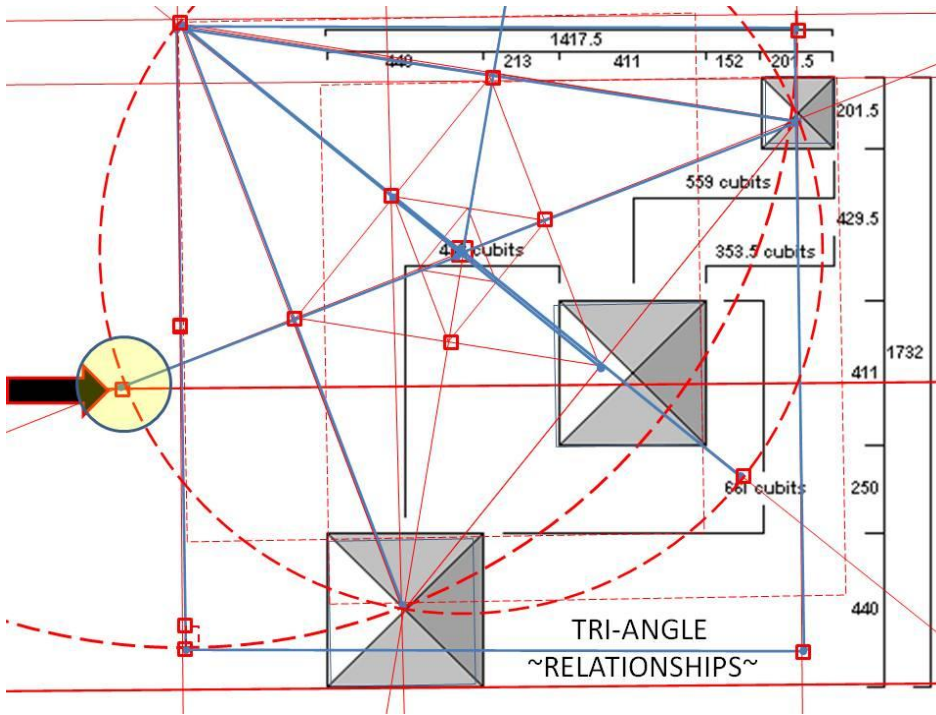




GEOMETRIES OF PERFECTION

CHAPTER FIVE

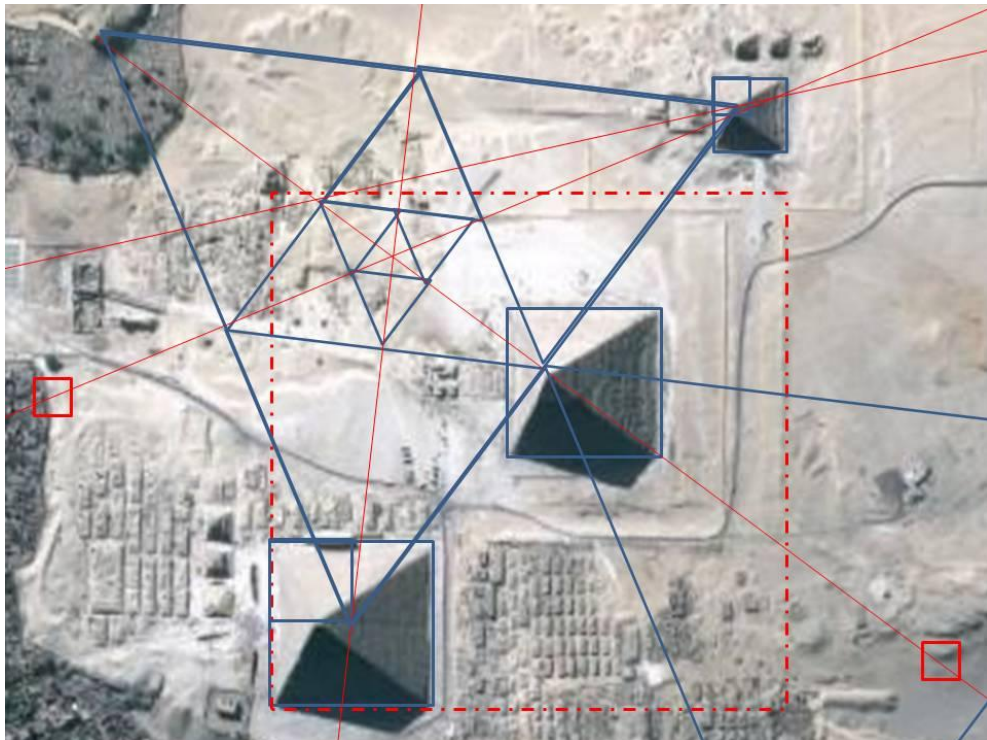


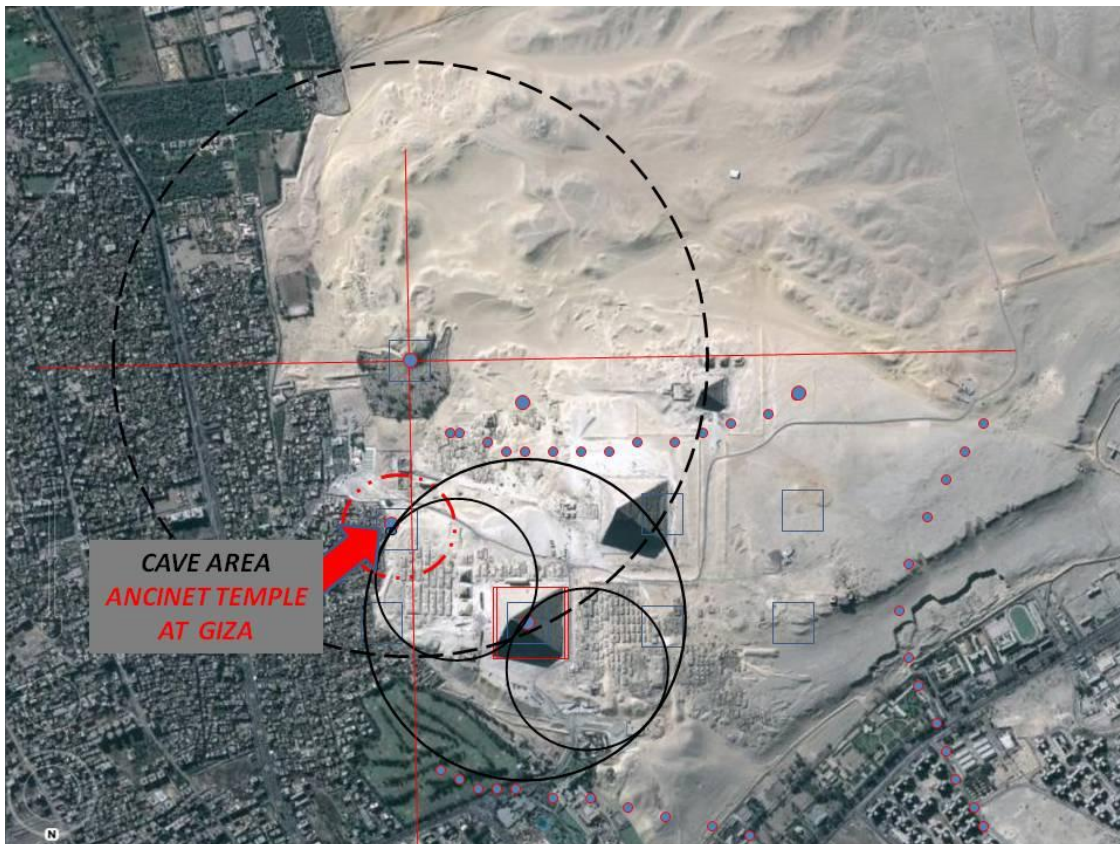
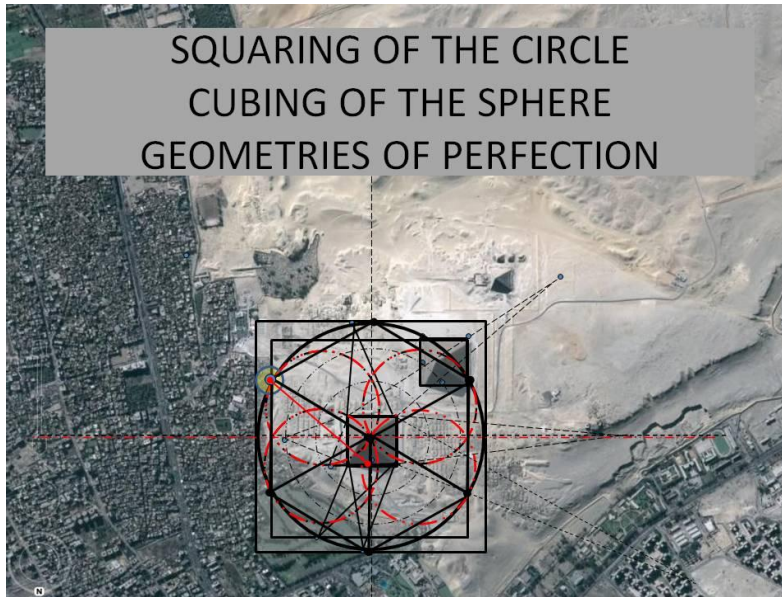


Defining

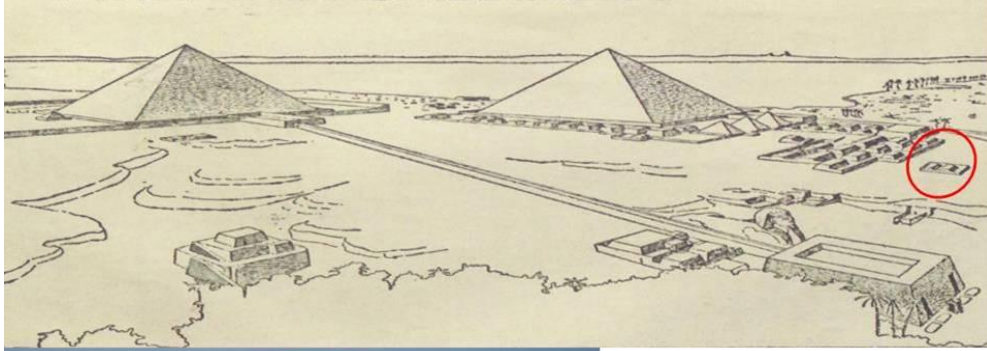
the rotation of Geometry Triangle

Intersect Point shown as 'above~ so below'





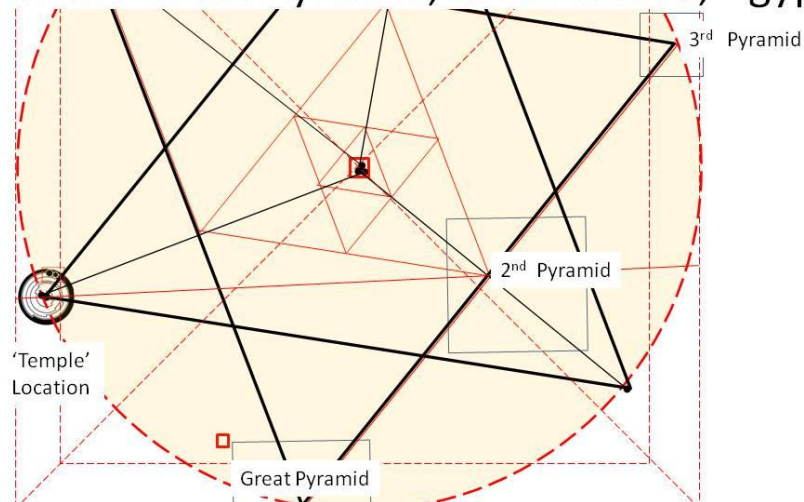
Introduction of the Cave Area Ancient Temple at the Great Pyramid Eastern Mastaba Field

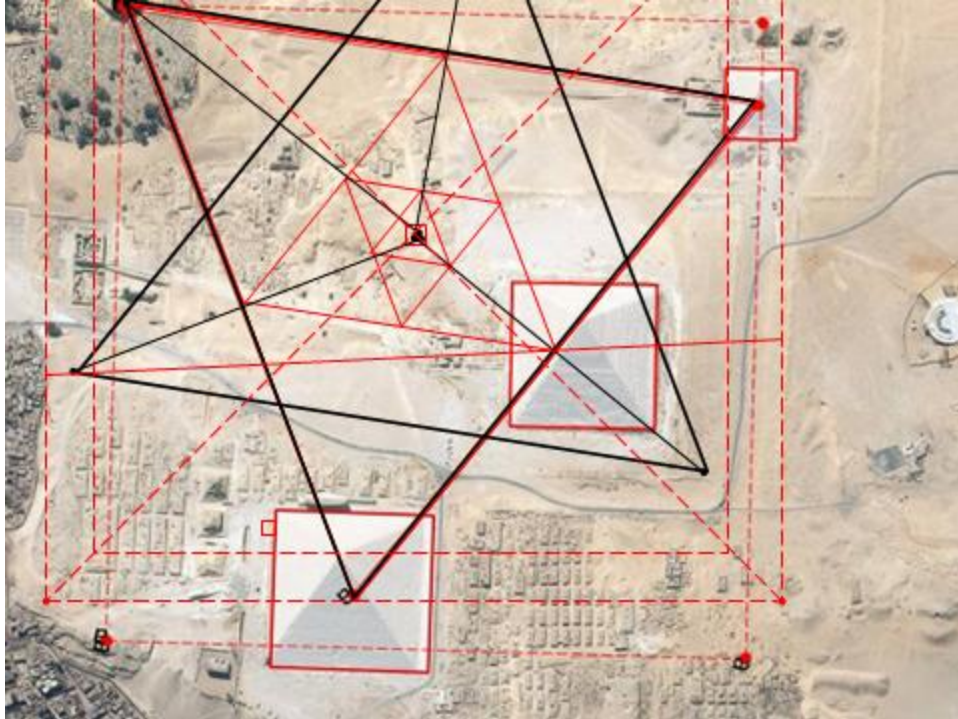


Is the red circled temple shown above the same as the stone area circled as shown left?

'Temple Location' area is defined by the geometries as shown below....

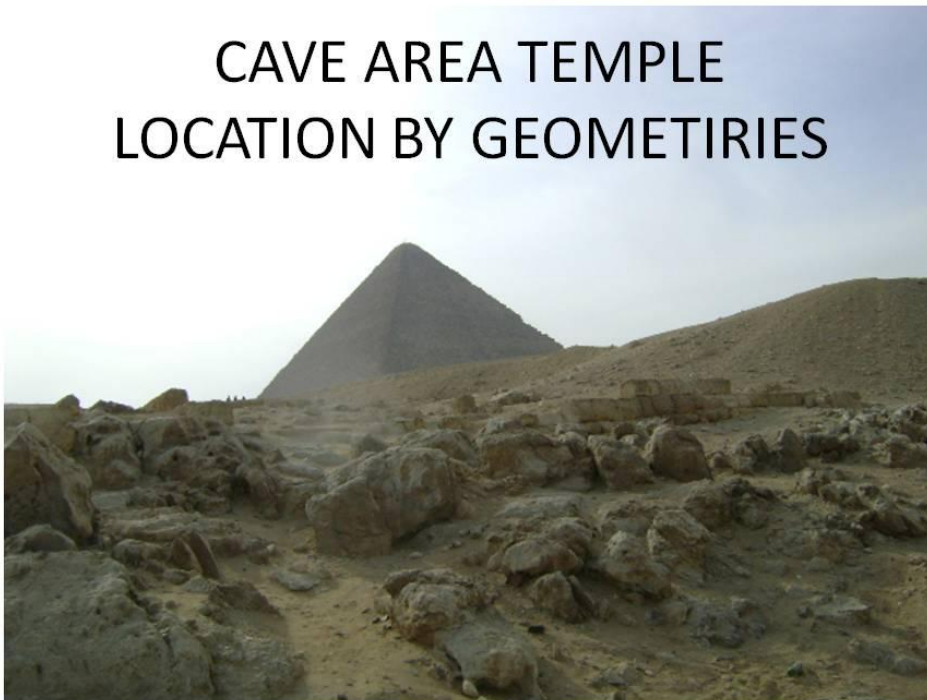
Geometric Design Point Area
 The 'Temple' of the Eastern Mastaba Field
 of the Great Pyramid, Giza Plateau, Egypt

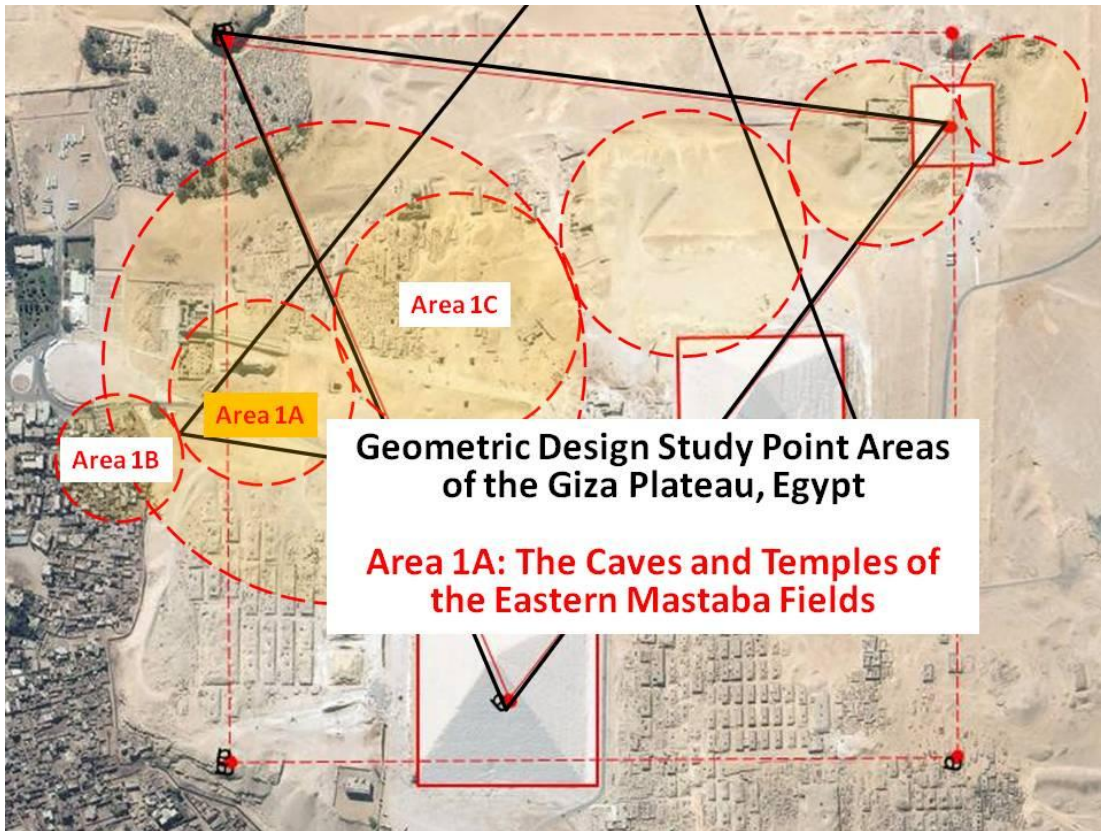




Overhead Look at the Temple area

CAVE AREA TEMPLE
LOCATION BY GEOMETIRIES





**CAVE AREA TEMPLES
AND FOUNDATIONS**



**The Study Area Defined by existing
underground caves below the Stone Temple as
shown below**

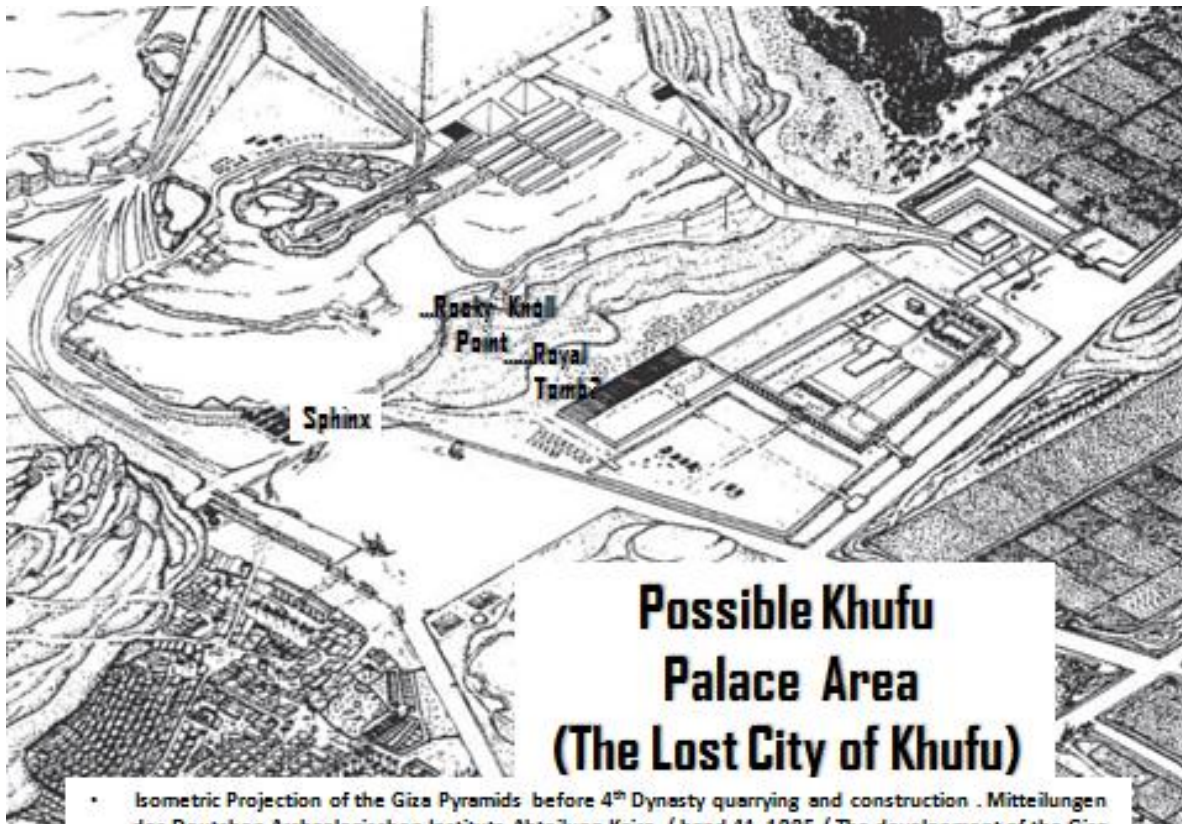




Ongoing excavation type cleanup is currently underway at the Giza Plateau. A major effort to create a more beautiful appearance at the entrance way to the pyramids may be the simple reason for new work in this area.



The current Study Area is now under investigation and should provide more information in the near future.



• Isometric Projection of the Giza Pyramids before 4th Dynasty quarrying and construction . Mitteilungen des Deutschen Archäologischen Instituts Abteilung Kairo / band 41, 1985 / The development of the Giza Necropolis The Khufu Project / by Mark Lehner Page 113

It is well known today... that there is little 'archaeological' evidence from Giza to prove the existence of either the Palace or the Temple of the Pharaoh Khufu 'The Beloved'associated with the Great Pyramid of Giza

